

Catalog #: 52340

Aliases

Ferroportin 1; Ferroportin-1; FPN1; HFE4; IREG1; Iron regulated transporter 1; Iron-regulated transporter 1; MTP1; S40A1_HUMAN; SLC40A1; Solute carrier family 40 member 1; MST079; MSTP079; MTP1; SLC11A3

Background

Gene Name: SLC40A1

NCBI Gene Entry: [30061](#)

UniProt Entry: [Q9NP59](#)

Application Information

Molecular Weight: Predicted, 63 kDa; observed, 60 kDa

Clonality: Rabbit polyclonal antibody

Species Reactivity: Human

Applications Tested: Western blotting (WB)

Immunogen

A synthesized peptide derived from human SLC40A1

Isotype

Rabbit IgG

Storage Buffer

Supplied in PBS (pH 7.4) containing 50% glycerol, and 0.02% sodium azide.

Storage

Store at -20 °C for one year.

Recommended Dilutions

Western Blotting (WB): 1:500-1:2,000

Note: This product is for research use only.

Validation Data

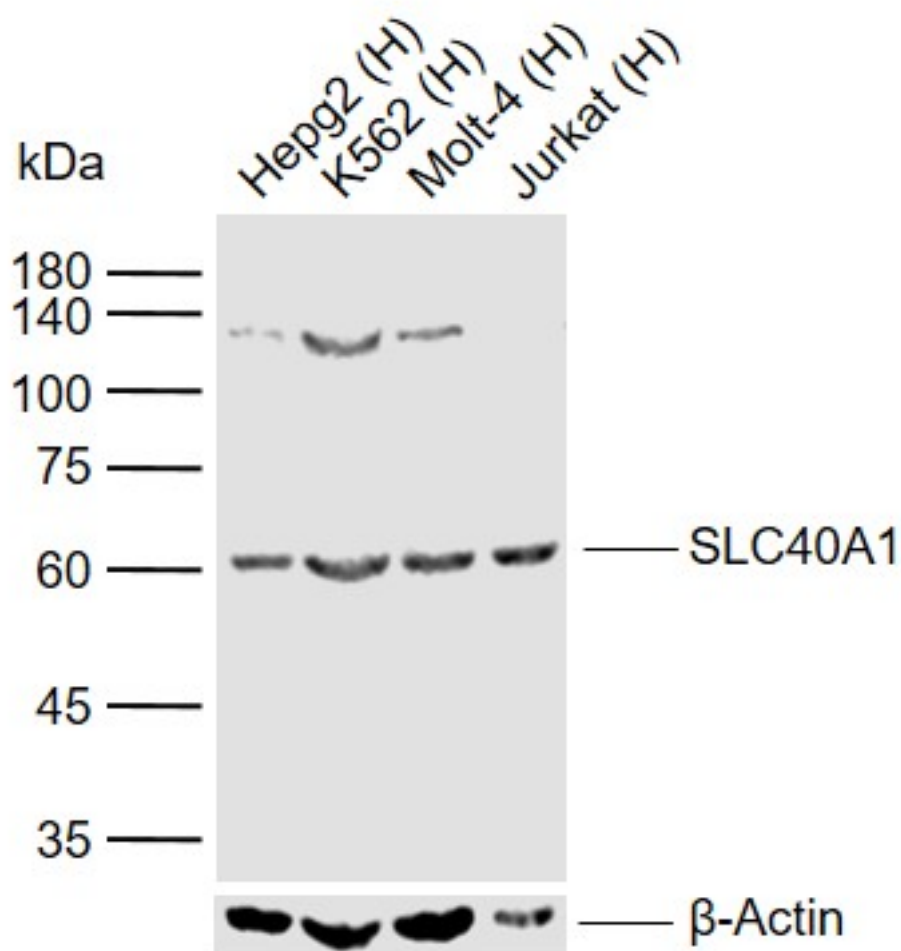
SUPPORT

SUPPORT@GENUINBIOTECH.COM
TEL: +1-540-855-7041

ORDERS

SALES@GENUINBIOTECH.COM
FAX: +1-540-855-7041

WWW.GENUINBIOTECH.COM



Western blotting analysis using anti-SLC40A1 antibody (Cat#52340). Total cell lysates (30 µg) from various cell lines were loaded and separated by SDS-PAGE. The blot was incubated with anti-SLC40A1 antibody (Cat#52340, 1:1,000) and IRDye800CW-conjugated goat anti-rabbit secondary antibody (1:20,000) respectively.