

Catalog #: 52347

Aliases

YTHDF1; YTH N6-Methyladenosine RNABinding Protein F1; C20orf21; Dermatomyositis Associated With Cancer Putative Autoantigen 1; YTH N(6)-Methyladenosine RNA Binding Protein 1; YTH N6-Methyladenosine RNA Binding Protein 1; YTH Domain-Containing Family Protein 1; YTH Domain Family, Member 1; YTH Domain Family 1; FLJ20391; DACA-1; DF1; YTH Domain Family Protein 1

Background

Gene Name: YTHDF1

NCBI Gene Entry: [54915](#)

UniProt Entry: [Q9BYJ9](#)

Application Information

Molecular Weight: Predicted, 61 kDa; observed, 70 kDa

Clonality: Rabbit monoclonal antibody

Clone ID: 24GB15765

Species Reactivity: Human, mouse, rat

Applications Tested: Western blotting (WB), immunohistochemistry (IHC)

Isotype

Rabbit IgG,Kappa

Storage Buffer

Supplied in PBS containing 50% glycerol, 0.05% BSA and 0.05% Proclin 300.

Storage

Store at -20 °C for one year.

Recommended Dilutions

Western Blotting (WB): 1:1,000-1:5,000

Immunohistochemistry (IHC): 1:200-1:1,000

Note: This product is for research use only.

Validation Data

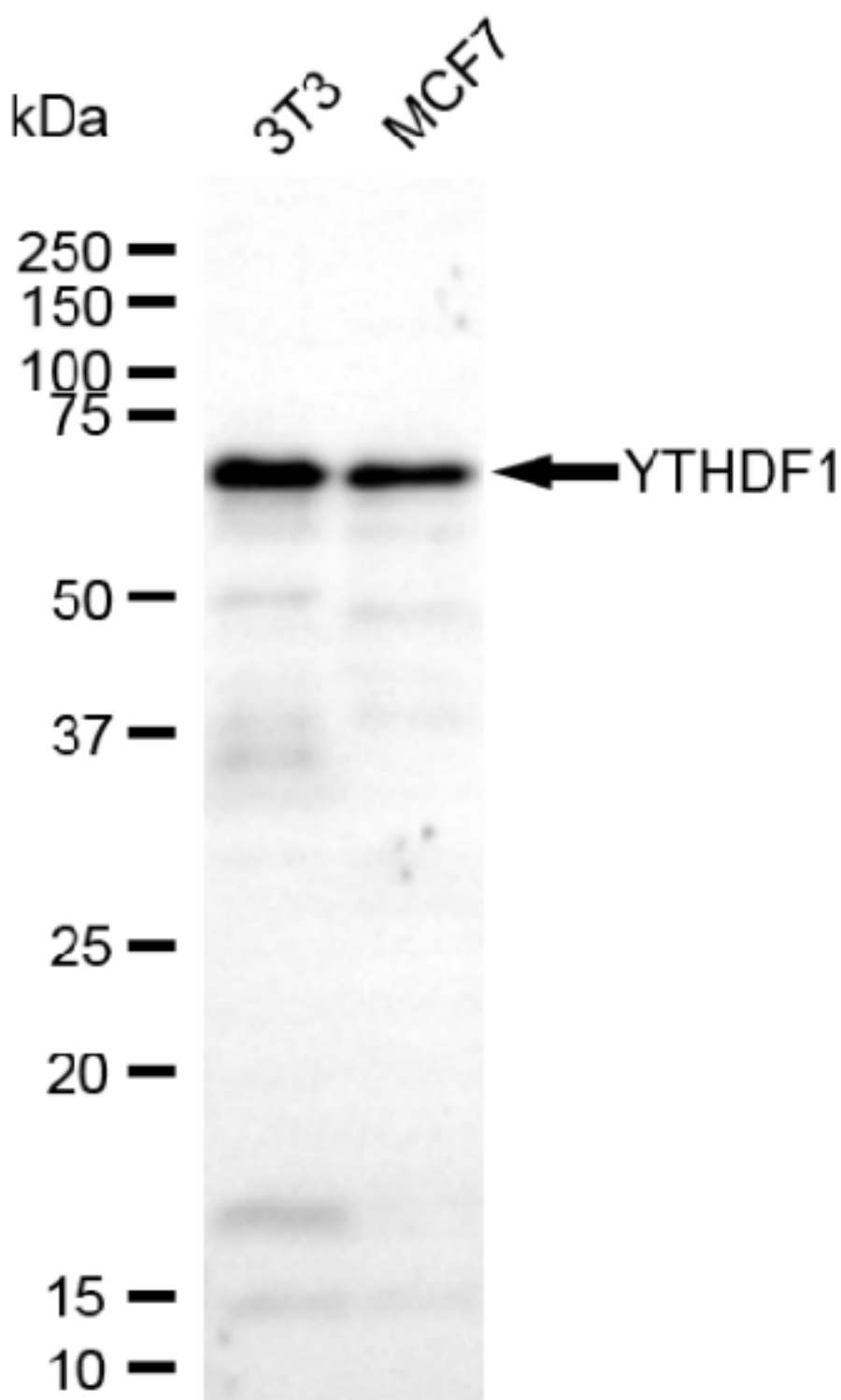
SUPPORT

SUPPORT@GENUINBIOTECH.COM
TEL: +1-540-855-7041

ORDERS

SALES@GENUINBIOTECH.COM
FAX: +1-540-855-7041

WWW.GENUINBIOTECH.COM



Copyright ©2025 Genuin Biotechnologies LLC

Western blotting analysis using anti-YTHDF1 antibody (Cat#52347). Total lysates (30 µg) were loaded and separated by SDS-PAGE. The blot was incubated with anti-YTHDF1 antibody (Cat#52347, 1:2,500) and HRP-conjugated goat anti-rabbit secondary antibody (Cat#201, 1:20,000) respectively. Image was developed using FeQ™ ECL Substrate Kit (Cat#226).

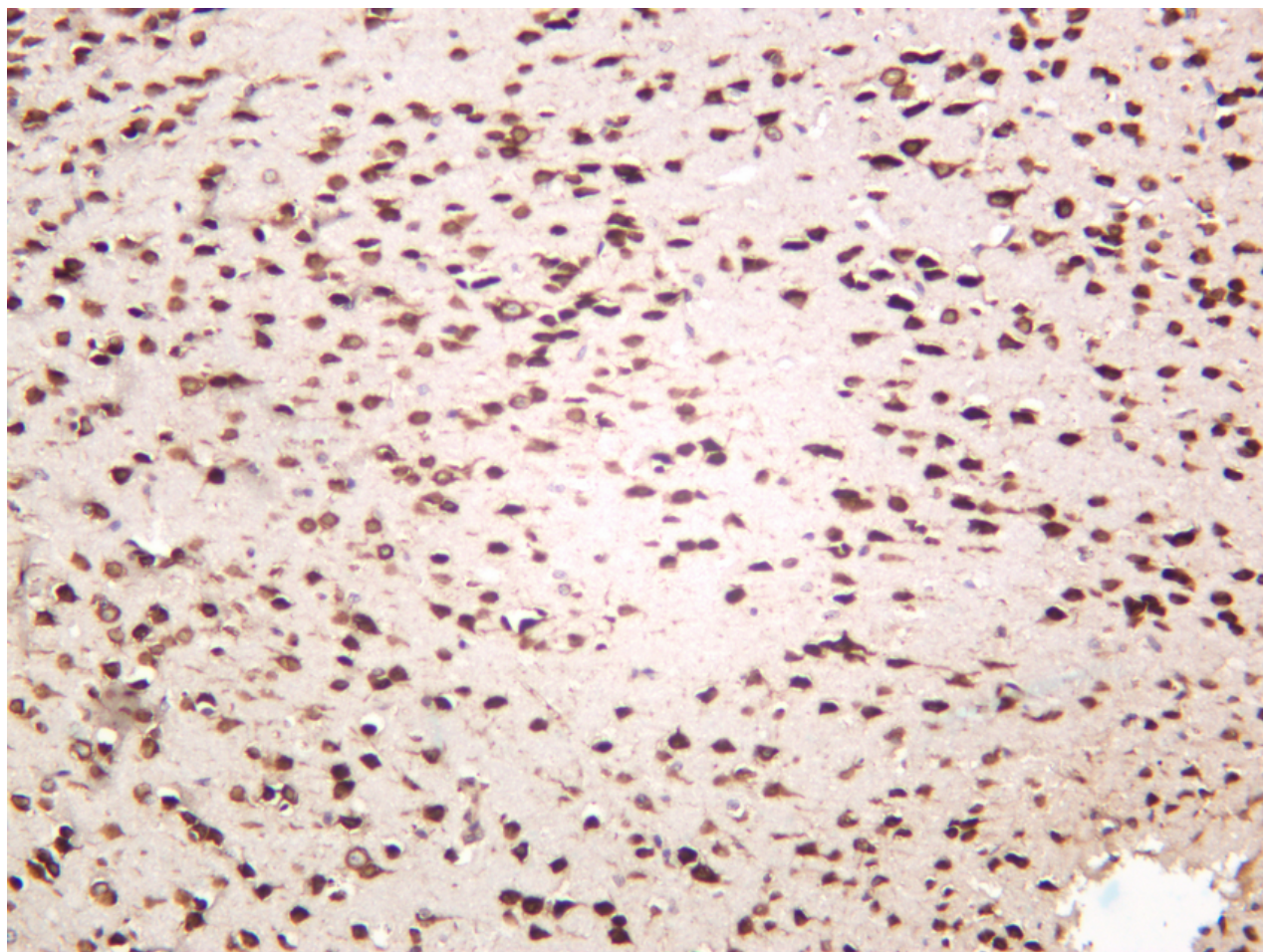
SUPPORT

SUPPORT@GENUINBIOTECH.COM
TEL: +1-540-855-7041

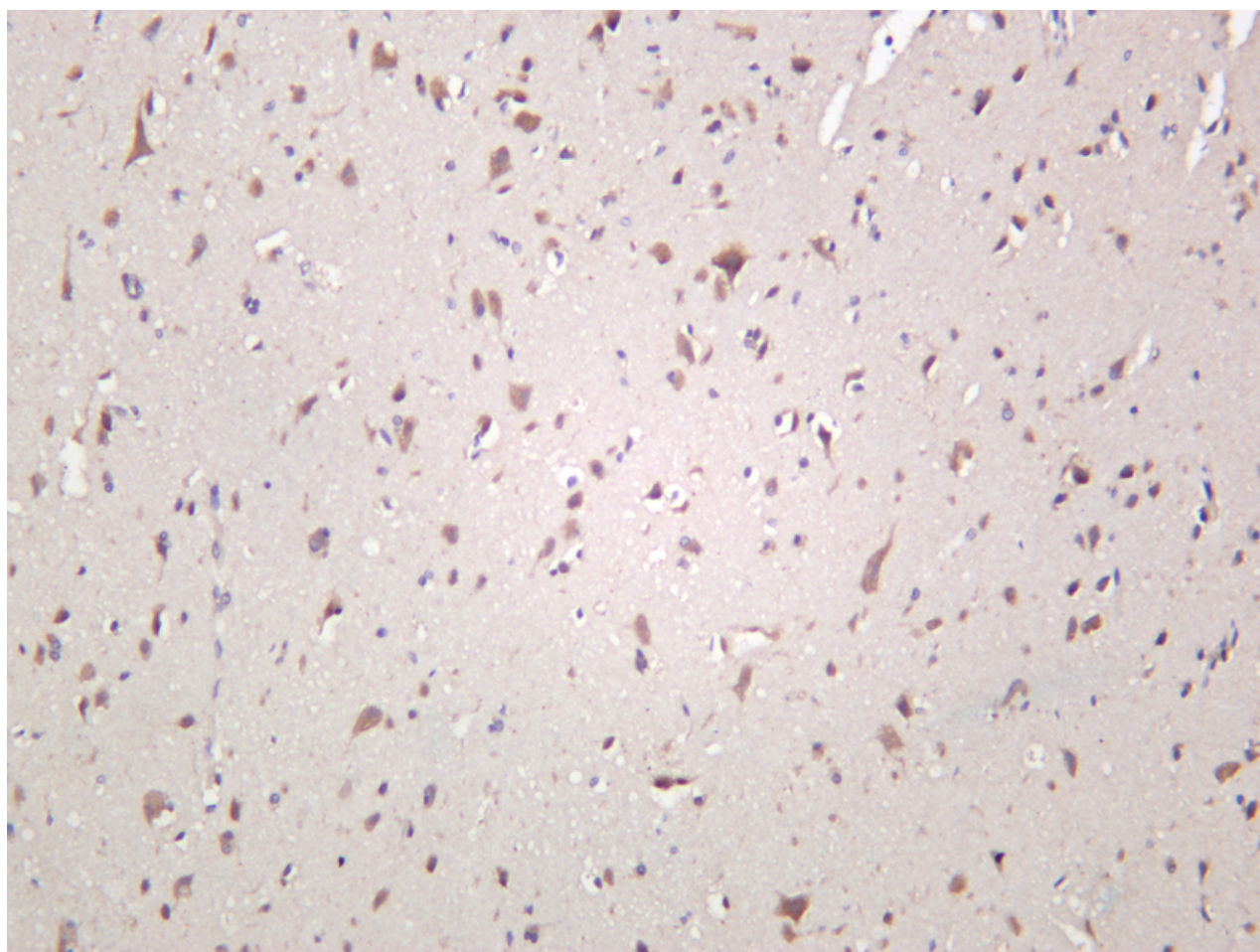
ORDERS

SALES@GENUINBIOTECH.COM
FAX: +1-540-855-7041

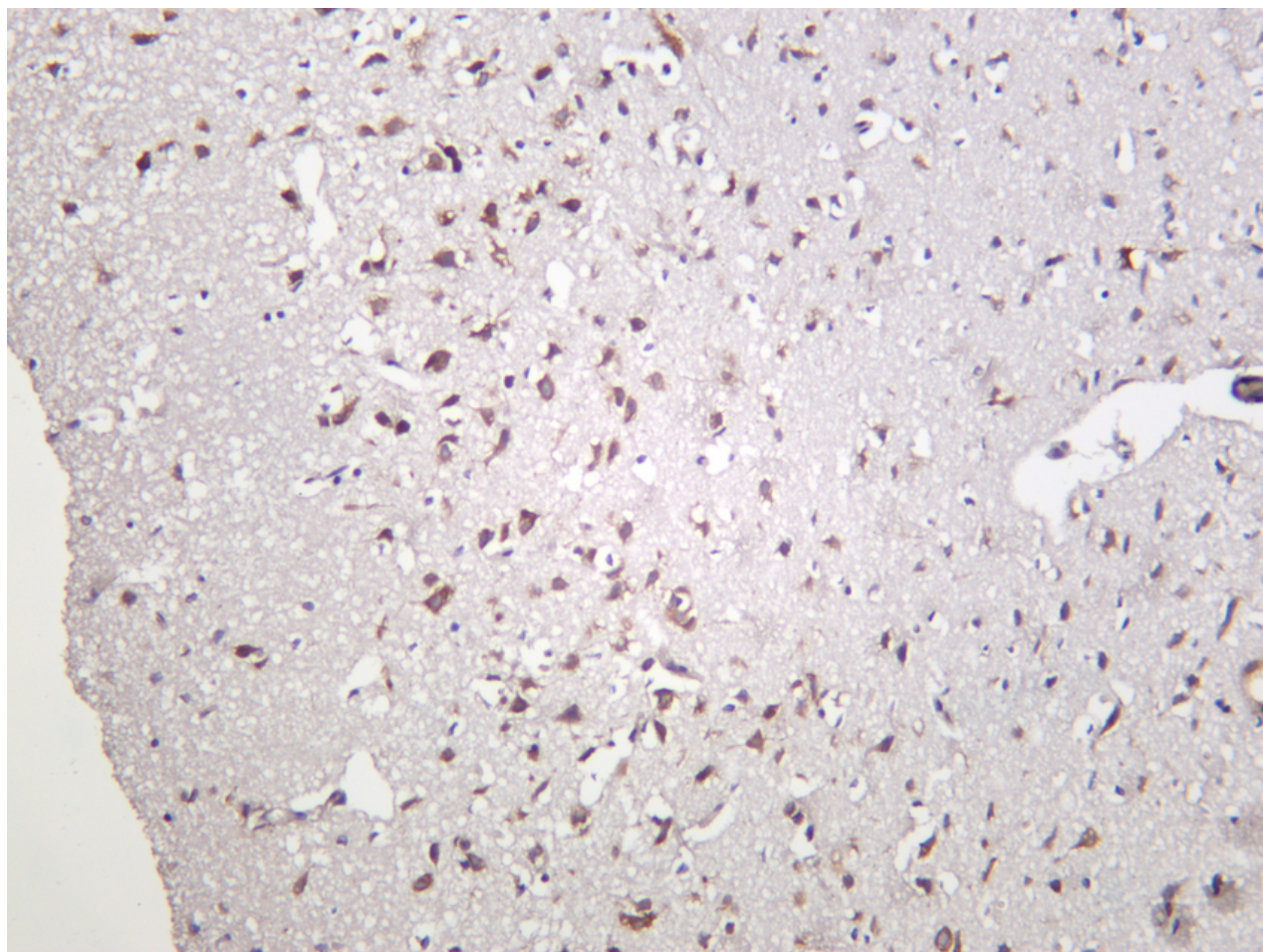
WWW.GENUINBIOTECH.COM



Mouse brain was stained with anti-YTHDF1 antibody



Human brain was stained with anti-YTHDF1 antibody



Rat brain was stained with anti-YTHDF1 antibody