

## Catalog #: 5235

## Aliases

SMPD2; Sphingomyelin Phosphodiesterase 2; NSMase; Neutral Sphingomyelinase; ISC1; Lyso-Platelet-Activating Factor-Phospholipase C; Lyso-PAF-PLC; N-SMase; Sphingomyelin Phosphodiesterase 2, Neutral Membrane (Neutral Sphingomyelinase); EC 3.1.4.12; NSMASE1; NSMase1

## Background

Gene Name: SMPD2

NCBI Gene Entry: [6610](#)

UniProt Entry: [O60906](#)

## Application Information

Molecular Weight: Predicted, 48 kDa; observed, 49 kDa

Clonality: Rabbit monoclonal antibody

Clone ID: 25GB285

Species Reactivity: Human, mouse, rat

Applications Tested: Western blotting (WB), flow cytometry (FCM)

## Immunogen

A synthesized peptide derived from human SMPD2

## Isotype

Rabbit IgG

## Storage Buffer

Supplied in PBS (pH 7.4) containing 50% glycerol, and 0.02% sodium azide.

## Storage

Store at -20 °C for one year.

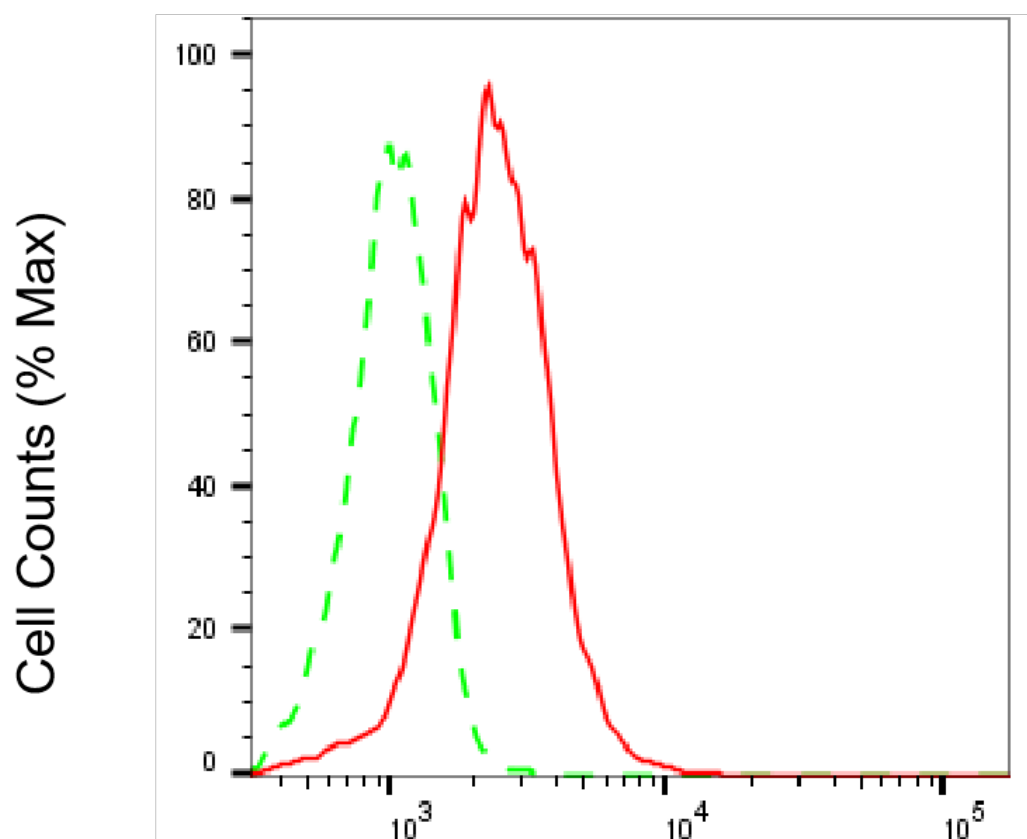
## Recommended Dilutions

Western Blotting (WB): 1:1,000-1:5,000

Flow Cytometry (FCM): 1:1,000

**Note:** This product is for research use only.

## Validation Data



Copyright ©2025 Genuin Biotechnologies LLC

## SMPD2-Alexa Fluor® 647

Flow cytometric analysis of SMPD2 expression in C2C12 cells using anti-SMPD2 antibody (Cat#5235, 1:2,000). Green, isotype control; red, SMPD2.

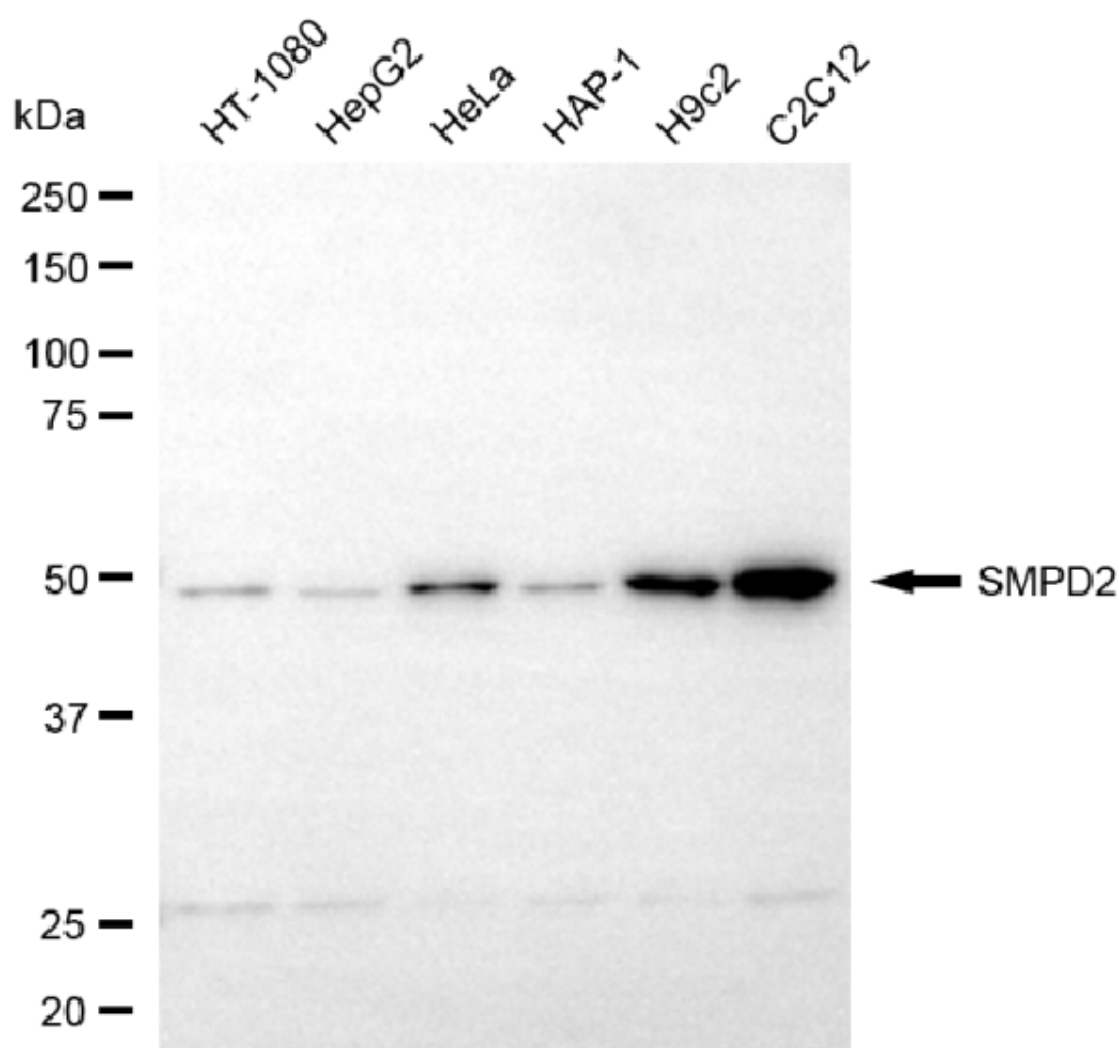
## SUPPORT

SUPPORT@GENUINBIOTECH.COM  
TEL: +1-540-855-7041

## ORDERS

SALES@GENUINBIOTECH.COM  
FAX: +1-540-855-7041

WWW.GENUINBIOTECH.COM



Copyright ©2025 Genuin Biotechnologies LLC

Western blotting analysis using anti-SMPD2 antibody (Cat#5235). Total cell lysates (30  $\mu$ g) from various cell lines were loaded and separated by SDS-PAGE. The blot was incubated with anti-SMPD2 antibody (Cat#5235, 1:5,000) and HRP-conjugated goat anti-rabbit secondary antibody (Cat#201, 1:20,000) respectively. Image was developed using FeQ™ ECL Substrate Kit (Cat#226).

**SUPPORT**

SUPPORT@GENUINBIOTECH.COM  
TEL: +1-540-855-7041

**ORDERS**

SALES@GENUINBIOTECH.COM  
FAX: +1-540-855-7041

**WWW.GENUINBIOTECH.COM**