

Catalog #: 52350

Aliases

DELE1; DAP3 Binding Cell Death Enhancer 1; KIAA0141; DELE; Death Ligand Signal Enhancer; DAP3-Binding Cell Death Enhancer 1, Long Form; DELE1(L); DAP3-Binding Cell Death Enhancer 1

Background

Gene Name: DELE1

NCBI Gene Entry: [9812](#)

UniProt Entry: [Q14154](#)

Application Information

Molecular Weight: Predicted, 56 kDa; observed, 57 kDa

Clonality: Rabbit polyclonal antibody

Species Reactivity: Human

Applications Tested: Western blotting (WB), immunocytochemistry (IC)

Immunogen

A synthesized peptide derived from human DELE1

Isotype

Rabbit IgG

Storage Buffer

Supplied in PBS containing 50% glycerol, 0.5% BSA and 0.02% sodium azide.

Storage

Store at -20 °C for one year.

Recommended Dilutions

Western Blotting (WB): 1:400-1:2,000

Immunocytochemistry (IC): 1:100-1:1,000

Note: This product is for research use only.

Validation Data

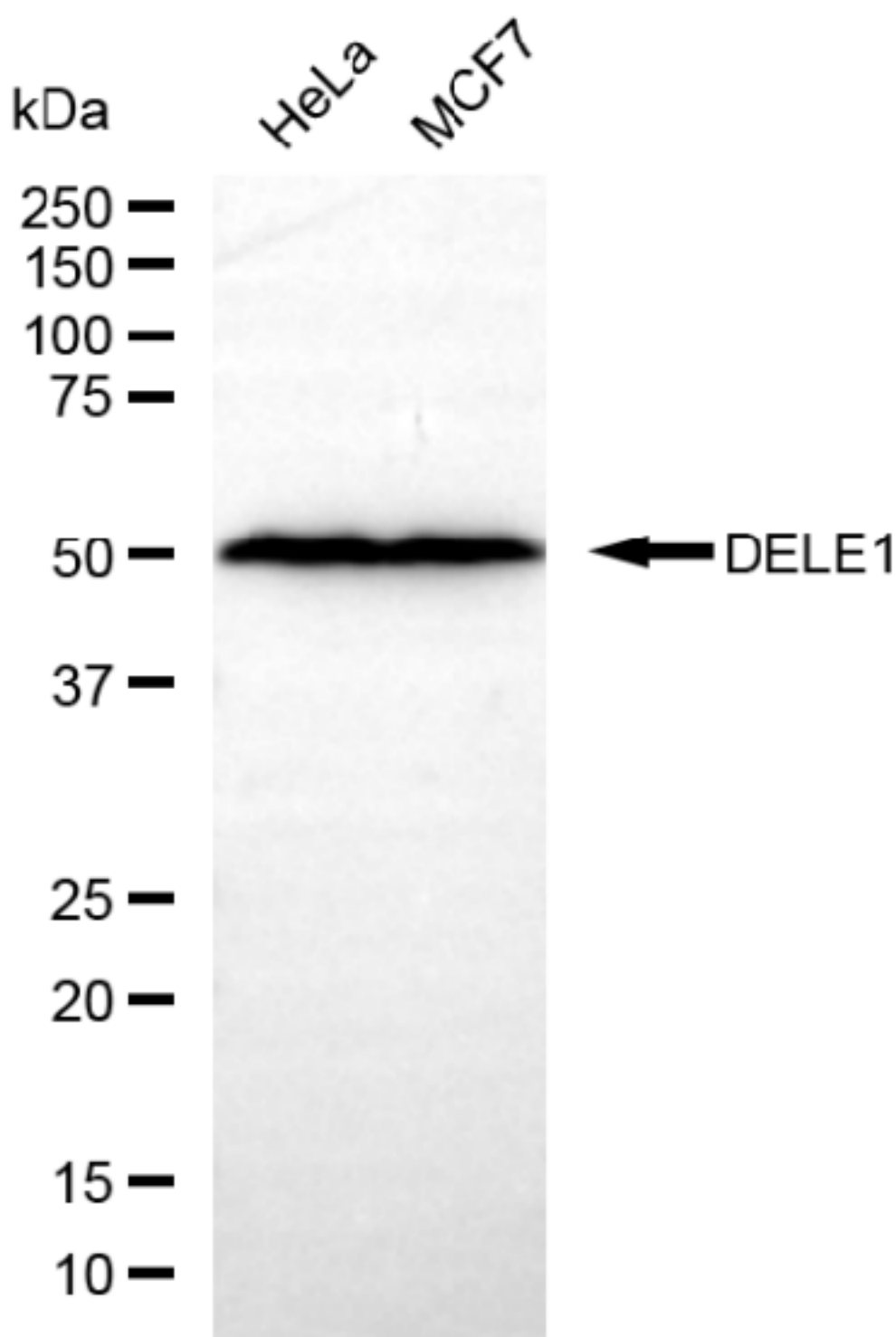
SUPPORT

SUPPORT@GENUINBIOTECH.COM
TEL: +1-540-855-7041

ORDERS

SALES@GENUINBIOTECH.COM
FAX: +1-540-855-7041

WWW.GENUINBIOTECH.COM



Copyright ©2025 Genuin Biotechnologies LLC

Western blotting analysis using anti-DELE1 antibody (Cat#52350). Total lysates (30 μ g) were loaded and separated by SDS-PAGE. The blot was incubated with anti-DELE1 antibody (Cat#52350, 1:2,500) and HRP-conjugated goat anti-rabbit secondary antibody (Cat#201, 1:20,000) respectively. Image was developed using FeQ™ ECL Substrate Kit (Cat#226).

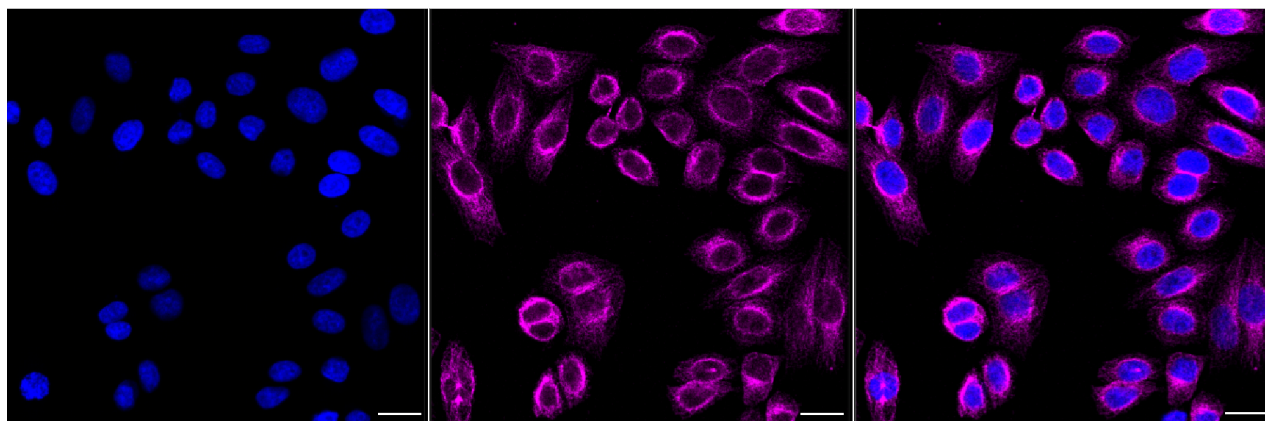
SUPPORT

SUPPORT@GENUINBIOTECH.COM
TEL: +1-540-855-7041

ORDERS

SALES@GENUINBIOTECH.COM
FAX: +1-540-855-7041

WWW.GENUINBIOTECH.COM



Immunocytochemical staining of HepG2 cells with anti-DELE1 antibody (Cat#52350, 1:1,000). Nuclei were stained blue with DAPI; DELE1 was stained magenta with Alexa Fluor® 647. Images were taken using Leica stellaris 5. Protein abundance based on laser Intensity and smart gain: Medium. Scale bar, 20 μ m.