

Catalog #: 52359

Aliases

S100A14; S100 Calcium Binding Protein A14; S100A15; BCMP84; Protein S100-A14; S114; Breast Cancer Membrane Protein 84; S100 Calcium-Binding Protein A14

Background

Gene Name: S100A14

NCBI Gene Entry: [57402](#)

UniProt Entry: [Q9HCY8](#)

Application Information

Molecular Weight: Predicted, 12 kDa; observed, 11 kDa

Clonality: Rabbit polyclonal antibody

Species Reactivity: Human, mouse

Applications Tested: Western blotting (WB)

Immunogen

A synthesized peptide derived from human S100A14

Isotype

Rabbit IgG

Storage Buffer

Supplied in PBS containing 50% glycerol, and 0.02% sodium azide.

Storage

Store at -20 °C for one year.

Recommended Dilutions

Western Blotting (WB): 1:500-1:2,000

Note: This product is for research use only.

Validation Data

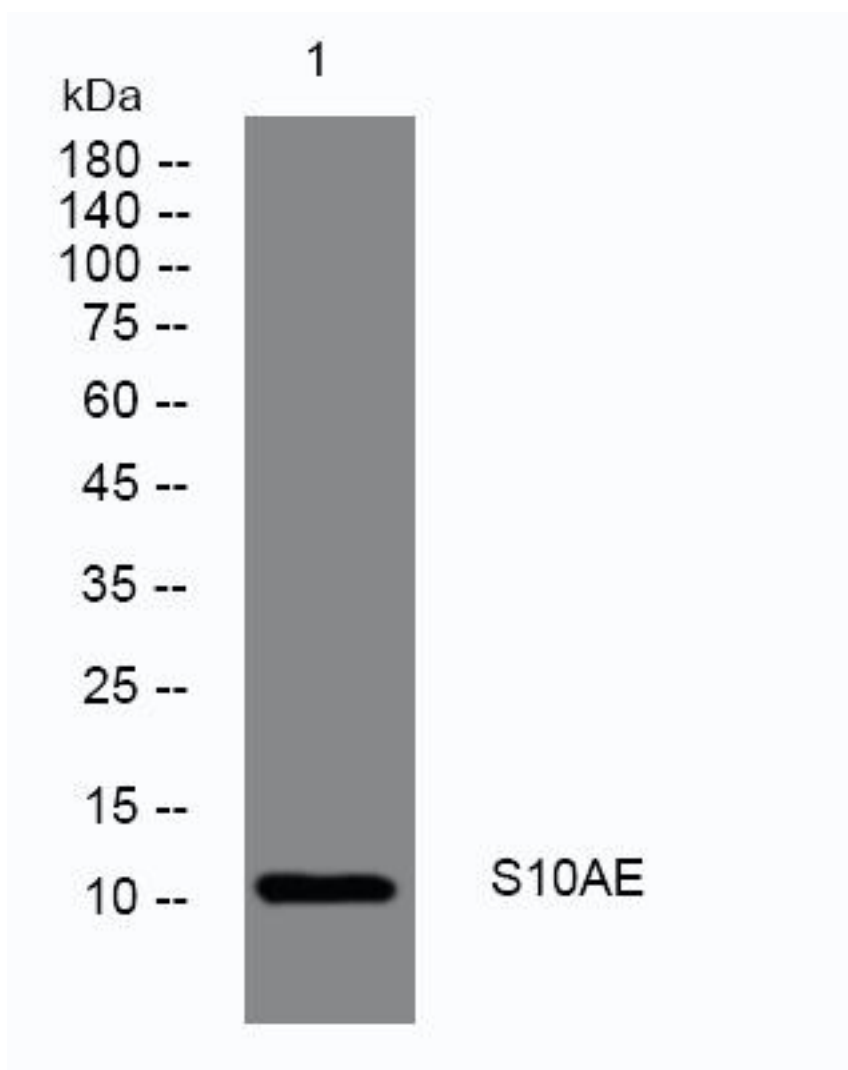
SUPPORT

SUPPORT@GENUINBIOTECH.COM
TEL: +1-540-855-7041

ORDERS

SALES@GENUINBIOTECH.COM
FAX: +1-540-855-7041

WWW.GENUINBIOTECH.COM



Western blotting analysis of lysates from DU145 cells. The blot was incubated with anti-S100A14 antibody (Cat#52359, 1:2,000), 4°C over night.