

Catalog #: 5237

Aliases

PPIC; Peptidylprolyl Isomerase C; CYPC; Cyclophilin C; Peptidyl-Prolyl Cis-Trans Isomerase C; Rotamase C; EC 5.2.1.8; PPIase C; Parvulin

Background

Gene Name: PPIC

NCBI Gene Entry: [5480](#)

UniProt Entry: [P45877](#)

Application Information

Molecular Weight: Predicted, 23 kDa; observed, 23 kDa

Clonality: Rabbit monoclonal antibody

Clone ID: 25GB295

Species Reactivity: Human

Applications Tested: Western blotting (WB), flow cytometry (FCM)

Immunogen

A synthesized peptide derived from human PPIC

Isotype

Rabbit IgG

Storage Buffer

Supplied in PBS (pH 7.4) containing 50% glycerol, and 0.02% sodium azide.

Storage

Store at -20 °C for one year.

Recommended Dilutions

Western Blotting (WB): 1:1,000-1:5,000

Flow Cytometry (FCM): 1:1,000

Note: This product is for research use only.

Validation Data

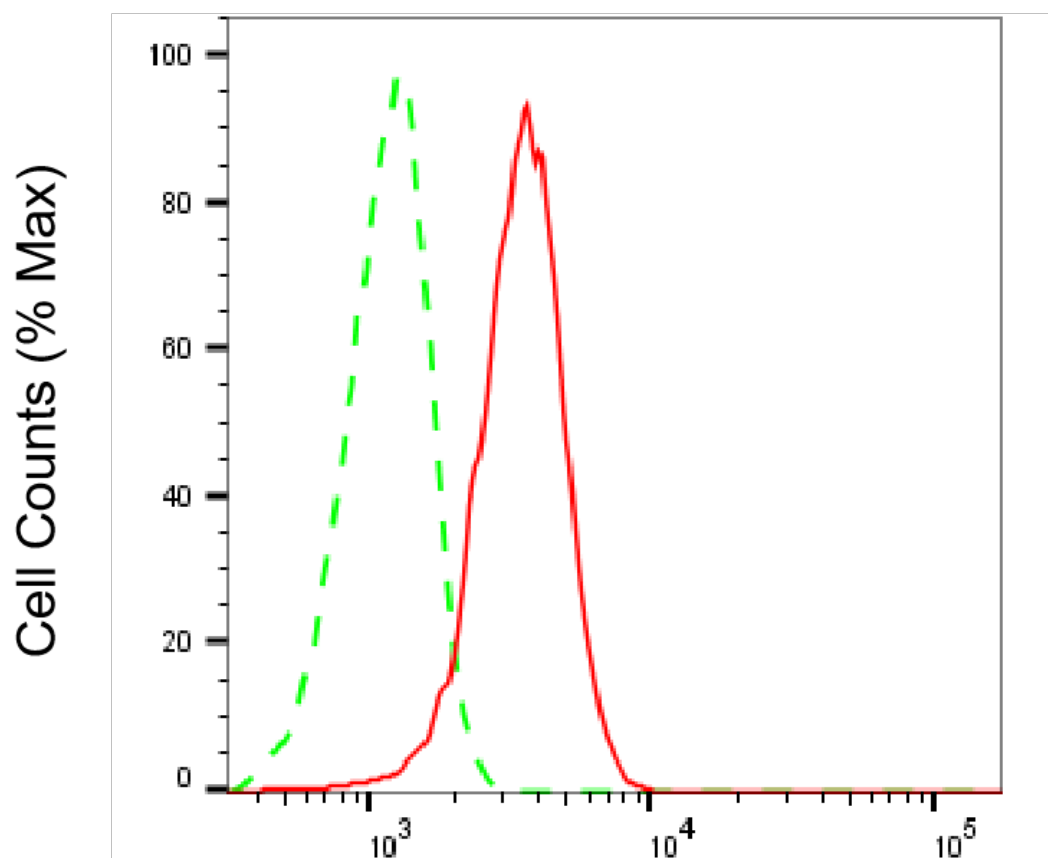
SUPPORT

SUPPORT@GENUINBIOTECH.COM
TEL: +1-540-855-7041

ORDERS

SALES@GENUINBIOTECH.COM
FAX: +1-540-855-7041

WWW.GENUINBIOTECH.COM



Copyright ©2025 Genuin Biotechnologies LLC

Peptidylprolyl isomerase C-Alexa Fluor® 647

Flow cytometric analysis of Peptidylprolyl isomerase C expression in HepG2 cells using anti-Peptidylprolyl isomerase C antibody (Cat#5237, 1:2,000). Green, isotype control; red, Peptidylprolyl isomerase C.

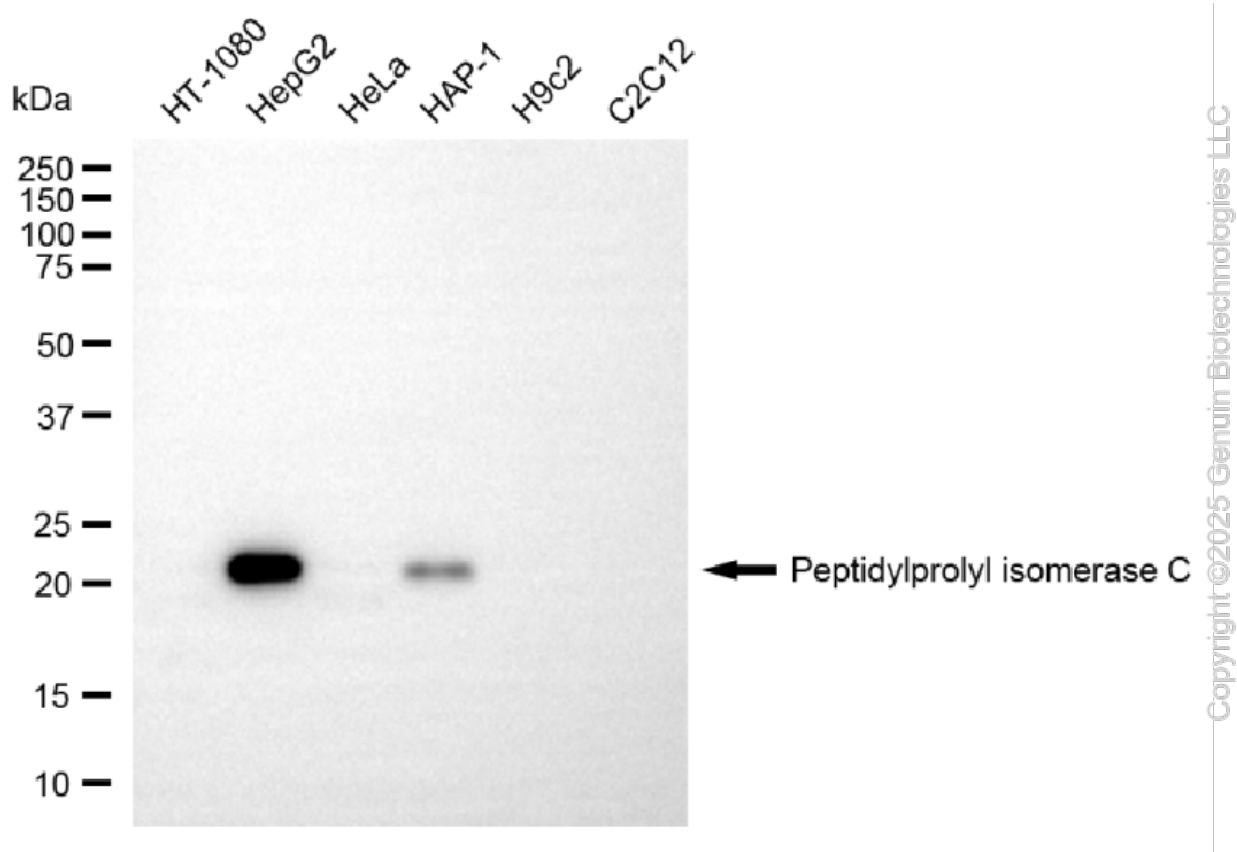
SUPPORT

SUPPORT@GENUINBIOTECH.COM
TEL: +1-540-855-7041

ORDERS

SALES@GENUINBIOTECH.COM
FAX: +1-540-855-7041

WWW.GENUINBIOTECH.COM



Western blotting analysis using anti-peptidylprolyl isomerase C antibody (Cat#5237). Total cell lysates (30 μ g) from various cell lines were loaded and separated by SDS-PAGE. The blot was incubated with anti-peptidylprolyl isomerase C antibody (Cat#5237, 1:5,000) and HRP-conjugated goat anti-rabbit secondary antibody (Cat#201, 1:20,000) respectively. Image was developed using NaQ™ ECL Substrate Kit (Cat#716).

SUPPORT

SUPPORT@GENUINBIOTECH.COM
TEL: +1-540-855-7041

ORDERS

SALES@GENUINBIOTECH.COM
FAX: +1-540-855-7041

WWW.GENUINBIOTECH.COM