

## Catalog #: 52375

### Aliases

SLC2A1; Solute Carrier Family 2 Member 1; GLUT-1; DYT18; GLUT1; DYT9; Choreoathetosis/Spasticity, Episodic (Paroxysmal Choreoathetosis/Spasticity); Solute Carrier Family 2 (Facilitated Glucose Transporter), Member 1; Solute Carrier Family 2, Facilitated Glucose Transporter Member 1; Human T-Cell Leukemia Virus (I And II) Receptor; Glucose Transporter Type 1, Erythrocyte/Brain; HepG2 Glucose Transporter; Dystonia Gene 18; Dystonia Gene 9; HTLV-1; GLUT; CSE; Receptor For HTLV-1 And HTLV-2; GLUT1DS; SDCHCN; DYT17; EIG12; PED

### Background

Gene Name: SLC2A1

NCBI Gene Entry: [6513](#)

UniProt Entry: [P11166](#)

### Application Information

Molecular Weight: Predicted, 54 kDa; observed, 55 kDa

Clonality: Rabbit polyclonal antibody

Species Reactivity: Human, mouse, rat

Applications Tested: Western blotting (WB), immunohistochemistry (IHC), immunocytochemistry (IC)

### Immunogen

A synthesized peptide derived from human GLUT1

### Isotype

Rabbit IgG

### Storage Buffer

Supplied in PBS containing 50% glycerol, 0.5% BSA and 0.02% sodium azide.

### Storage

Store at -20 °C for one year.

### Recommended Dilutions

Western Blotting (WB): 1:500-1:2,500

Immunohistochemistry (IHC): 1:100-300

Immunocytochemistry (IC): 1:50-200

---

#### SUPPORT

SUPPORT@GENUINBIOTECH.COM  
TEL: +1-540-855-7041

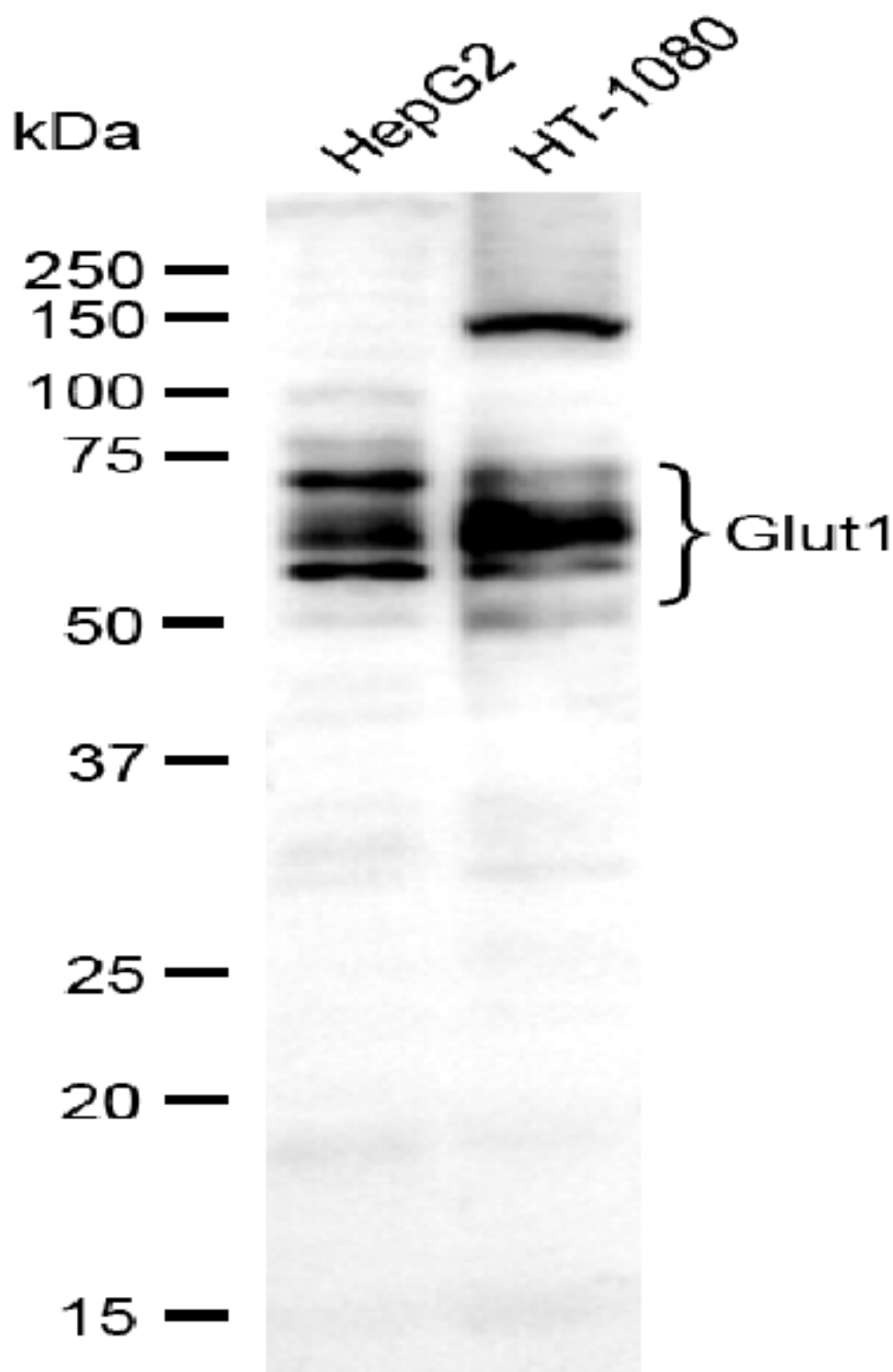
#### ORDERS

SALES@GENUINBIOTECH.COM  
FAX: +1-540-855-7041

[WWW.GENUINBIOTECH.COM](http://WWW.GENUINBIOTECH.COM)

**Note:** This product is for research use only.

## Validation Data



Copyright ©2025 Genuin Biotechnologies LLC

### SUPPORT

SUPPORT@GENUINBIOTECH.COM  
TEL: +1-540-855-7041

### ORDERS

SALES@GENUINBIOTECH.COM  
FAX: +1-540-855-7041

WWW.GENUINBIOTECH.COM

Western blotting analysis using anti-SLC2A1 antibody (Cat#52375). Total lysates (30 µg) were loaded and separated by SDS-PAGE. The blot was incubated with anti-SLC2A1 antibody (Cat#52375, 1:2,500) and HRP-conjugated goat anti-rabbit secondary antibody (Cat#201, 1:20,000) respectively. Image was developed using FeQ™ ECL Substrate Kit (Cat#226).