

Anti-Lactate Dehydrogenase A Rabbit Monoclonal Antibody



Catalog #: 52377

Aliases

LDHA; Lactate Dehydrogenase A; Cell Proliferation-Inducing Gene 19 Protein; Renal Carcinoma Antigen NY-REN-59; L-Lactate Dehydrogenase A Chain; LDH Muscle Subunit; EC 1.1.1.27; LDH-A; LDH-M; Epididymis Secretory Sperm Binding Protein Li 133P; Proliferation-Inducing Gene 19; Lactate Dehydrogenase M; HEL-S-133P; EC 1.1.1; GSD11; PIG19; LDHM

Background

Gene Name: LDHA

NCBI Gene Entry: [3939](#)

UniProt Entry: [P00338](#)

Application Information

Molecular Weight: Predicted, 36 kDa; observed, 36 kDa

Clonality: Rabbit Monoclonal antibody

Clone ID: 24GB16170

Species Reactivity: Human, mouse, rat

Applications Tested: Western blotting (WB), immunohistochemistry (IHC)

Immunogen

The immunogen information is proprietary.

Isotype

Rabbit IgG, Kappa

Storage Buffer

Supplied in PBS containing 50% glycerol, 0.05% BSA and 0.05% Proclin 300.

Storage

Store at -20 °C for one year.

Recommended Dilutions

Western Blotting (WB): 1:500-1:2,000

Immunohistochemistry (IHC): 1:200-1:1,000

Note: This product is for research use only.

SUPPORT

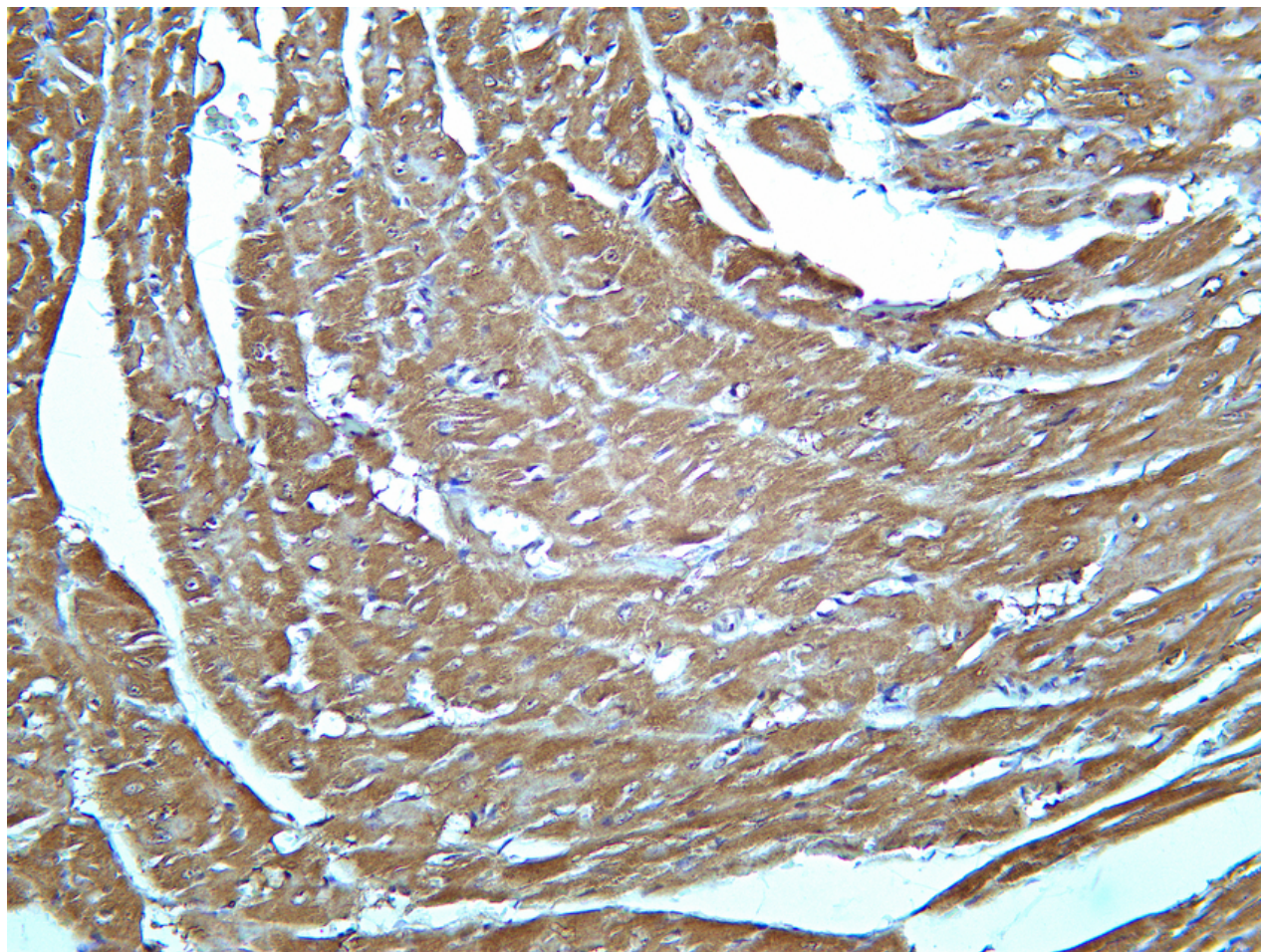
SUPPORT@GENUINBIOTECH.COM
TEL: +1-540-855-7041

ORDERS

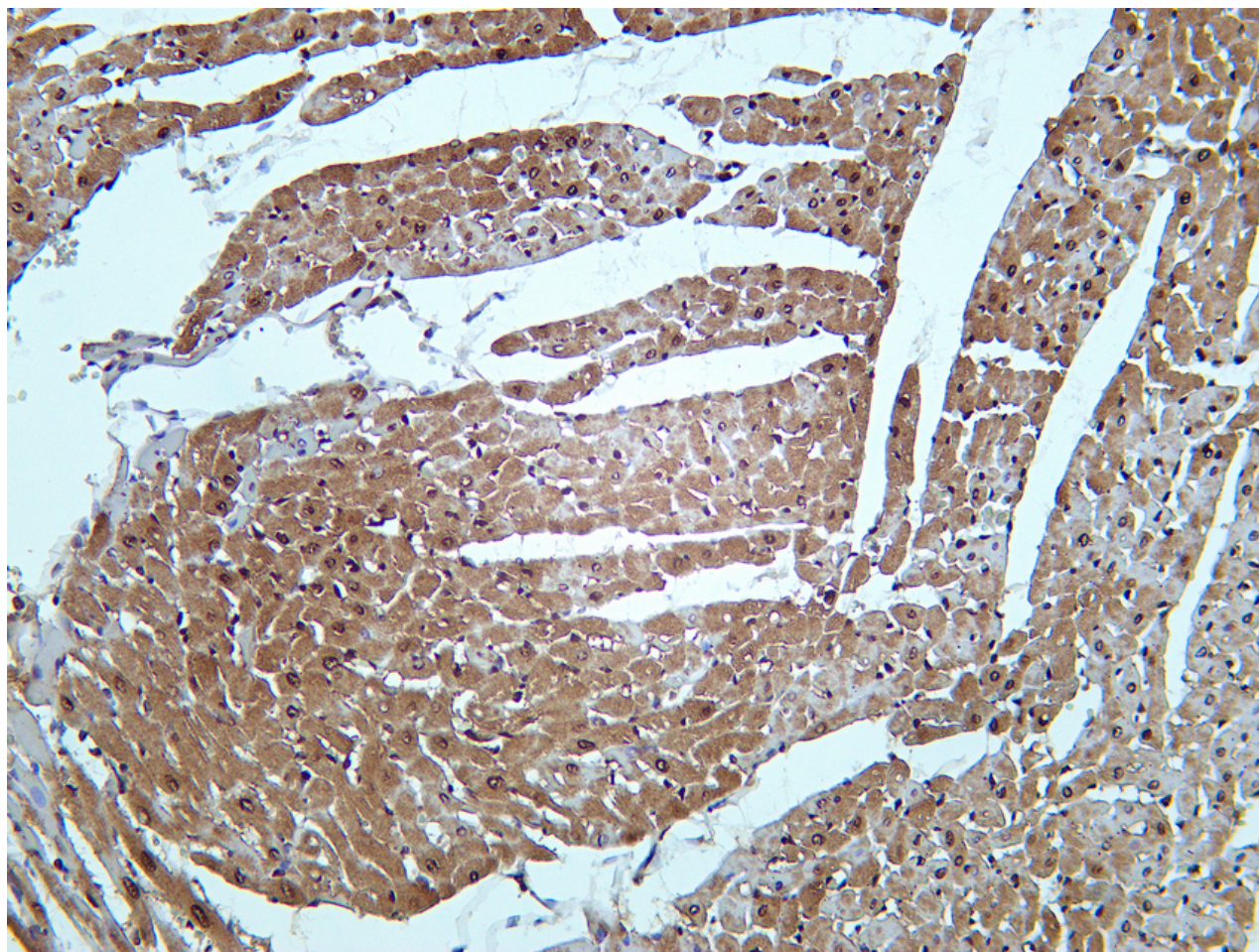
SALES@GENUINBIOTECH.COM
FAX: +1-540-855-7041

WWW.GENUINBIOTECH.COM

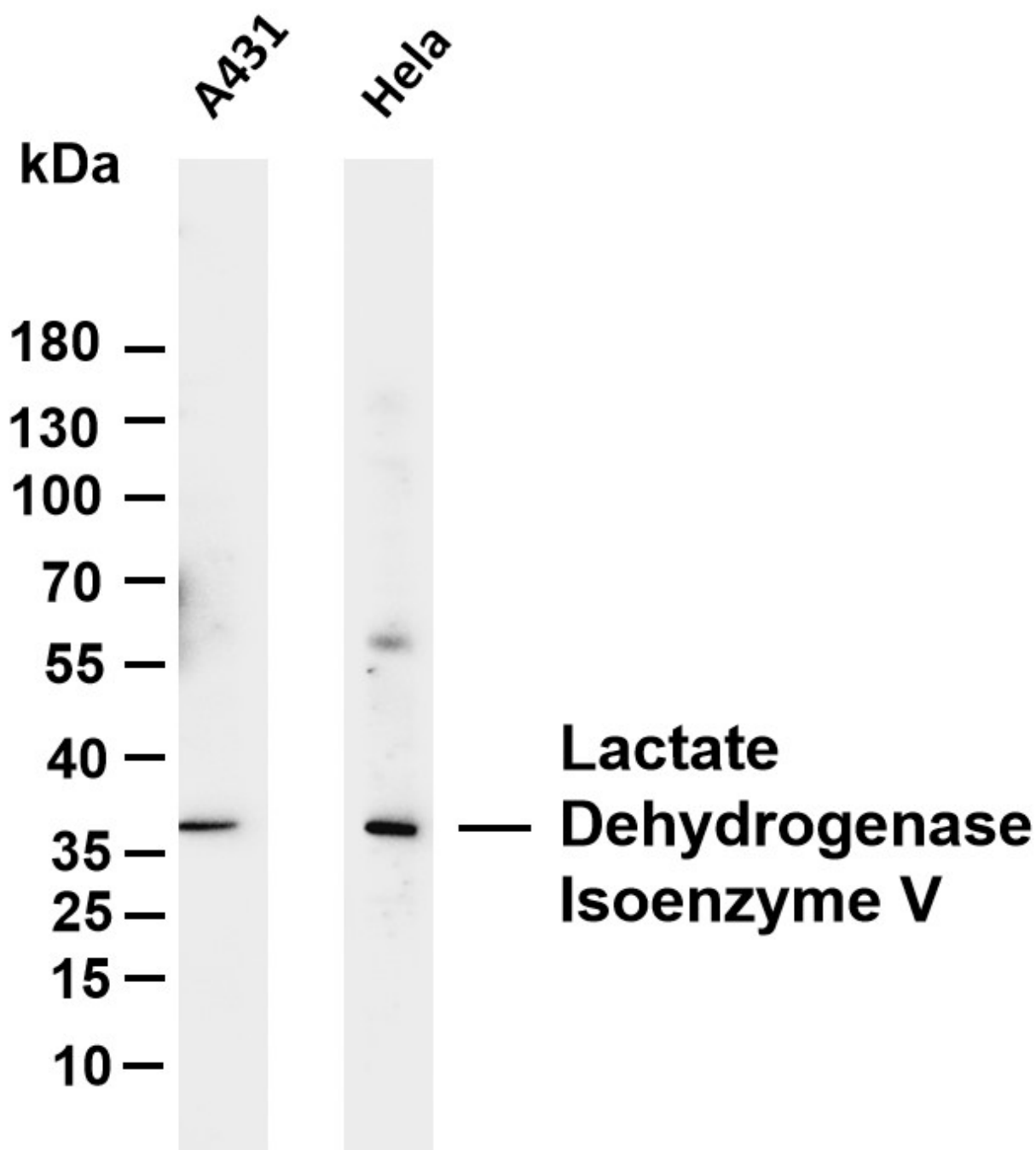
Validation Data



Mouse heart was stained with anti-Lactate Dehydrogenase A antibody.



Rat heart was stained with anti-Lactate Dehydrogenase A antibody.



Western blotting analysis using anti-Lactate Dehydrogenase A antibody (Cat#52377). Total cell lysates from various cell lines were loaded and separated by SDS-PAGE. The blot was incubated with anti-Lactate Dehydrogenase A antibody (Cat#52377, 1:5,000) and HRP-conjugated goat anti-rabbit secondary antibody (Cat#201, 1:20,000) respectively.