

Anti-Semaphorin 4C Rabbit Polyclonal Antibody



Catalog #: 52381

Aliases

SEMA4C; Semaphorin 4C; Semac11; Semaf; SEMAI; Sema Domain, Immunoglobulin Domain (Ig), Transmembrane Domain (TM) And Short Cytoplasmic Domain, (Semaphorin) 4C; Semaphorin-4C; M-Sema F; M-SEMA-F; KIAA1739

Background

Gene Name: SEMA4C

NCBI Gene Entry: [54910](#)

UniProt Entry: [Q9C0C4](#)

Application Information

Molecular Weight: Predicted, 92 kDa; observed, 110 kDa

Clonality: Rabbit polyclonal antibody

Species Reactivity: Human, mouse

Applications Tested: Western blotting (WB)

Immunogen

A synthesized peptide derived from human Semaphorin 4C

Isotype

Rabbit IgG

Storage Buffer

Supplied in 0.42% Potassium phosphate (pH7.3) containing 30% glycerol, 0.5% BSA and 0.02% sodium azide.

Storage

Store at -20 °C for one year.

Recommended Dilutions

Western Blotting (WB): 1:500-1:1,000

Note: This product is for research use only.

Validation Data

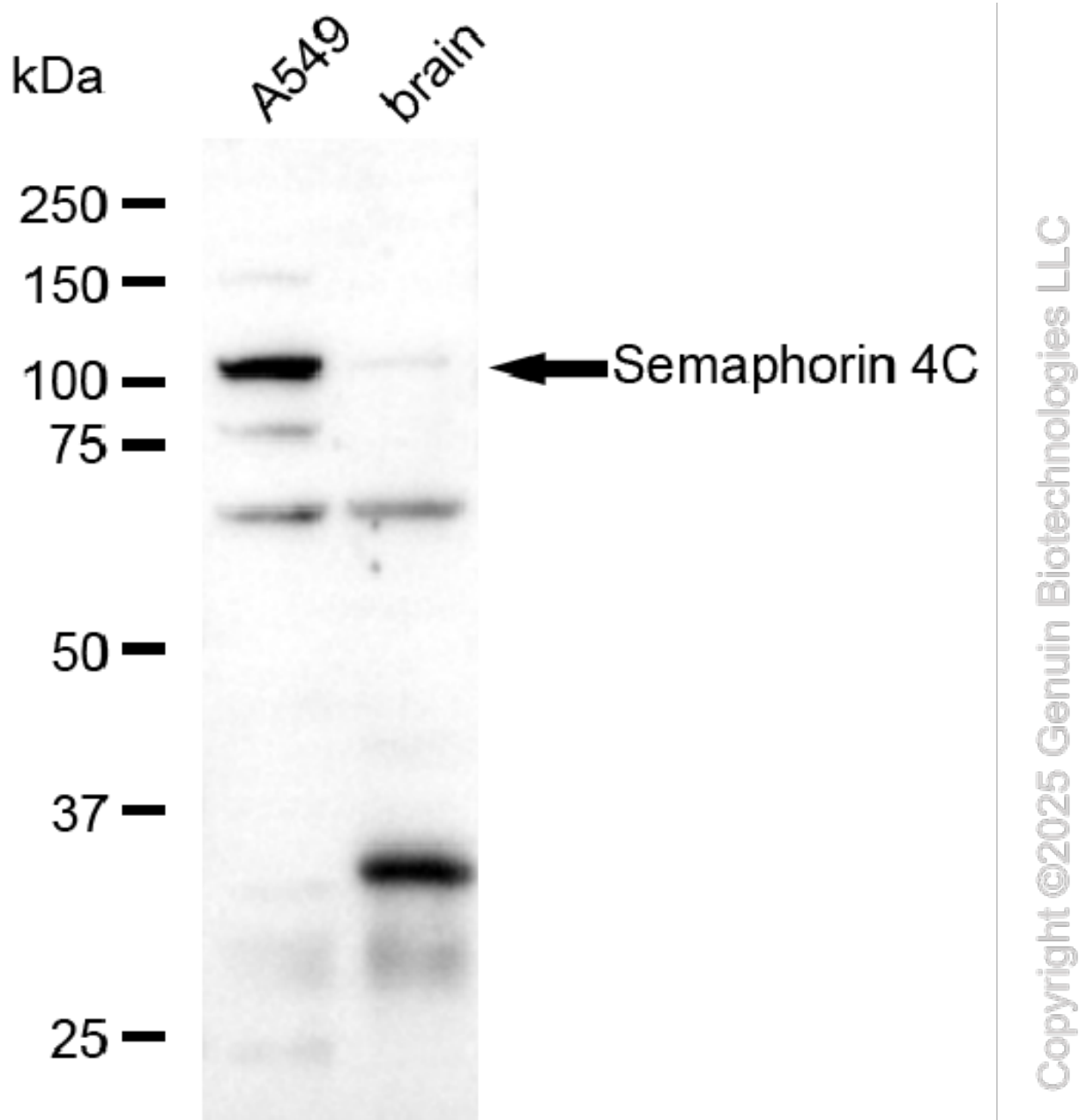
SUPPORT

SUPPORT@GENUINBIOTECH.COM
TEL: +1-540-855-7041

ORDERS

SALES@GENUINBIOTECH.COM
FAX: +1-540-855-7041

WWW.GENUINBIOTECH.COM



Western blotting analysis using anti-Semaphorin 4C antibody (Cat#52381). Total lysates (30 µg) were loaded and separated by SDS-PAGE. The blot was incubated with anti-Semaphorin 4C antibody (Cat#52381, 1:2,500) and HRP-conjugated goat anti-rabbit secondary antibody (Cat#201, 1:20,000) respectively. Image was developed using FeQ™ ECL Substrate Kit (Cat#226).