

Catalog #: 52407

Aliases

TACSTD2; Tumor Associated Calcium Signal Transducer 2; GA733-1; TROP2; EGP-1; M1S1; Membrane Component Chromosome 1 Surface Marker 1; Tumor-Associated Calcium Signal Transducer 2; Pancreatic Carcinoma Marker Protein GA733-1; Trophoblast Cell Surface Antigen 2; Cell Surface Glycoprotein Trop-2; Epithelial Glycoprotein-1; 40kD Glycoprotein, Identified By Monoclonal Antibody GA733; Membrane Component, Chromosome 1, Surface Marker 1; Gastrointestinal Tumor-Associated Antigen GA7331; Pancreatic Carcinoma Marker Protein GA7331; Cell Surface Glycoprotein TROP2; GA7331; EGP1; GP50

Background

Gene Name: TACSTD2

NCBI Gene Entry: [4070](#)

UniProt Entry: [P09758](#)

Application Information

Molecular Weight: Predicted, 36 kDa; observed, 35 kDa

Clonality: Rabbit polyclonal antibody

Species Reactivity: Human, mouse, rat

Applications Tested: Western blotting (WB), immunohistochemistry (IHC), immunocytochemistry (IC)

Immunogen

A synthesized peptide derived from human TACD2

Isotype

Rabbit IgG

Storage Buffer

Supplied in PBS containing 50% glycerol, 0.5% BSA and 0.02% sodium azide.

Storage

Store at -20 °C for one year.

Recommended Dilutions

Western Blotting (WB): 1:500-1:2,500

Immunohistochemistry (IHC): 1:100-300

SUPPORT

SUPPORT@GENUINBIOTECH.COM
TEL: +1-540-855-7041

ORDERS

SALES@GENUINBIOTECH.COM
FAX: +1-540-855-7041

WWW.GENUINBIOTECH.COM

Immunocytochemistry (IC): 1:50-200

Note: This product is for research use only.

Validation Data

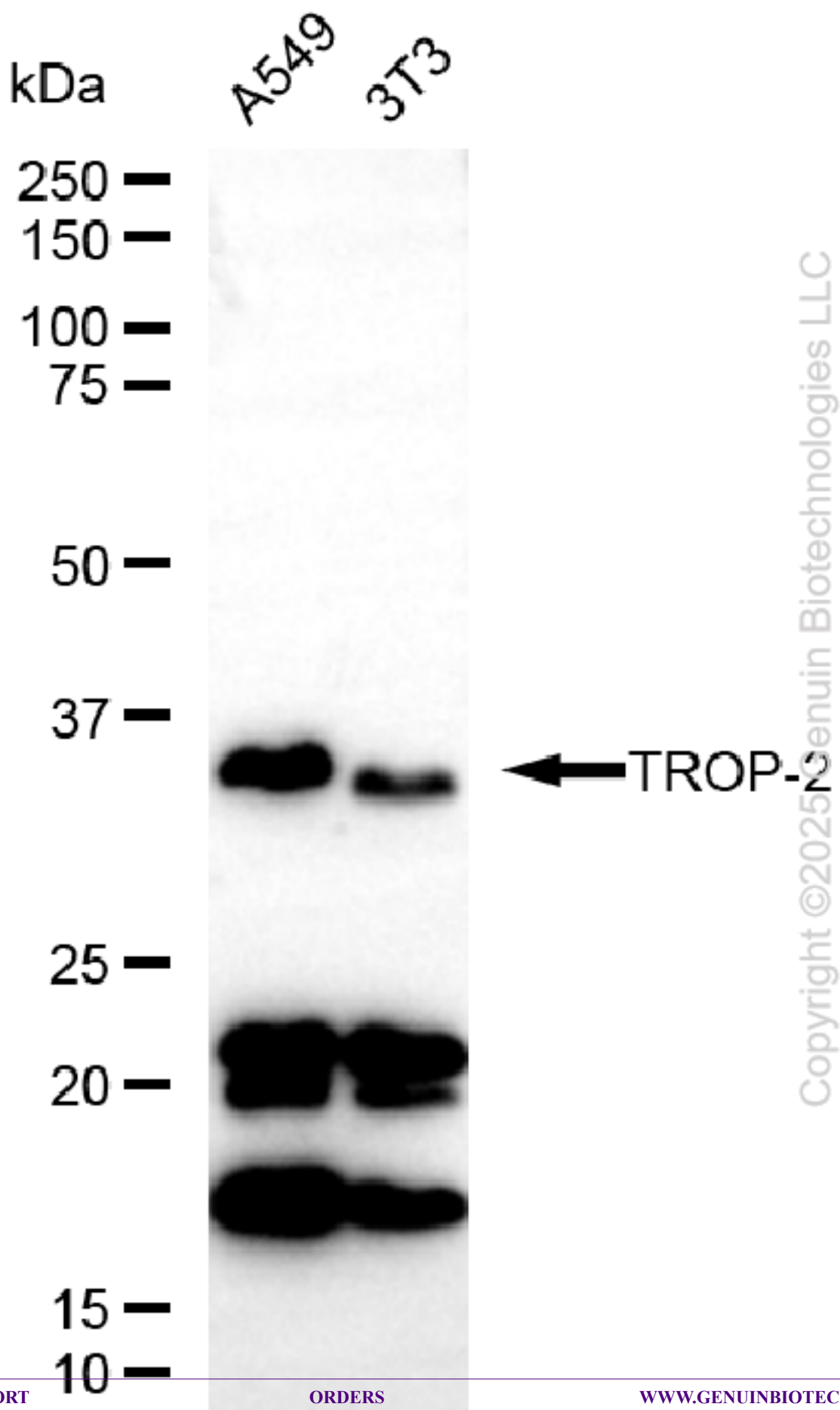
SUPPORT

SUPPORT@GENUINBIOTECH.COM
TEL: +1-540-855-7041

ORDERS

SALES@GENUINBIOTECH.COM
FAX: +1-540-855-7041

WWW.GENUINBIOTECH.COM



Copyright ©2025 Genuin Biotechnologies LLC

Western blotting analysis using anti-TACSTD2 antibody (Cat#52407). Total lysates (30 µg) were loaded and separated by SDS-PAGE. The blot was incubated with anti-TACSTD2 antibody (Cat#52407, 1:2,500) and HRP-conjugated goat anti-rabbit secondary antibody (Cat#201, 1:20,000) respectively. Image was developed using FeQ™ ECL Substrate Kit (Cat#226).