

# Anti-Phospho-IKB alpha (S32) Recombinant Rabbit Monoclonal Antibody



**Catalog #: 5241**

## Aliases

ENFKBIA; NFKB Inhibitor Alpha; IKBA; NF-Kappa-B Inhibitor Alpha; IkappaBalph; MAD-3; NFKBI; Nuclear Factor Of Kappa Light Polypeptide Gene Enhancer In B-Cells Inhibitor, Alpha; Major Histocompatibility Complex Enhancer-Binding Protein MAD3; I-Kappa-B-Alpha; Ikb-Alpha; Nuclear Factor Of Kappa Light Chain Gene Enhancer In B-Cells; IKAPPABALPHA 5; EDAID2; MAD3

## Background

Gene Name: NFKBIA

NCBI Gene Entry: [4792](#)

UniProt Entry: [P25963](#)

## Application Information

Molecular Weight: Predicted, 36 kDa; observed, 39 kDa

Clonality: Rabbit monoclonal antibody

Clone ID: 23GB1140

Species Reactivity: Human, mouse, rat

Applications Tested: Western blotting (WB), flow cytometry (FCM), immunocytochemistry (IC)

## Immunogen

A synthesized peptide derived from human Phospho-IKB alpha (S32)

## Isotype

Rabbit IgG

## Storage Buffer

Supplied in PBS (pH 7.4) containing 50% glycerol, and 0.02% sodium azide.

## Storage

Store at -20 °C for one year.

## Recommended Dilutions

Western Blotting (WB): 1:1,000-1:5,000

Flow Cytometry (FCM): 1:2,000

Immunocytochemistry (IC): 1:100-1:1,000

---

### SUPPORT

SUPPORT@GENUINBIOTECH.COM  
TEL: +1-540-855-7041

### ORDERS

SALES@GENUINBIOTECH.COM  
FAX: +1-540-855-7041

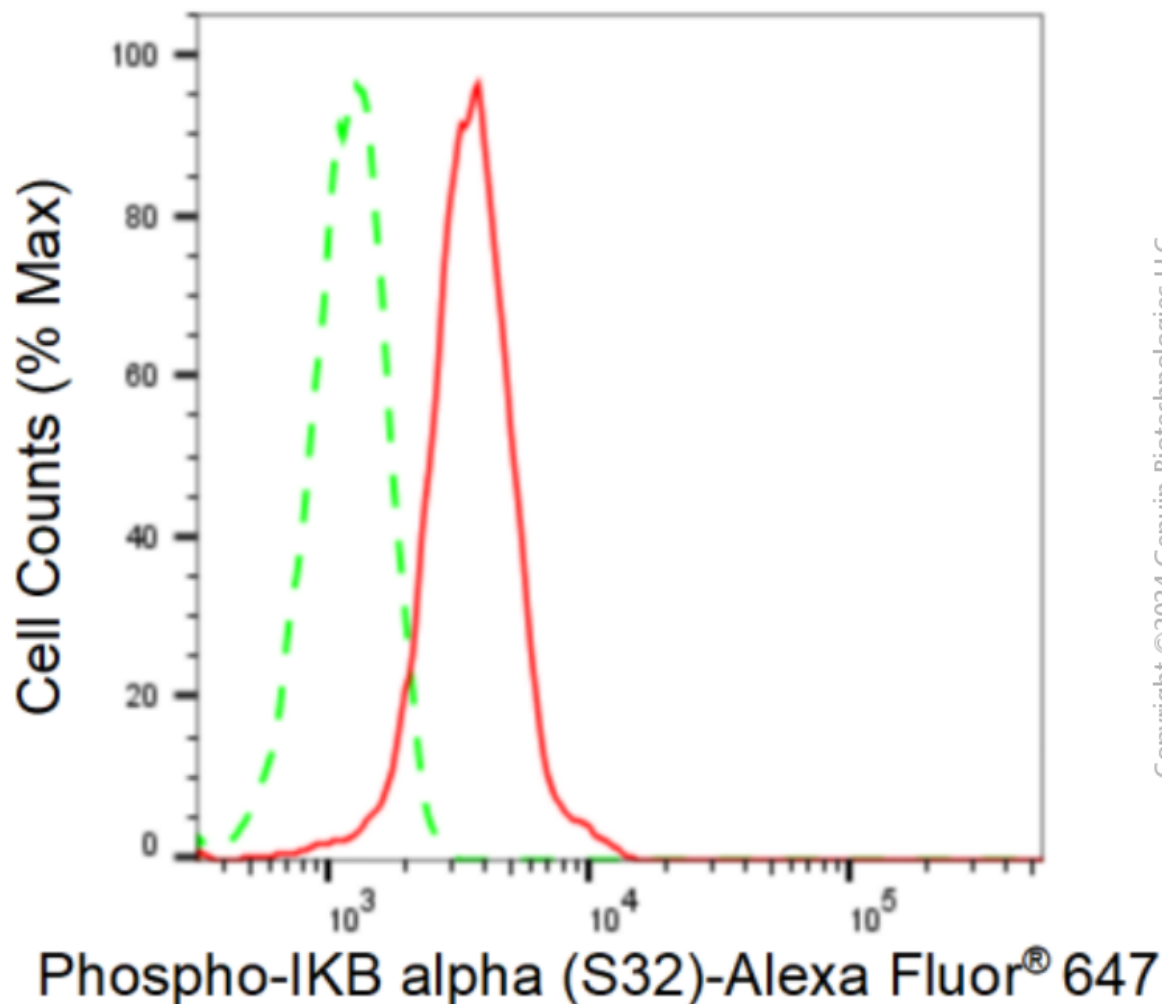
[WWW.GENUINBIOTECH.COM](http://WWW.GENUINBIOTECH.COM)

## Anti-Phospho-IKB alpha (S32) Recombinant Rabbit Monoclonal Antibody

PAGE 2

**Note:** This product is for research use only.

### Validation Data



Copyright © 2024 Genuin Biotechnologies LLC

Flow cytometric analysis of Phospho-IKB alpha (S32) expression in HepG2 cells using anti-Phospho-IKB alpha (S32) antibody (Cat#5241, 1:2,000). Green, isotype control; red, Phospho-IKB alpha (S32).

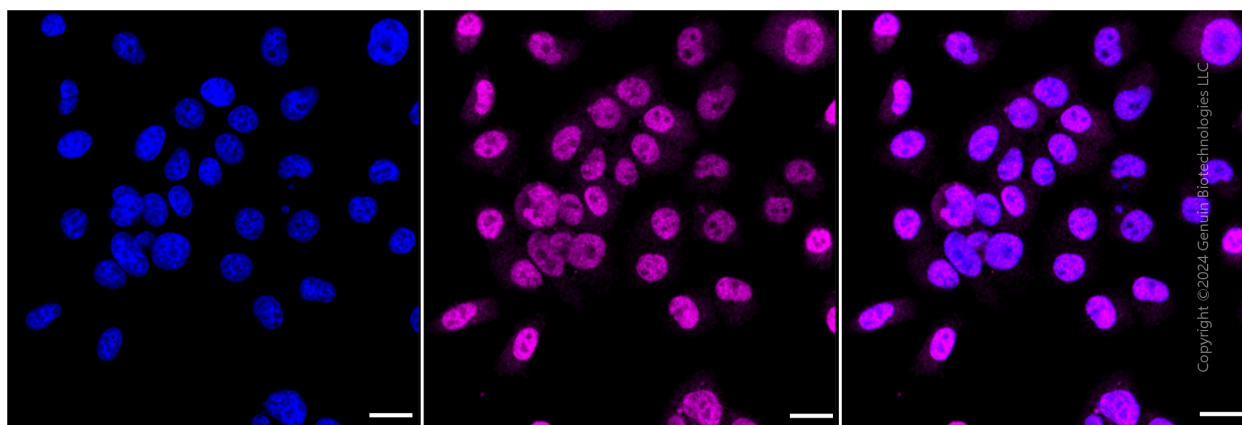
#### SUPPORT

SUPPORT@GENUINBIOTECH.COM  
TEL: +1-540-855-7041

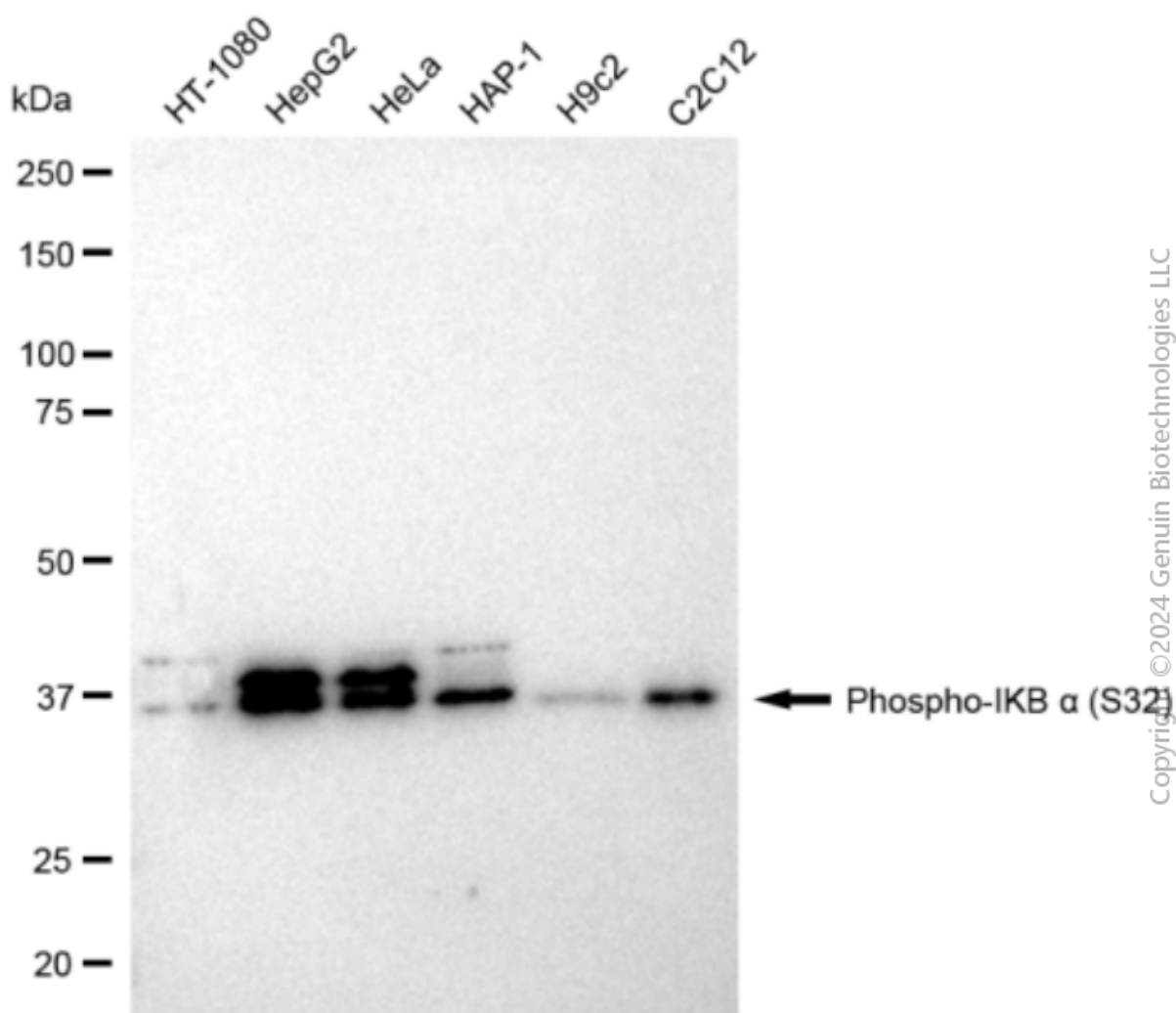
#### ORDERS

SALES@GENUINBIOTECH.COM  
FAX: +1-540-855-7041

[WWW.GENUINBIOTECH.COM](http://WWW.GENUINBIOTECH.COM)



Immunocytochemical staining of HepG2 cells with Phospho-IKB alpha (S32) antibody (Cat#5241, 1:1,000). Nuclei were stained blue with DAPI; Phospho-IKB alpha (S32) was stained magenta with Alexa Fluor® 647. Images were taken using Leica stellaris 5. Protein abundance based on laser Intensity and smart gain: Medium. Scale bar: 20  $\mu$ m.



Western blotting analysis using anti-Phospho-IKB alpha (S32) antibody (Cat#5241). Total cell lysates (30 µg) from various cell lines were loaded and separated by SDS-PAGE. The blot was incubated with anti-Phospho-IKB alpha (S32) antibody (Cat#5241, 1:5,000) and HRP-conjugated goat anti-rabbit secondary antibody (Cat#201, 1:20,000) respectively. Image was developed using FeQ™ ECL Substrate Kit (Cat#226).