

Catalog #: 52411

Aliases

SRPK1; SRSF Protein Kinase 1; SFRS Protein Kinase 1; SFRSK1; Serine/Arginine-Rich Splicing Factor Kinase 1; SR-Protein-Specific Kinase 1; EC 2.7.11.1; Serine/Arginine-Rich Protein-Specific Kinase 1; Serine/Threonine-Protein Kinase SRPK1; SR Protein Kinase 1

Background

Gene Name: SRPK1

NCBI Gene Entry: [6732](#)

UniProt Entry: [Q96SB4](#)

Application Information

Molecular Weight: Predicted, 74 kDa; observed, 95 kDa

Clonality: Rabbit polyclonal antibody

Species Reactivity: Human, mouse, rat

Applications Tested: Western blotting (WB)

Immunogen

A synthesized peptide derived from human SRPK1

Isotype

Rabbit IgG

Storage Buffer

Supplied in PBS containing 50% glycerol, 0.5% BSA and 0.02% sodium azide.

Storage

Store at -20 °C for one year.

Recommended Dilutions

Western Blotting (WB): 1:500-1:2,500

Note: This product is for research use only.

Validation Data

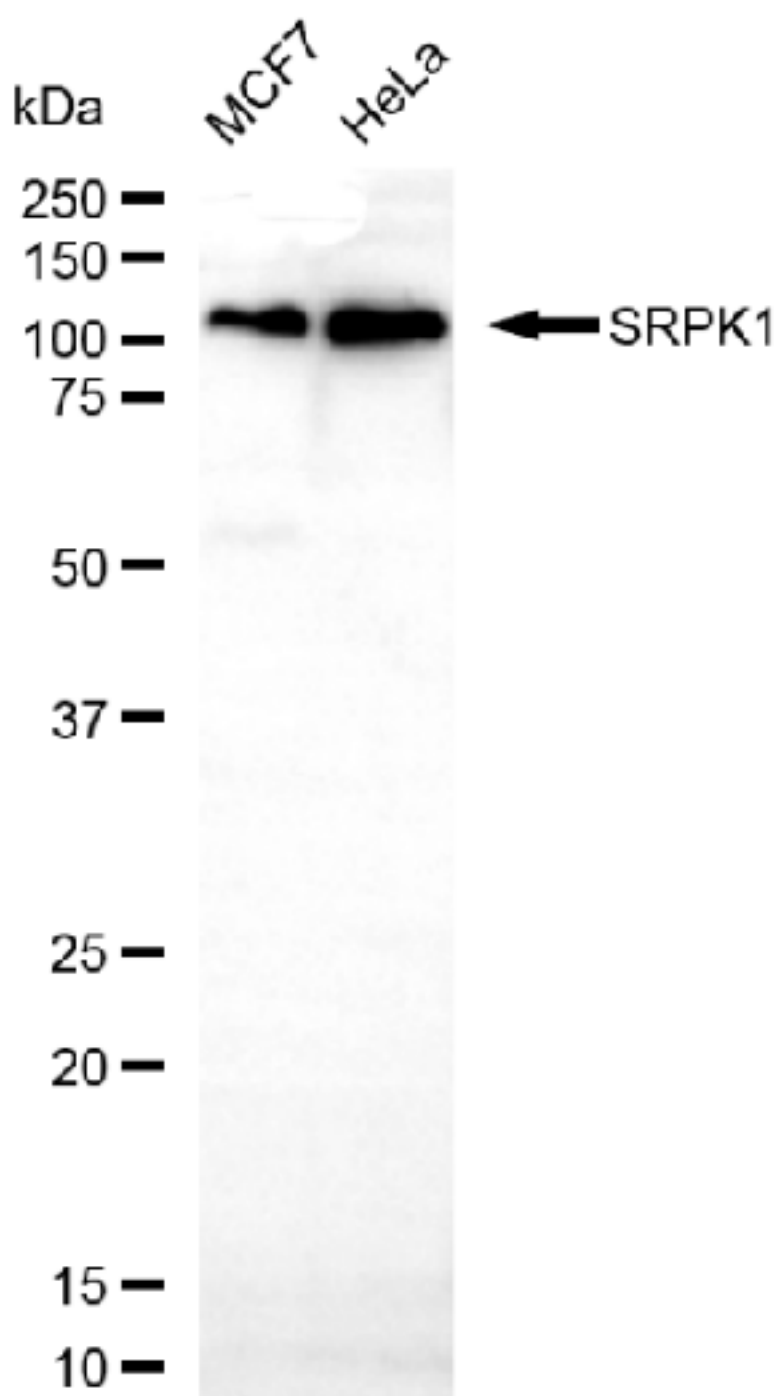
SUPPORT

SUPPORT@GENUINBIOTECH.COM
TEL: +1-540-855-7041

ORDERS

SALES@GENUINBIOTECH.COM
FAX: +1-540-855-7041

WWW.GENUINBIOTECH.COM



Copyright ©2025 Genuin Biotechnologies LLC

Western blotting analysis using anti-SRPK1 antibody (Cat#52411). Total lysates (30 μ g) were loaded and separated by SDS-PAGE. The blot was incubated with anti-SRPK1 antibody (Cat#52411, 1:2,500) and HRP-conjugated goat anti-rabbit secondary antibody (Cat#201, 1:20,000) respectively. Image was developed using FeQ™ ECL Substrate Kit (Cat#226).

SUPPORT

SUPPORT@GENUINBIOTECH.COM
TEL: +1-540-855-7041

ORDERS

SALES@GENUINBIOTECH.COM
FAX: +1-540-855-7041

WWW.GENUINBIOTECH.COM