

Catalog #: 52412

Aliases

EGR1; Early Growth Response 1; NGFI-A; AT225; Nerve Growth Factor-Induced Protein A; Early Growth Response Protein 1; Transcription Factor ETR103; KROX-24; ZIF-268; G0S30; TIS8; Transcription Factor Zif268; Zinc Finger Protein Krox-24; Zinc Finger Protein 225; Zinc Finger Gene 225; ZIF268; ZNF225; EGR-1; 225; KROX24

Background

Gene Name: EGR1

NCBI Gene Entry: [1958](#)

UniProt Entry: [P18146](#)

Application Information

Molecular Weight: Predicted, 58 kDa; observed, 60 kDa

Clonality: Rabbit polyclonal antibody

Species Reactivity: Human, mouse, rat

Applications Tested: Western blotting (WB)

Immunogen

A synthesized peptide derived from human EGR1

Isotype

Rabbit IgG

Storage Buffer

Supplied in 0.01M TBS (pH7.4) containing 50% glycerol, 1% BSA and 0.02% Proclin300.

Storage

Store at -20 °C for one year.

Recommended Dilutions

Western Blotting (WB): 1:500-1:2,500

Note: This product is for research use only.

Validation Data

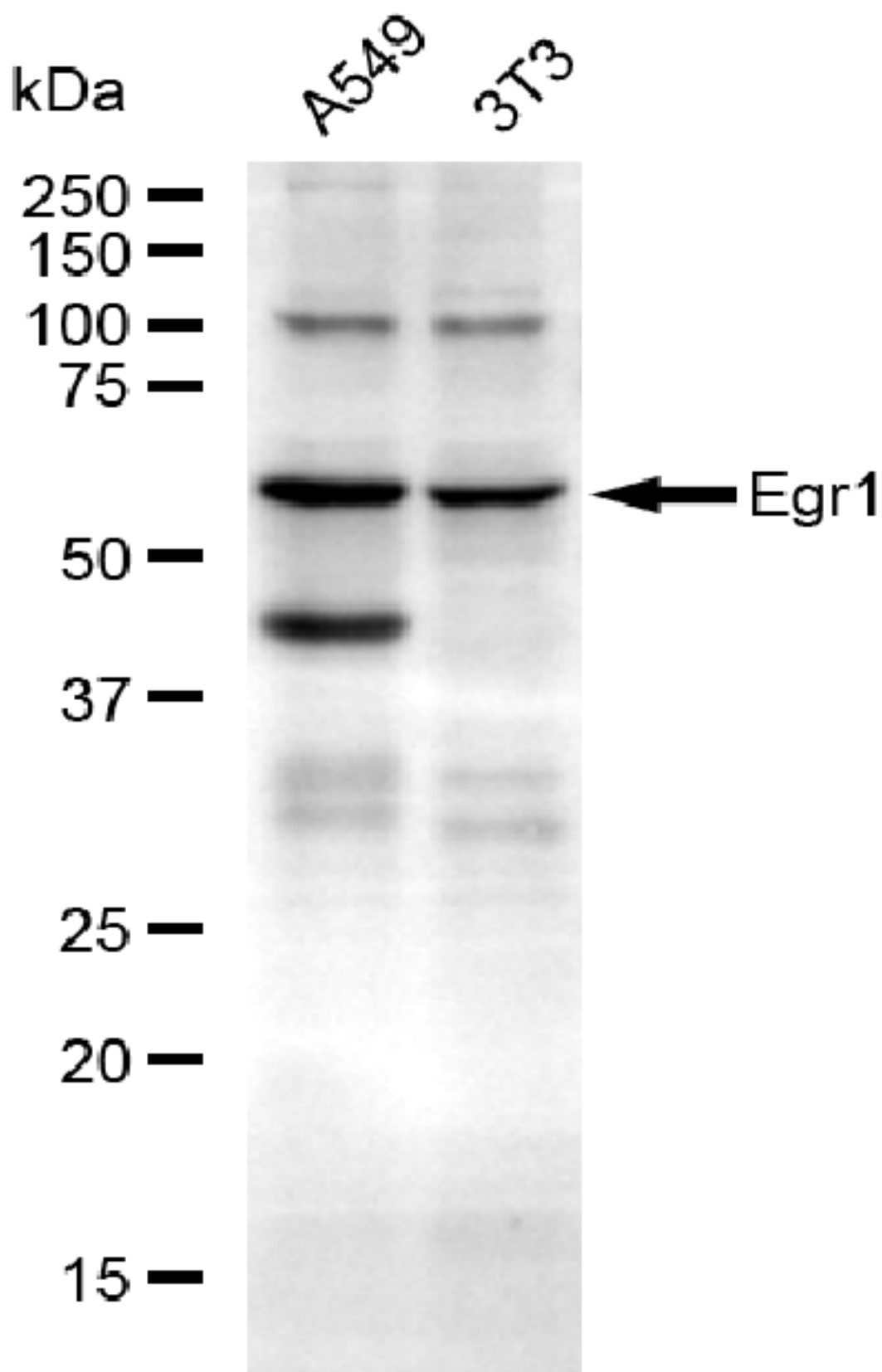
SUPPORT

SUPPORT@GENUINBIOTECH.COM
TEL: +1-540-855-7041

ORDERS

SALES@GENUINBIOTECH.COM
FAX: +1-540-855-7041

WWW.GENUINBIOTECH.COM



Copyright ©2025 Genuin Biotechnologies LLC

Western blotting analysis using anti-EGR1 antibody (Cat#52412). Total lysates (30 µg) were

SUPPORT

SUPPORT@GENUINBIOTECH.COM
TEL: +1-540-855-7041

ORDERS

SALES@GENUINBIOTECH.COM
FAX: +1-540-855-7041

WWW.GENUINBIOTECH.COM

loaded and separated by SDS-PAGE. The blot was incubated with anti-EGR1 antibody (Cat#52412, 1:2,500) and HRP-conjugated goat anti-rabbit secondary antibody (Cat#201, 1:20,000) respectively. Image was developed using FeQ™ ECL Substrate Kit (Cat#226).