

## Catalog #: 5243

### Aliases

MRPS35; Mitochondrial Ribosomal Protein S35; MRPS28; MDS023; MS35; 28S Ribosomal Protein S28, Mitochondrial; 28S Ribosomal Protein S35, Mitochondrial; Small Ribosomal Subunit Protein MS35; MRP-S28; MRP-S35; S28mt; S35mt; Mitochondrial Small Ribosomal Subunit Protein MS35; Mitochondrial Ribosomal Protein S28; HDCMD11P

### Background

Gene Name: MRPS35

NCBI Gene Entry: [60488](#)

UniProt Entry: [P82673](#)

### Application Information

Molecular Weight: Predicted, 37 kDa; observed, 36 kDa

Clonality: Rabbit monoclonal antibody

Clone ID: 25GB320

Species Reactivity: Human

Applications Tested: Western blotting (WB)

### Immunogen

A synthesized peptide derived from human MRPS35

### Isotype

Rabbit IgG

### Storage Buffer

Supplied in PBS (pH 7.4) containing 50% glycerol, and 0.02% sodium azide.

### Storage

Store at -20 °C for one year.

### Recommended Dilutions

Western Blotting (WB): 1:200-1:1,000

**Note:** This product is for research use only.

### Validation Data

---

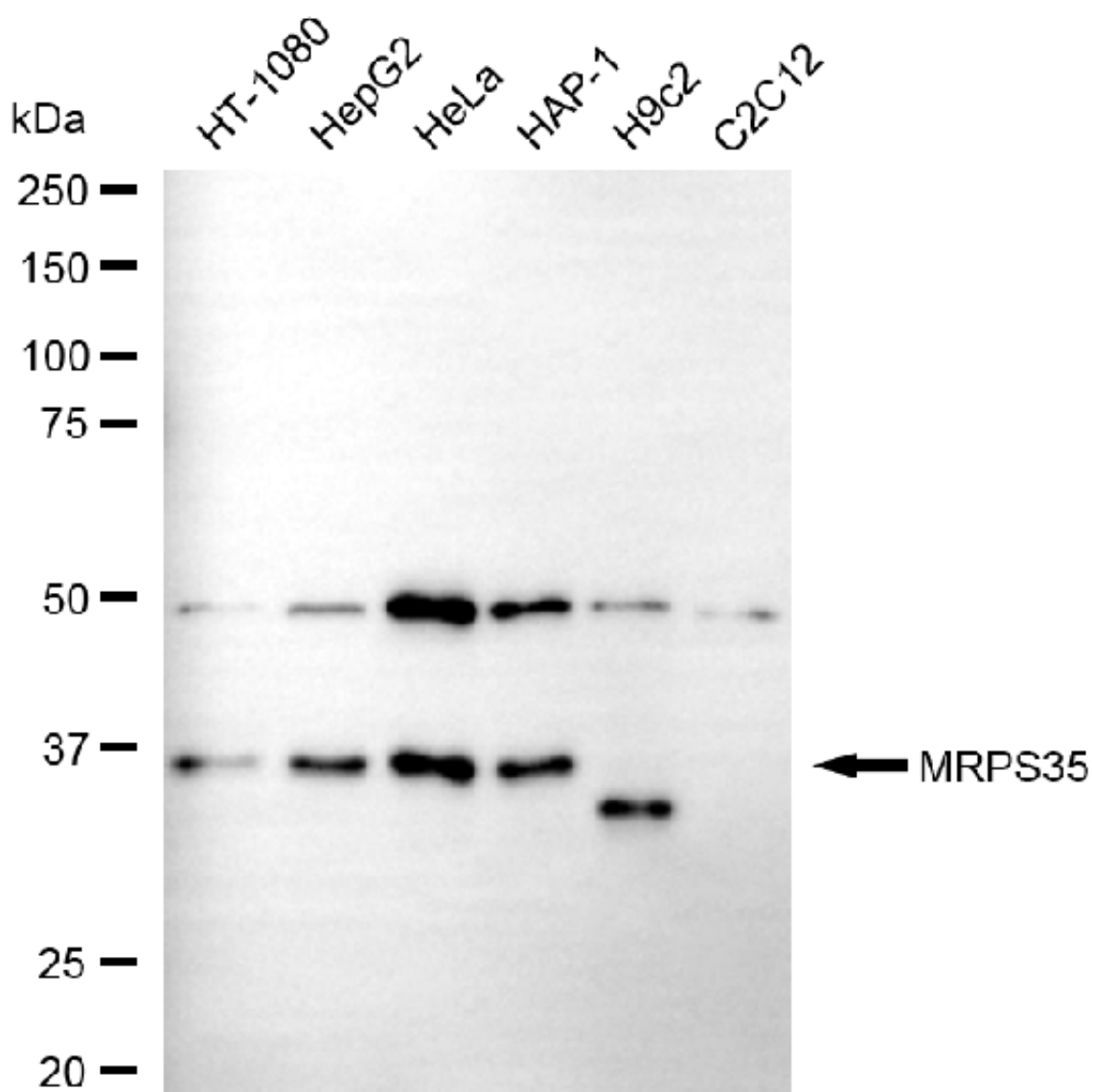
#### SUPPORT

SUPPORT@GENUINBIOTECH.COM  
TEL: +1-540-855-7041

#### ORDERS

SALES@GENUINBIOTECH.COM  
FAX: +1-540-855-7041

[WWW.GENUINBIOTECH.COM](http://WWW.GENUINBIOTECH.COM)



Copyright ©2025 Genuin Biotechnologies LLC

Western blotting analysis using anti-MRPS35 antibody (Cat#5243). Total cell lysates (30  $\mu$ g) from various cell lines were loaded and separated by SDS-PAGE. The blot was incubated with anti-MRPS35 antibody (Cat#5243, 1:1,000) and HRP-conjugated goat anti-rabbit secondary antibody (Cat#201, 1:20,000) respectively. Image was developed using FeQ™ ECL Substrate Kit (Cat#226).