

Catalog #: 52445

Aliases

KLF5; KLF Transcription Factor 5; IKLF; CKLF; BTEB2; Intestinal-Enriched Krueppel-Like Factor; Kruppel-Like Factor 5 (Intestinal); Colon Krueppel-Like Factor; Transcription Factor BTEB2; Krueppel-Like Factor 5; Kruppel Like Factor 5; BTE-Binding Protein; Basic Transcription Element Binding Protein; Basic Transcription Element-Binding Protein; Epididymis Secretory Sperm Binding Protein; Intestinal-Enriched Kruppel-Like Factor; (Intestinal Kruppel-Like Factor; Intestinal Kruppel-Like Factor; Colon Kruppel-Like Factor; GC Box Binding Protein; GC-Box-Binding Protein

Background

Gene Name: KLF5

NCBI Gene Entry: [688](#)

UniProt Entry: [Q13887](#)

Application Information

Molecular Weight: Predicted, 51 kDa

Clonality: Rabbit polyclonal antibody

Species Reactivity: Human, mouse

Applications Tested: Western blotting (WB)

Immunogen

A synthesized peptide derived from human KLF5

Isotype

Rabbit IgG

Storage Buffer

Supplied in PBS containing 50% glycerol, 0.5% BSA and 0.02% sodium azide.

Storage

Store at -20 °C for one year.

Recommended Dilutions

Western Blotting (WB): 1:500-1:2,000

SUPPORT

SUPPORT@GENUINBIOTECH.COM
TEL: +1-540-855-7041

ORDERS

SALES@GENUINBIOTECH.COM
FAX: +1-540-855-7041

WWW.GENUINBIOTECH.COM

Note: This product is for research use only.

Validation Data

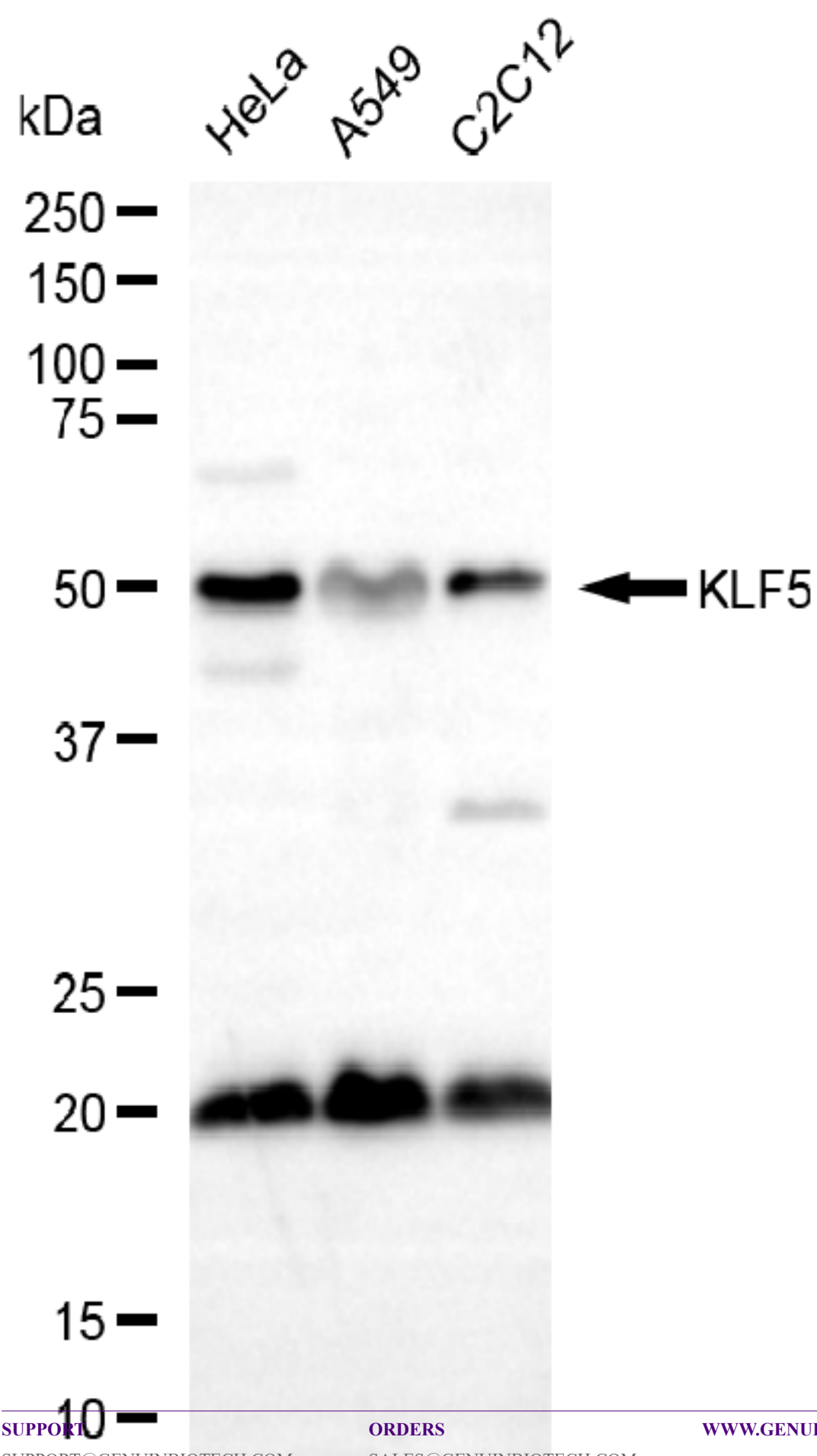
SUPPORT

SUPPORT@GENUINBIOTECH.COM
TEL: +1-540-855-7041

ORDERS

SALES@GENUINBIOTECH.COM
FAX: +1-540-855-7041

WWW.GENUINBIOTECH.COM



Copyright ©2025 Genuin Biotechnologies LLC

Western blotting analysis using anti-KLF5 antibody (Cat#52445). Total lysates (30 µg) were loaded and separated by SDS-PAGE. The blot was incubated with anti-KLF5 antibody (Cat#52445, 1:2,500) and HRP-conjugated goat anti-rabbit secondary antibody (Cat#201, 1:20,000) respectively. Image was developed using FeQ™ ECL Substrate Kit (Cat#226).