

**Catalog #: 52448**

## Aliases

ALDH3A1; Aldehyde Dehydrogenase 3 Family Member A1; Aldehyde Dehydrogenase, Dimeric NADP-Preferring; ALDH3; EC 1.2.1.5; ALDHIII; Aldehyde Dehydrogenase 3 Family, Member A1; Aldehyde Dehydrogenase Family 3 Member A1; Aldehyde Dehydrogenase Isozyme 3; Aldehyde Dehydrogenase Type III; Stomach Aldehyde Dehydrogenase; Aldehyde Dehydrogenase 3; EC 1.2.1

## Background

Gene Name: ALDH3A1

NCBI Gene Entry: [218](#)

UniProt Entry: [P30838](#)

## Application Information

Molecular Weight: Predicted, 50 kDa; observed, 50 kDa

Clonality: Rabbit polyclonal antibody

Species Reactivity: Human, mouse, rat

Applications Tested: Western blotting (WB)

## Immunogen

A synthesized peptide derived from human ALDH3A1

## Isotype

Rabbit IgG

## Storage Buffer

Supplied in PBS (pH 7.3) containing 30% glycerol, and 0.01% sodium azide.

## Storage

Store at -20 °C for one year.

## Recommended Dilutions

Western Blotting (WB): 1:500-1:1,000

**Note:** This product is for research use only.

## Validation Data

---

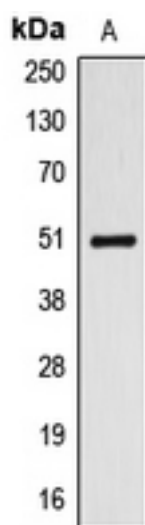
### SUPPORT

SUPPORT@GENUINBIOTECH.COM  
TEL: +1-540-855-7041

### ORDERS

SALES@GENUINBIOTECH.COM  
FAX: +1-540-855-7041

[WWW.GENUINBIOTECH.COM](http://WWW.GENUINBIOTECH.COM)



Western blotting analysis of ALDH3A1 expression in A549 (A) whole cell lysates.