

Catalog #: 52457

Aliases

SAT1; Spermidine/Spermine N1-Acetyltransferase 1; SSAT; SAT; Polyamine N-Acetyltransferase 1; Diamine N-Acetyltransferase 1; Putrescine Acetyltransferase; Diamine Acetyltransferase 1; EC 2.3.1.57; SSAT-1; Spermidine/Spermine N1-Acetyltransferase Alpha; Spermidine/Spermine N(1)-Acetyltransferase 1; Epididymis Secretory Sperm Binding Protein; Spermidine/Spermine N1-Acetyltransferase; KFSDX; DC21; KFSD

Background

Gene Name: SAT1

NCBI Gene Entry: [6303](#)

UniProt Entry: [P21673](#)

Application Information

Molecular Weight: Predicted, 20 kDa, observed, 25 kDa

Clonality: Rabbit polyclonal antibody

Species Reactivity: Human, mouse

Applications Tested: Western blotting (WB)

Immunogen

A synthesized peptide derived from human SAT1

Isotype

Rabbit IgG

Storage Buffer

Supplied in PBS containing 50% glycerol, 0.5% BSA and 0.02% sodium azide.

Storage

Store at -20 °C for one year.

Recommended Dilutions

Western Blotting (WB): 1:500-1:2,500

Note: This product is for research use only.

Validation Data

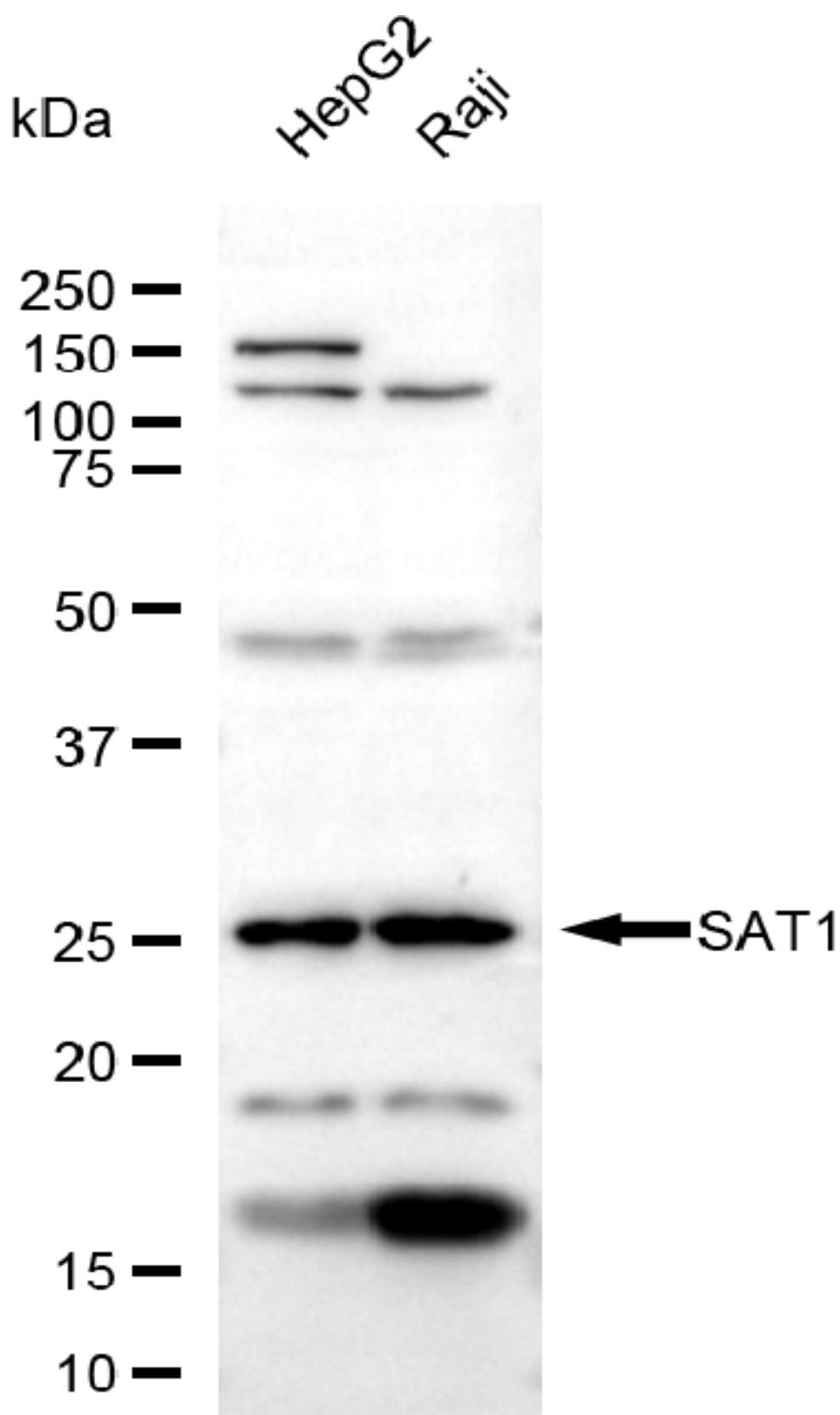
SUPPORT

SUPPORT@GENUINBIOTECH.COM
TEL: +1-540-855-7041

ORDERS

SALES@GENUINBIOTECH.COM
FAX: +1-540-855-7041

WWW.GENUINBIOTECH.COM



Copyright ©2025 Genuin Biotechnologies LLC

Western blotting analysis using anti-SAT1 antibody (Cat#52457). Total lysates (30 µg) were

SUPPORT

SUPPORT@GENUINBIOTECH.COM
TEL: +1-540-855-7041

ORDERS

SALES@GENUINBIOTECH.COM
FAX: +1-540-855-7041

WWW.GENUINBIOTECH.COM

loaded and separated by SDS-PAGE. The blot was incubated with anti-SAT1 antibody (Cat#52457, 1:2,500) and HRP-conjugated goat anti-rabbit secondary antibody (Cat#201, 1:20,000) respectively. Image was developed using FeQ™ ECL Substrate Kit (Cat#226).