

Catalog #: 52460

Aliases

STAR; Steroidogenic Acute Regulatory Protein; STARD1; StAR Related Lipid Transfer (START) Domain Containing 1; Steroidogenic Acute Regulatory Protein, Mitochondrial; START Domain-Containing Protein 1; Steroidogenic Acute Regulator; Testis Secretory Sperm-Binding Protein Li 241mP; Mitochondrial Steroid Acute Regulatory Protein; Steroid Acute Regulatory Protein; START Domain Containing 1; Cholesterol Trafficker; StARD1; StAR

Background

Gene Name: STAR

NCBI Gene Entry: [6770](#)

UniProt Entry: [P49675](#)

Application Information

Molecular Weight: Predicted, 32 kDa; observed, 28 kDa

Clonality: Rabbit polyclonal antibody

Species Reactivity: Human, mouse, rat

Applications Tested: Western blotting (WB), immunohistochemistry (IHC), immunocytochemistry (IC)

Immunogen

A synthesized peptide derived from human STAR

Isotype

Rabbit IgG

Storage Buffer

Supplied in 0.01M TBS (pH7.4) containing 50% glycerol, 1% BSA and 0.02% Proclin300.

Storage

Store at -20 °C for one year.

Recommended Dilutions

Western Blotting (WB): 1:500-1:2,000

Immunohistochemistry (IHC): 1:100-1:500

Immunocytochemistry (IC): 1:100-1:500

SUPPORT

SUPPORT@GENUINBIOTECH.COM
TEL: +1-540-855-7041

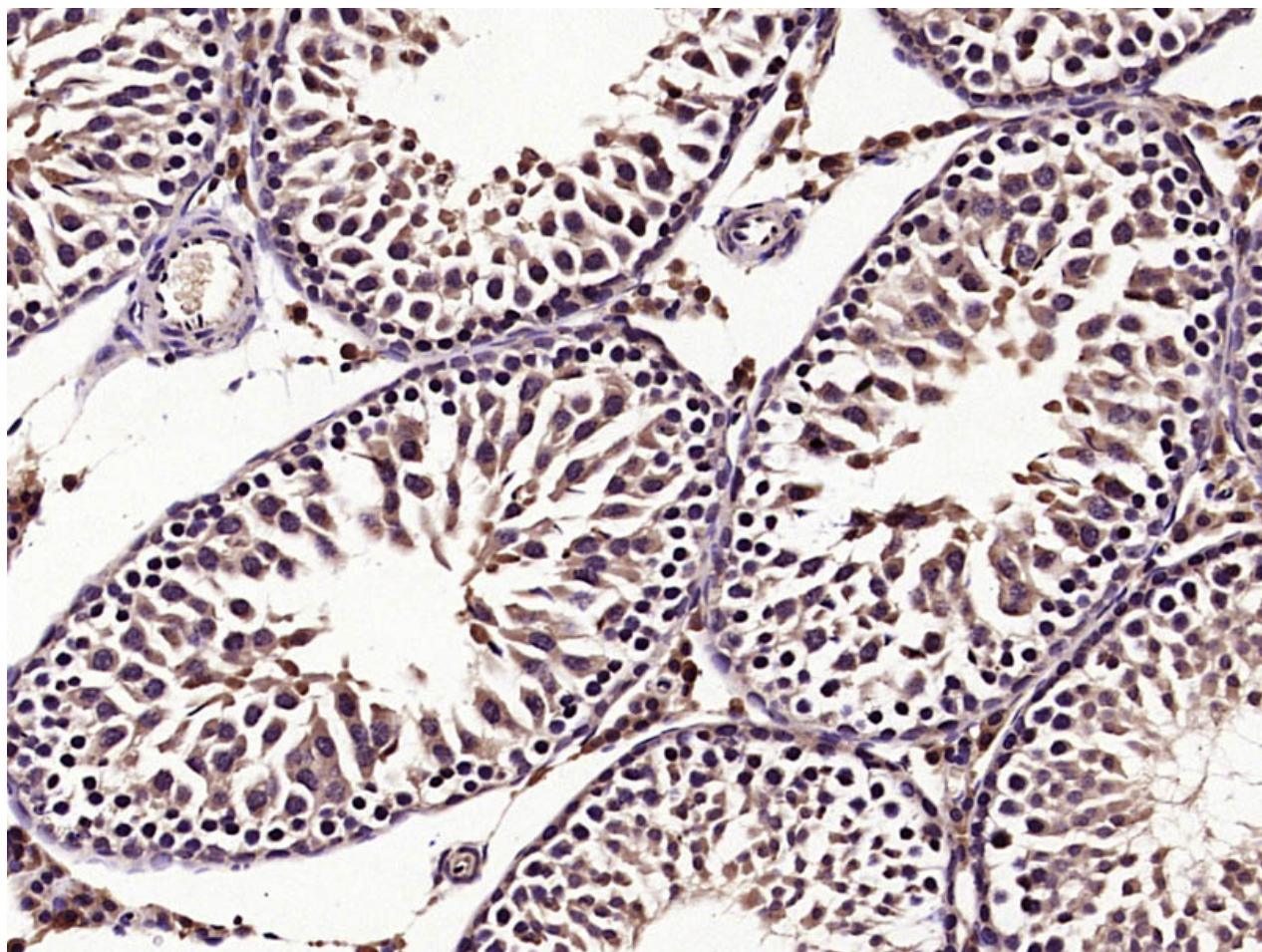
ORDERS

SALES@GENUINBIOTECH.COM
FAX: +1-540-855-7041

WWW.GENUINBIOTECH.COM

Note: This product is for research use only.

Validation Data



Paraformaldehyde-fixed, paraffin embedded (Rat testis); Antigen retrieval by microwave in sodium citrate buffer (pH6.0) ; Block endogenous peroxidase by 3% hydrogen peroxide for 30 minutes; Blocking buffer (3% BSA) at RT for 30min; Antibody incubation with STAR antibody, Unconjugated at 1:400 overnight at 4°C, followed by conjugation to the secondary antibody (labeled with HRP) and DAB staining.

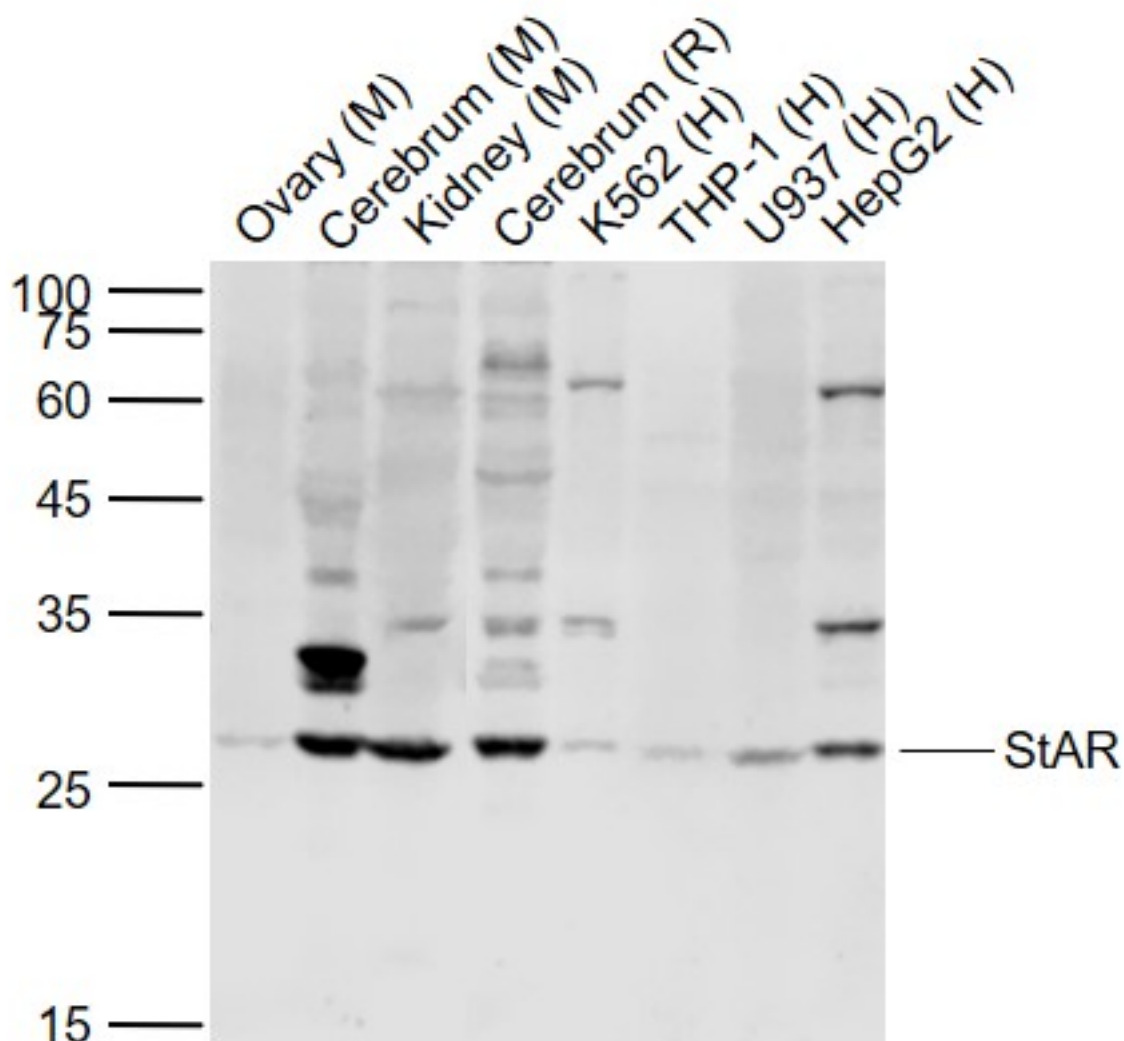
SUPPORT

SUPPORT@GENUINBIOTECH.COM
TEL: +1-540-855-7041

ORDERS

SALES@GENUINBIOTECH.COM
FAX: +1-540-855-7041

WWW.GENUINBIOTECH.COM



Western blotting analysis using anti-STAR antibody (Cat#52460). Total cell lysates (30 μ g) from various cell lines were loaded and separated by SDS-PAGE. The blot was incubated with anti-STAR antibody (Cat#52460, 1:1,000) and IRDye800CW Goat Anti-Rabbit IgG (1:20,000) respectively.