

Catalog #: 5248

Aliases

RFC2; Replication Factor C Subunit 2; RFC40; Replication Factor C (Activator 1) 2, 40kDa; Activator 1 Subunit; RF-C 40 KDa Subunit; A1 40 KDa Subunit; A1; Replication Factor C (Activator 1) 2 (40kD); Replication Factor C 40 KDa Subunit; Activator 1 40 KDa Subunit; Activator 1

Background

Gene Name: RFC2

NCBI Gene Entry: [5982](#)

UniProt Entry: [P35250](#)

Application Information

Molecular Weight: Predicted, 39 kDa; observed, 37 kDa

Clonality: Rabbit monoclonal antibody

Clone ID: 25GB345

Species Reactivity: Human, mouse, rat

Applications Tested: Western blotting (WB), flow cytometry (FCM), immunocytochemistry (IC)

Immunogen

A synthesized peptide derived from human RFC2

Isotype

Rabbit IgG

Storage Buffer

Supplied in PBS (pH 7.4) containing 50% glycerol, and 0.02% sodium azide.

Storage

Store at -20 °C for one year.

Recommended Dilutions

Western Blotting (WB): 1:1,000-1:5,000

Flow Cytometry (FCM): 1:1,000

Immunocytochemistry (IC): 1:100-1:1,000

SUPPORT

SUPPORT@GENUINBIOTECH.COM
TEL: +1-540-855-7041

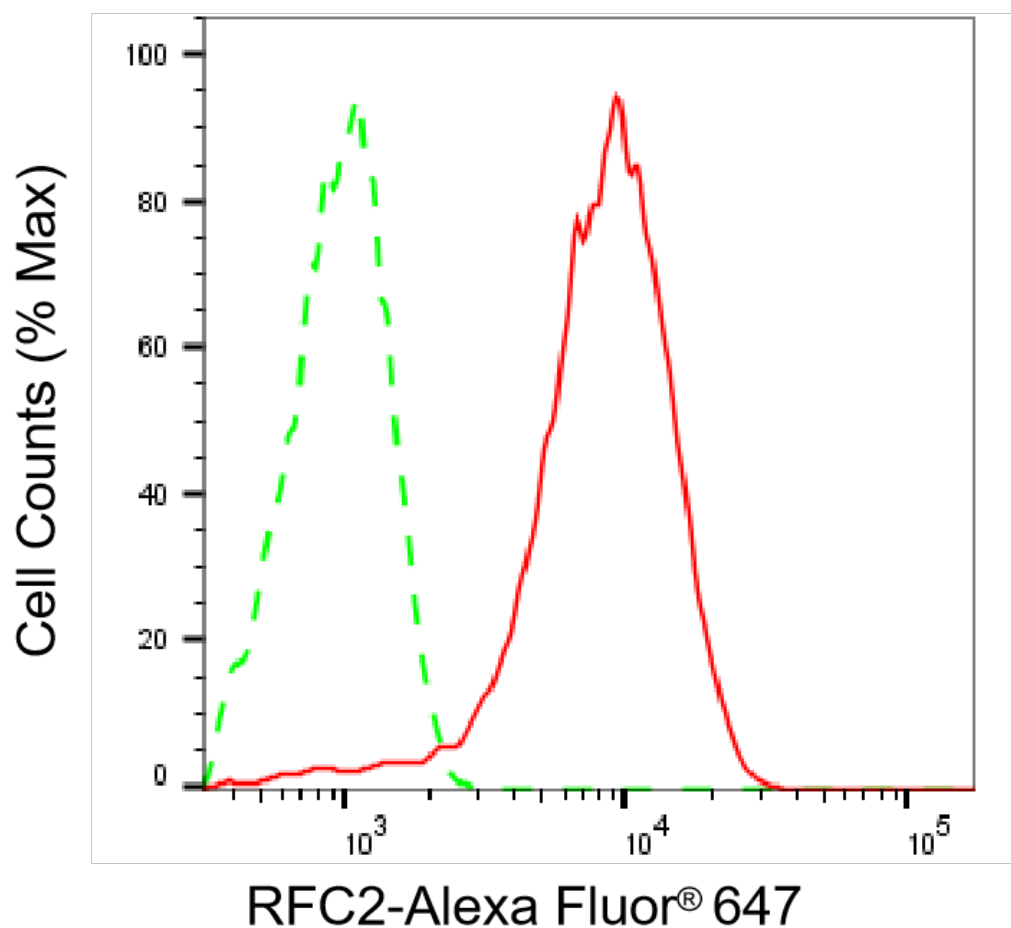
ORDERS

SALES@GENUINBIOTECH.COM
FAX: +1-540-855-7041

WWW.GENUINBIOTECH.COM

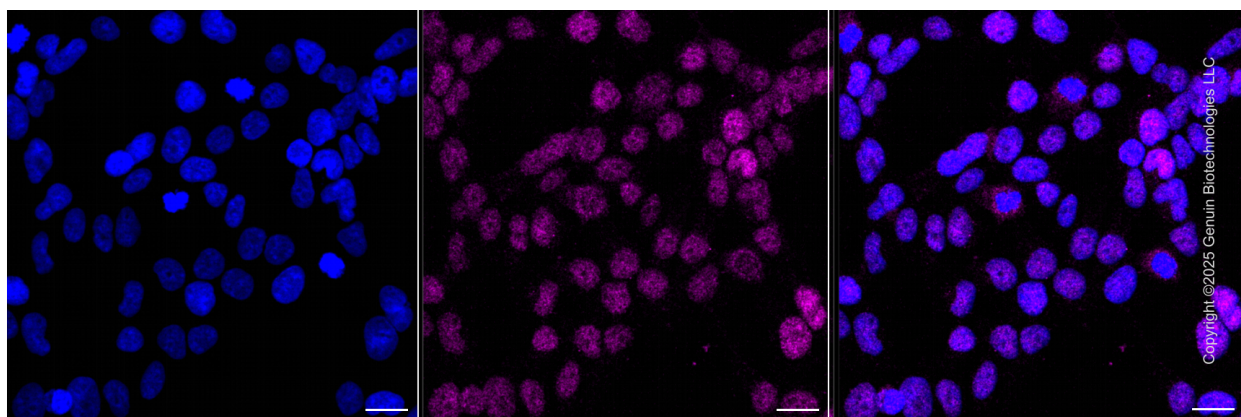
Note: This product is for research use only.

Validation Data



Copyright ©2025 Genuin Biotechnologies LLC

Flow cytometric analysis of RFC2 expression in HeLa cells using anti-RFC2 antibody (Cat#5248, 1:2,000). Green, isotype control; red, RFC2.



SUPPORT

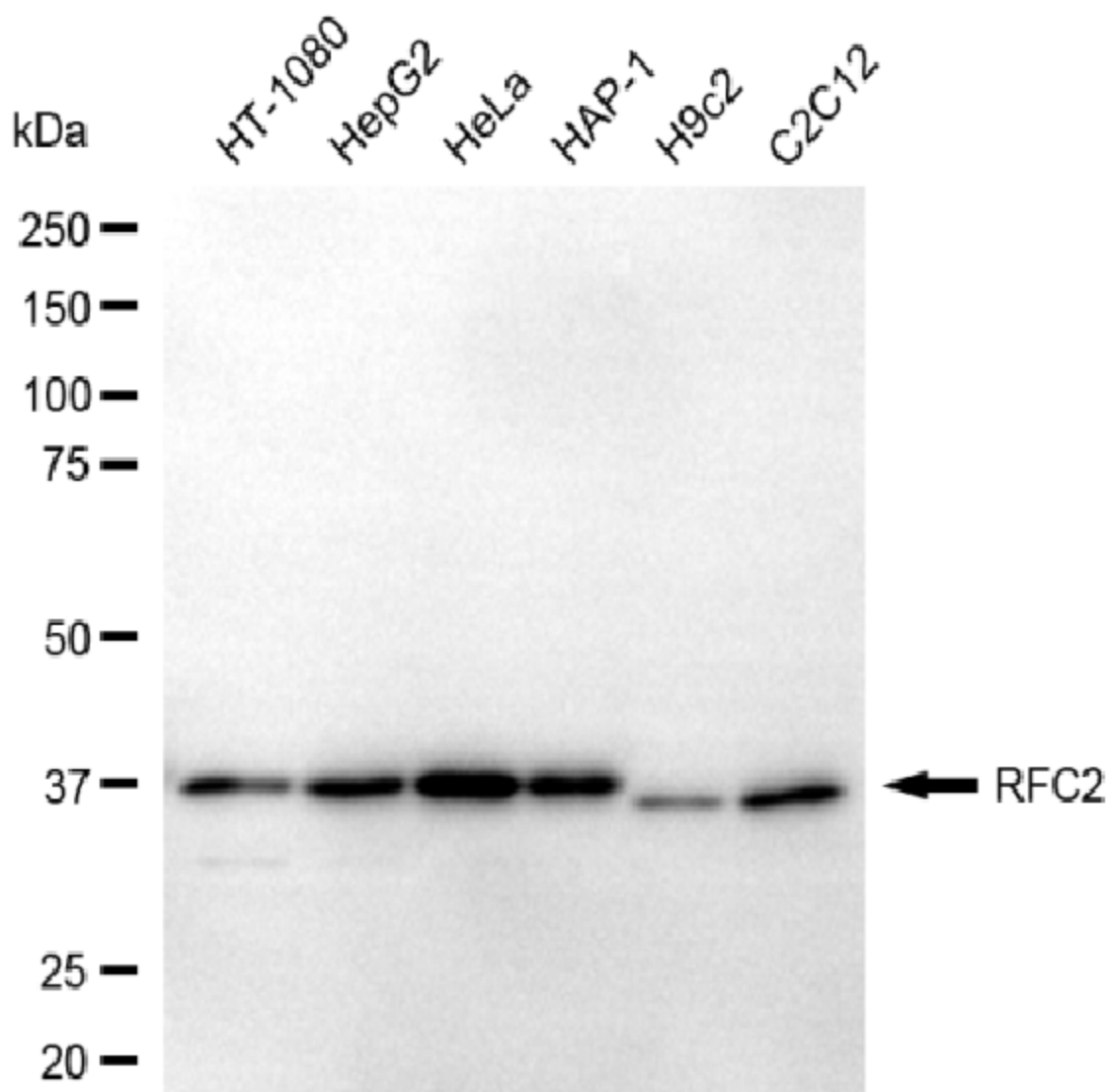
SUPPORT@GENUINBIOTECH.COM
TEL: +1-540-855-7041

ORDERS

SALES@GENUINBIOTECH.COM
FAX: +1-540-855-7041

WWW.GENUINBIOTECH.COM

Immunocytochemical staining of HeLa cells with anti-RFC2 protein antibody (Cat#5248, 1:1,000). Nuclei were stained blue with DAPI; RFC2 was stained magenta with Alexa Fluor® 647. Images were taken using Leica stellaris 5. Protein abundance based on laser Intensity and smart gain: Medium. Scale bar, 20 µm.



Copyright ©2025 Genuin Biotechnologies LLC

Western blotting analysis using anti-RFC2 antibody (Cat#5248). Total cell lysates (30 µg) from various cell lines were loaded and separated by SDS-PAGE. The blot was incubated with anti-RFC2 antibody (Cat#5248, 1:5,000) and HRP-conjugated goat anti-rabbit secondary antibody (Cat#201, 1:20,000) respectively. Image was developed using FeQ™ ECL Substrate Kit (Cat#226).

SUPPORT

SUPPORT@GENUINBIOTECH.COM
TEL: +1-540-855-7041

ORDERS

SALES@GENUINBIOTECH.COM
FAX: +1-540-855-7041

WWW.GENUINBIOTECH.COM