

Catalog #: 52487

Aliases

CMPK2; Cytidine/Uridine Monophosphate Kinase 2; Nucleoside-Diphosphate Kinase 2; UMP-CMPK2; TYKi; NDK; Cytidine Monophosphate (UMP-CMP) Kinase 2, Mitochondrial; UMP-CMP Kinase 2, Mitochondrial; Cytidylate Kinase 2; UMP/CMP Kinase; Thymidylate Kinase Family LPS-Inducible Member; Thymidine Monophosphate Kinase 2; Mitochondrial UMP-CMP Kinase; EC 2.7.4.14; EC 2.7.4.6; IBGC10; TMPK2

Background

Gene Name: CMPK2

NCBI Gene Entry: [129607](#)

UniProt Entry: [Q5EBM0](#)

Application Information

Molecular Weight: Predicted, 49 kDa; observed, 49 kDa

Clonality: Rabbit polyclonal antibody

Species Reactivity: Human, mouse

Applications Tested: Western blotting (WB)

Immunogen

A synthesized peptide derived from human CMPK2

Isotype

Rabbit IgG

Storage Buffer

Supplied in PBS containing 50% glycerol, 0.5% BSA and 0.02% sodium azide.

Storage

Store at -20 °C for one year.

Recommended Dilutions

Western Blotting (WB): 1:500-1:2,000

Note: This product is for research use only.

Validation Data

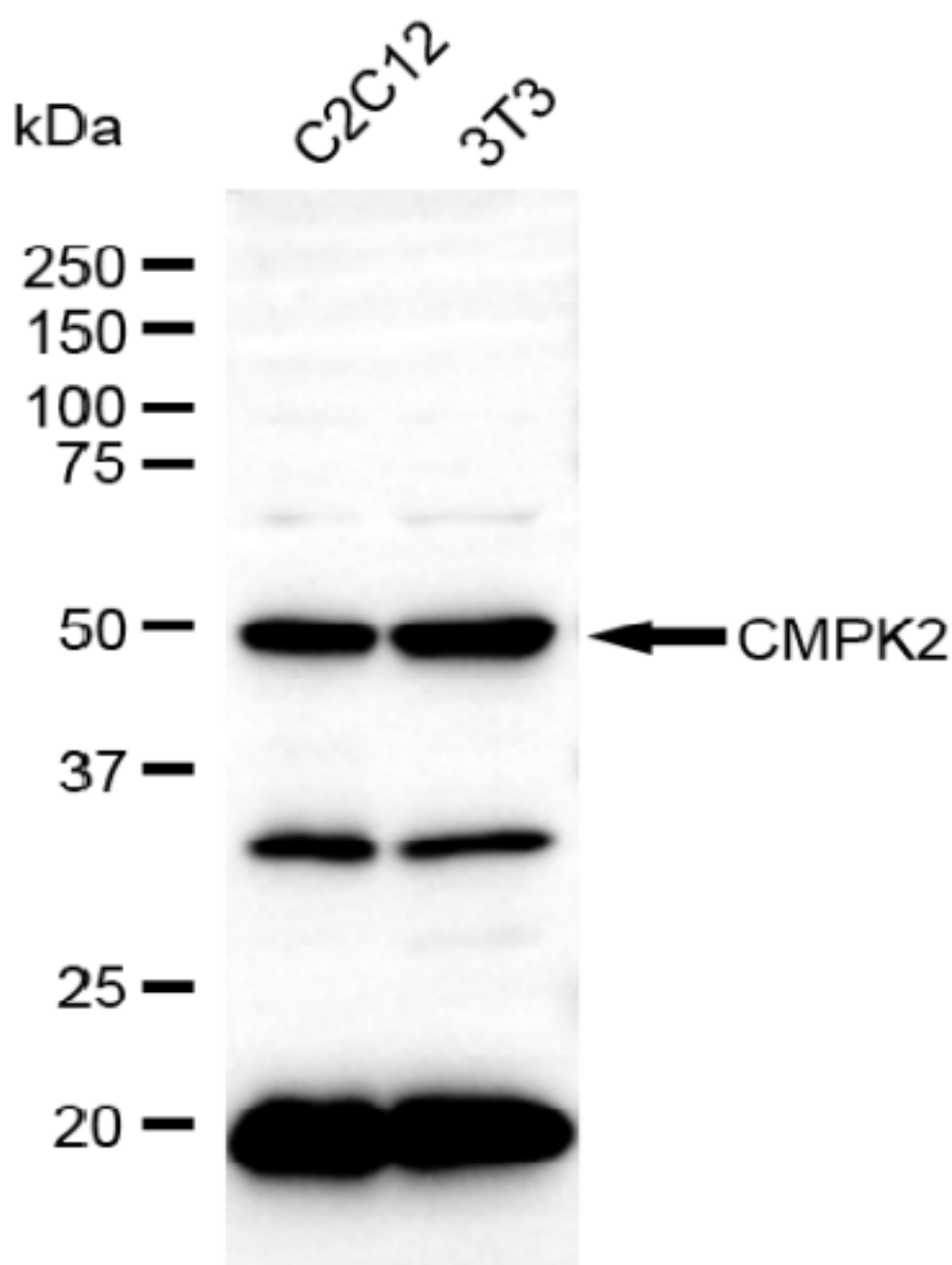
SUPPORT

SUPPORT@GENUINBIOTECH.COM
TEL: +1-540-855-7041

ORDERS

SALES@GENUINBIOTECH.COM
FAX: +1-540-855-7041

WWW.GENUINBIOTECH.COM



Copyright ©2025 Genuin Biotechnologies LLC

Western blotting analysis using anti-CMPK2 antibody (Cat#52487). Total lysates (30 µg) were loaded and separated by SDS-PAGE. The blot was incubated with anti-CMPK2 antibody (Cat#52487, 1:2,500) and HRP-conjugated goat anti-rabbit secondary antibody (Cat#201, 1:20,000) respectively. Image was developed using FeQ™ ECL Substrate Kit (Cat#226).

SUPPORT

SUPPORT@GENUINBIOTECH.COM
TEL: +1-540-855-7041

ORDERS

SALES@GENUINBIOTECH.COM
FAX: +1-540-855-7041

WWW.GENUINBIOTECH.COM