

## Catalog #: 52495

### Aliases

MTFR1; Mitochondrial Fission Regulator 1; FAM54A2; CHPPR; KIAA0009; Chondrocyte Protein With A Poly-Proline Region; Likely Ortholog Of Chicken Chondrocyte Protein With A Poly Proline Region

### Background

Gene Name: MTFR1

NCBI Gene Entry: [9650](#)

UniProt Entry: [Q15390](#)

### Application Information

Molecular Weight: Predicted, 37 kDa; observed, 36 kDa

Clonality: Rabbit polyclonal antibody

Species Reactivity: Human, mouse, rat

Applications Tested: Western blotting (WB)

### Immunogen

A synthesized peptide derived from human MTFR1

### Isotype

Rabbit IgG

### Storage Buffer

Supplied in PBS containing 50% glycerol, and 0.02% sodium azide.

### Storage

Store at -20 °C for one year.

### Recommended Dilutions

Western Blotting (WB): 1:500-2,000

**Note:** This product is for research use only.

### Validation Data

---

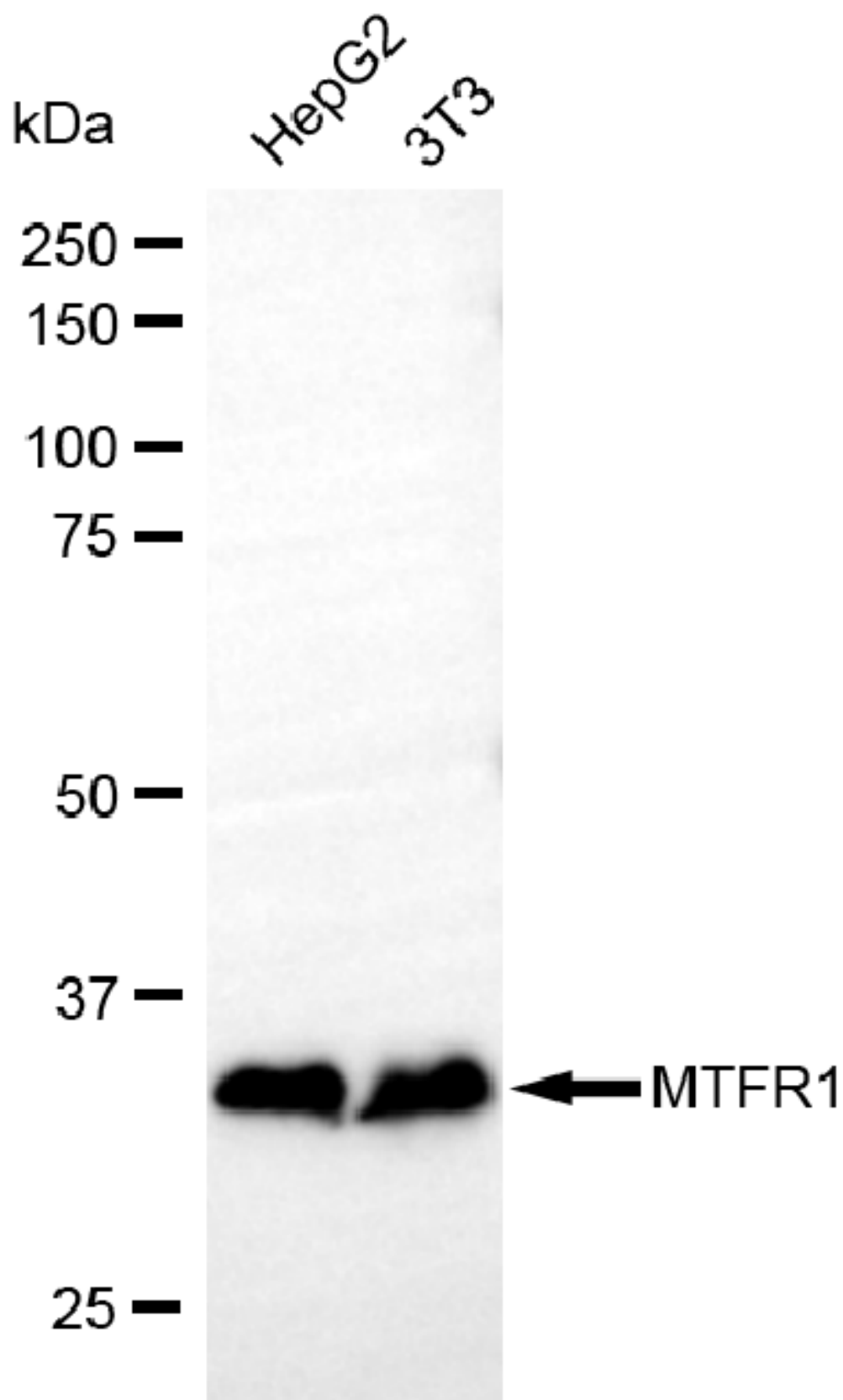
#### SUPPORT

SUPPORT@GENUINBIOTECH.COM  
TEL: +1-540-855-7041

#### ORDERS

SALES@GENUINBIOTECH.COM  
FAX: +1-540-855-7041

[WWW.GENUINBIOTECH.COM](http://WWW.GENUINBIOTECH.COM)



Copyright ©2025 Genuin Biotechnologies LLC

Western blotting analysis using anti-MTFR1 antibody (Cat#52495). Total lysates (30 µg) were

**SUPPORT**

SUPPORT@GENUINBIOTECH.COM  
TEL: +1-540-855-7041

**ORDERS**

SALES@GENUINBIOTECH.COM  
FAX: +1-540-855-7041

[WWW.GENUINBIOTECH.COM](http://WWW.GENUINBIOTECH.COM)

loaded and separated by SDS-PAGE. The blot was incubated with anti-MTFR1 antibody (Cat#52495, 1:2,500) and HRP-conjugated goat anti-rabbit secondary antibody (Cat#201, 1:20,000) respectively. Image was developed using FeQ™ ECL Substrate Kit (Cat#226).