

Catalog #: 52500

Aliases

PAGE5; PAGE Family Member 5; PAGE-5 CT16.1; CT16.2; P Antigen Family, Member 5 (Prostate Associated); Cancer/Testis Antigen Family 16, Member 1; Cancer/Testis Antigen Family 16, Member 2; Prostate-Associated Gene 5 Protein; G Antigen Family E Member 1; Cancer/Testis Antigen 16.1; P Antigen Family Member 5; GAGEE1; CT16

Background

Gene Name: PAGE5

NCBI Gene Entry: [90737](#)

UniProt Entry: [Q96GU1](#)

Application Information

Molecular Weight: Predicted, 14 kDa, observed, 14 kDa

Clonality: Rabbit polyclonal antibody

Species Reactivity: Human

Applications Tested: Western blotting (WB)

Immunogen

A synthesized peptide derived from human GGEE1

Isotype

Rabbit IgG

Storage Buffer

Supplied in PBS (pH7.4) containing 50% glycerol, 0.5% BSA and 0.02% sodium azide.

Storage

Store at -20 °C for one year.

Recommended Dilutions

Western Blotting (WB): 1:500-2,000

Note: This product is for research use only.

Validation Data

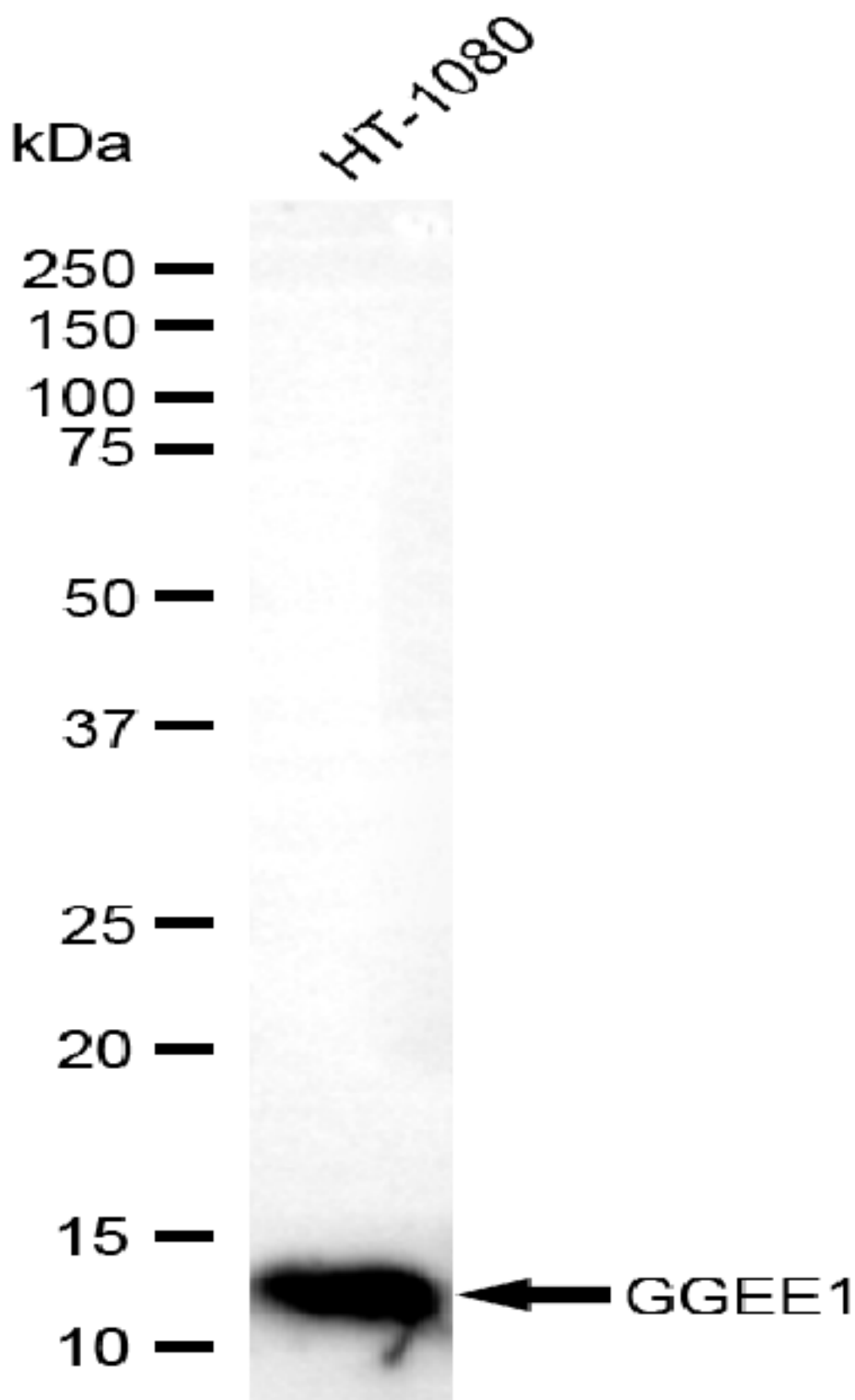
SUPPORT

SUPPORT@GENUINBIOTECH.COM
TEL: +1-540-855-7041

ORDERS

SALES@GENUINBIOTECH.COM
FAX: +1-540-855-7041

WWW.GENUINBIOTECH.COM



Copyright ©2025 Genuin Biotechnologies LLC

Western blotting analysis using anti-PAGE5 antibody (Cat#52500). Total lysates (30 μ g) were

SUPPORT

SUPPORT@GENUINBIOTECH.COM
TEL: +1-540-855-7041

ORDERS

SALES@GENUINBIOTECH.COM
FAX: +1-540-855-7041

WWW.GENUINBIOTECH.COM

loaded and separated by SDS-PAGE. The blot was incubated with anti-PAGE5 antibody (Cat#52500, 1:2,500) and HRP-conjugated goat anti-rabbit secondary antibody (Cat#201, 1:20,000) respectively. Image was developed using FeQ™ ECL Substrate Kit (Cat#226).