

**Catalog #: 52508**

## Aliases

EHD2; EH Domain Containing 2; PAST2; EH Domain-Containing Protein 2; PAST Homolog 2

## Background

Gene Name: EHD2

NCBI Gene Entry: [30846](#)

UniProt Entry: [Q9NZN4](#)

## Application Information

Molecular Weight: Predicted, 61 kDa

Clonality: Rabbit polyclonal antibody

Species Reactivity: Human, mouse, rat

Applications Tested: Western blotting (WB)

## Immunogen

A synthesized peptide derived from human EHD2

## Isotype

Rabbit IgG

## Storage Buffer

Supplied in PBS containing 50% glycerol, and 0.02% sodium azide.

## Storage

Store at -20 °C for one year.

## Recommended Dilutions

Western Blotting (WB): 1:1,000-1:2,000

**Note:** This product is for research use only.

## Validation Data

---

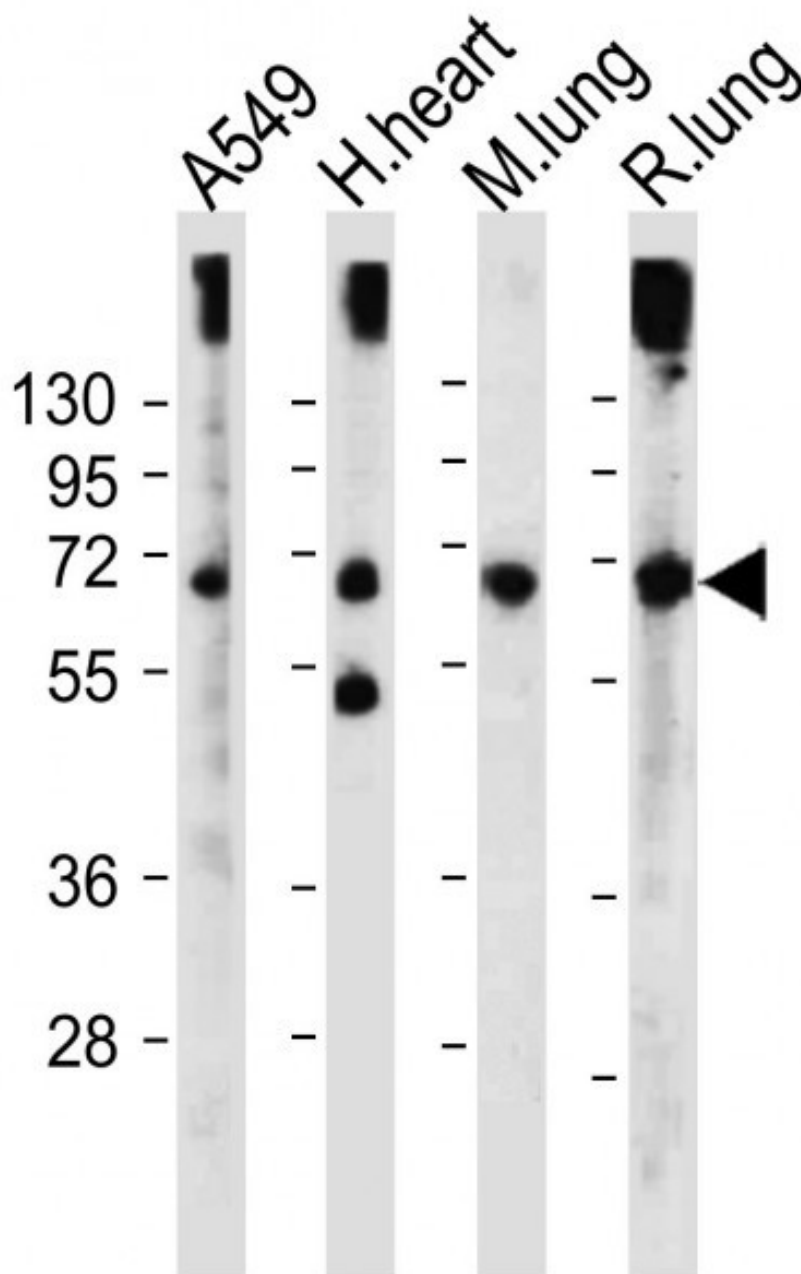
### SUPPORT

SUPPORT@GENUINBIOTECH.COM  
TEL: +1-540-855-7041

### ORDERS

SALES@GENUINBIOTECH.COM  
FAX: +1-540-855-7041

[WWW.GENUINBIOTECH.COM](http://WWW.GENUINBIOTECH.COM)



Western blotting analysis using anti-EHD2 antibody (Cat#52508). Total lysates (20 µg) were loaded and separated by SDS-PAGE. The blot was incubated with anti-EHD2 antibody (Cat#52508, 1:2,000) and Peroxidase conjugated goat anti-rabbit IgG secondary antibody respectively.