

## Catalog #: 52514

### Aliases

MKI67; Marker Of Proliferation Ki-67; Antigen Identified By Monoclonal Antibody Ki-67; PPP1R105; MIB-1; Protein Phosphatase 1, Regulatory Subunit 105; Molecular Immunology Borstel Antibody 1; Proliferation Marker Protein Ki-67; Antigen Ki67; Ki-67; Proliferation-Related Ki-67 Antigen; Antigen KI-67; MIB-; KIA

### Background

Gene Name: MKI67

NCBI Gene Entry: [4288](#)

UniProt Entry: [P46013](#)

### Application Information

Molecular Weight: Predicted, 359 kDa; observed, 359 kDa

Clonality: Rabbit polyclonal antibody

Species Reactivity: Human

Applications Tested: Western blotting (WB), immunohistochemistry (IHC), immunocytochemistry (IC)

### Immunogen

A synthesized peptide derived from human Ki-67

### Isotype

Rabbit IgG

### Storage Buffer

Supplied in 0.01M TBS (pH7.4) with 1% BSA, 0.02% proclin300 and 50% glycerol.

### Storage

Store at -20 °C for one year.

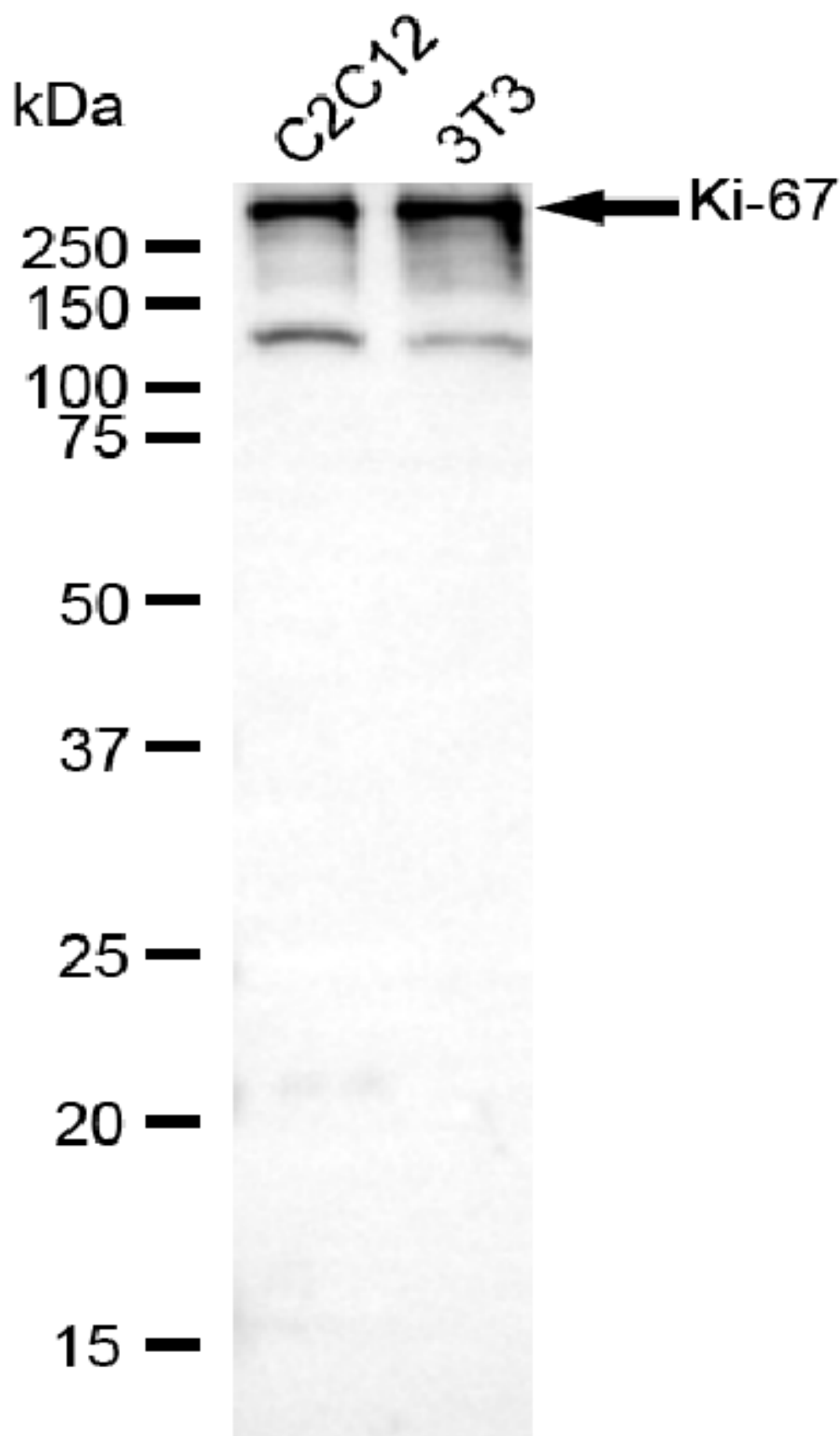
### Recommended Dilutions

Western Blotting (WB): 1:500-1:2,500

Immunohistochemistry (IHC): 1:200-1:800

**Note:** This product is for research use only.

**Validation Data**



Copyright ©2025 Genuin Biotechnologies LLC

**SUPPORT**

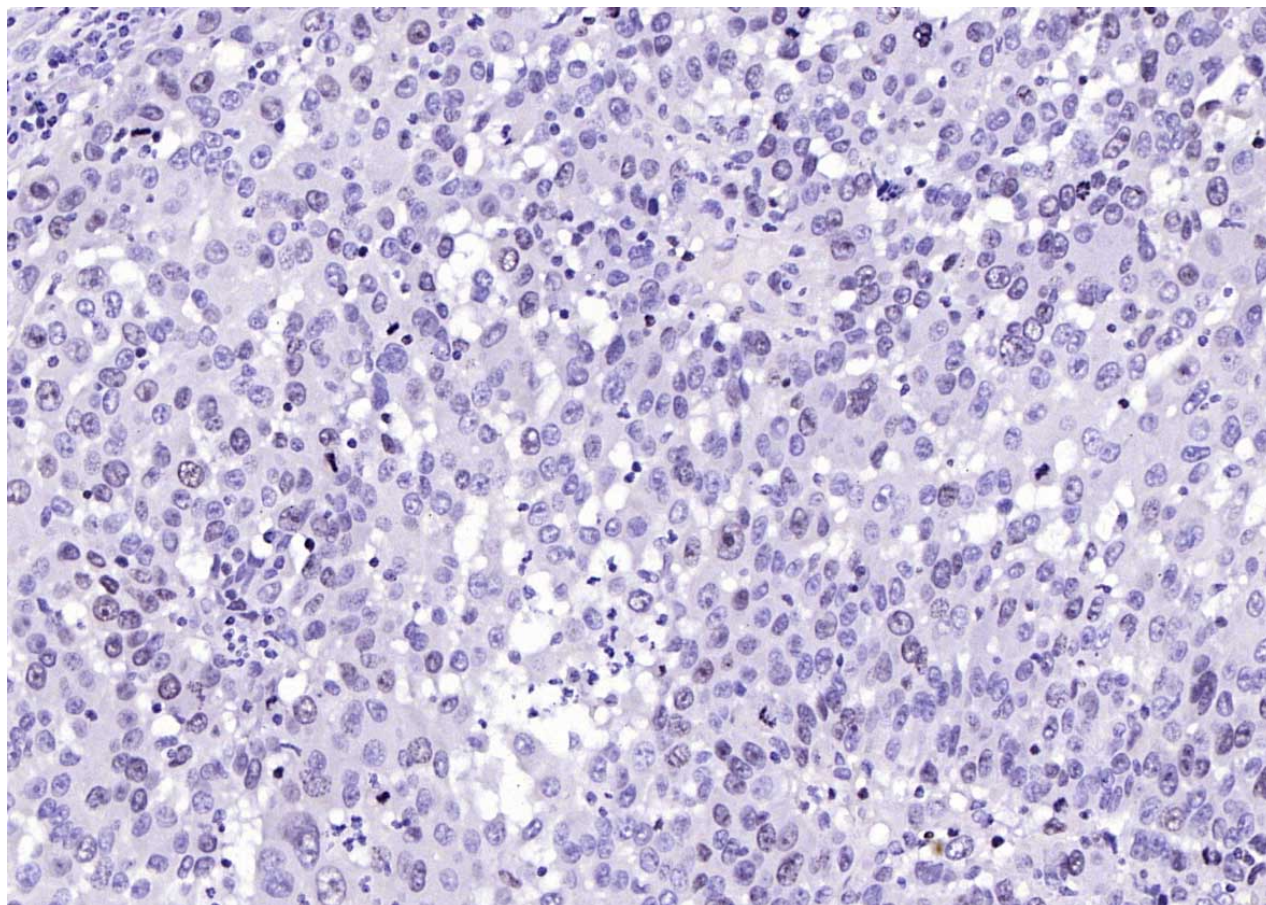
SUPPORT@GENUINBIOTECH.COM  
TEL: +1-540-855-7041

**ORDERS**

SALES@GENUINBIOTECH.COM  
FAX: +1-540-855-7041

[WWW.GENUINBIOTECH.COM](http://WWW.GENUINBIOTECH.COM)

Western blotting analysis using anti-Ki-67 antibody (Cat#52514). Total lysates (30 µg) were loaded and separated by SDS-PAGE. The blot was incubated with anti-Ki-67 antibody (Cat#52514, 1:2,500) and HRP-conjugated goat anti-rabbit secondary antibody (Cat#201, 1:20,000) respectively. Image was developed using FeQ™ ECL Substrate Kit (Cat#226).



Paraformaldehyde-fixed, paraffin embedded Human Lung Cancer; Antigen retrieval by boiling in sodium citrate buffer (pH6.0) for 15 min; Antibody incubation with Ki-67 antibody, Unconjugated at 1:200 overnight at 4°C.