

Catalog #: 52515

Aliases

KANK1; KN Motif And Ankyrin Repeat Domains 1; KANK; Kidney Ankyrin Repeat-Containing Protein; KIAA0172; ANKRD15; KN Motif And Ankyrin Repeat Domain-Containing Protein 1; Ankyrin Repeat Domain-Containing Protein 15; Ankyrin Repeat Domain 15; CPSQ2

Background

Gene Name: KANK1

NCBI Gene Entry: [23189](#)

UniProt Entry: [Q14678](#)

Application Information

Molecular Weight: Predicted, 147 kDa; observed, 147 kDa

Clonality: Rabbit polyclonal antibody

Species Reactivity: Human

Applications Tested: Western blotting (WB)

Immunogen

A synthesized peptide derived from human KANK1

Isotype

Rabbit IgG

Storage Buffer

Supplied in PBS (pH 7.3) containing 30% glycerol, and 0.01% sodium azide.

Storage

Store at -20 °C for one year.

Recommended Dilutions

Western Blotting (WB): 1:500-1:2,500

Note: This product is for research use only.

Validation Data

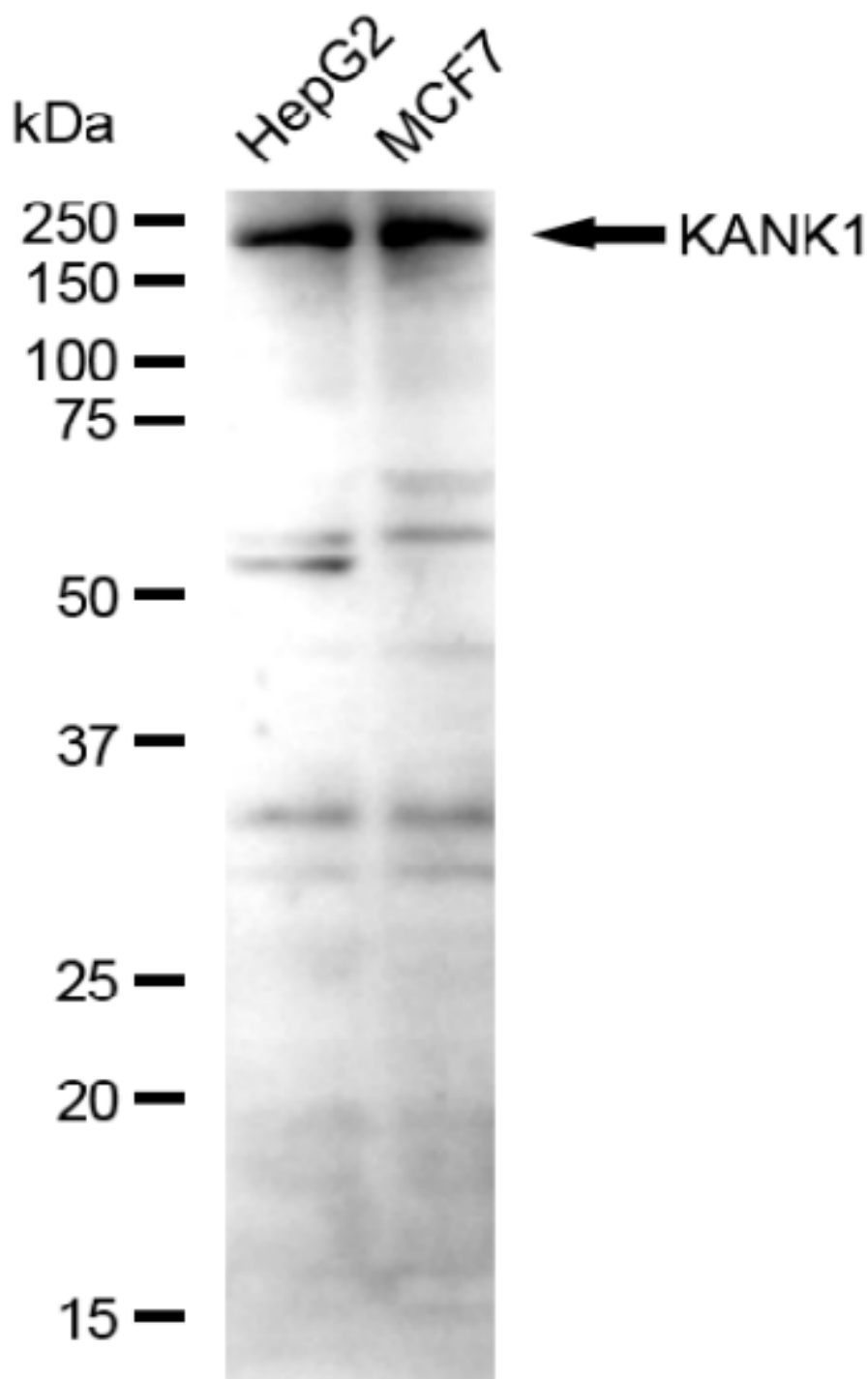
SUPPORT

SUPPORT@GENUINBIOTECH.COM
TEL: +1-540-855-7041

ORDERS

SALES@GENUINBIOTECH.COM
FAX: +1-540-855-7041

WWW.GENUINBIOTECH.COM



Copyright ©2025 Genuin Biotechnologies LLC

Western blotting analysis using anti-KANK1 antibody (Cat#52515). Total lysates (30 μ g) were loaded and separated by SDS-PAGE. The blot was incubated with anti-KANK1 antibody (Cat#52515, 1:2,500) and HRP-conjugated goat anti-rabbit secondary antibody (Cat#201, 1:20,000) respectively. Image was developed using FeQ™ ECL Substrate Kit (Cat#226).

SUPPORT

SUPPORT@GENUINBIOTECH.COM
TEL: +1-540-855-7041

ORDERS

SALES@GENUINBIOTECH.COM
FAX: +1-540-855-7041

WWW.GENUINBIOTECH.COM