

## Catalog #: 52519

### Aliases

GLP1R; Glucagon Like Peptide 1 Receptor; GLP-1R; Glucagon-Like Peptide 1 Receptor; GLP-1 Receptor; GLP-1-R; Seven Transmembrane Helix Receptor; GLP1 Receptor; GLP-1

### Background

Gene Name: GLP1R

NCBI Gene Entry: [2740](#)

UniProt Entry: [P43220](#)

### Application Information

Molecular Weight: Predicted, 53 kDa; observed, 53 kDa

Clonality: Rabbit polyclonal antibody

Species Reactivity: Human, mouse, rat

Applications Tested: Western blotting (WB), immunocytochemistry (IC)

### Immunogen

A synthesized peptide derived from human GLP1R

### Isotype

Rabbit IgG

### Storage Buffer

Supplied in PBS containing 50% glycerol, 0.2% BSA and 0.01% sodium azide.

### Storage

Store at -20 °C for one year.

### Recommended Dilutions

Western Blotting (WB): 1:500-1:2,000

Immunocytochemistry (IC): 1:200-1:1,000

**Note:** This product is for research use only.

### Validation Data

---

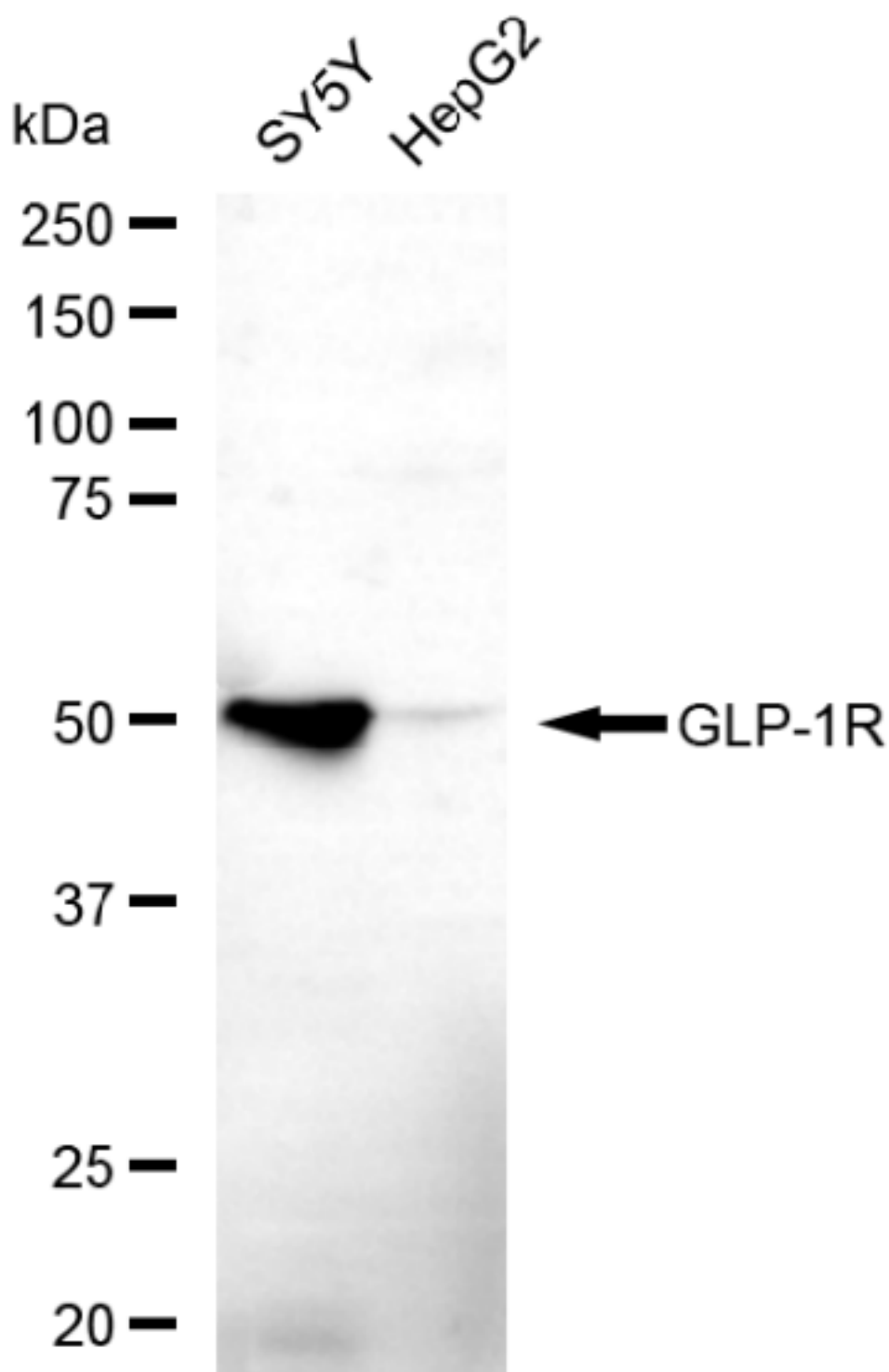
#### SUPPORT

SUPPORT@GENUINBIOTECH.COM  
TEL: +1-540-855-7041

#### ORDERS

SALES@GENUINBIOTECH.COM  
FAX: +1-540-855-7041

[WWW.GENUINBIOTECH.COM](http://WWW.GENUINBIOTECH.COM)



Copyright ©2025 Genuin Biotechnologies LLC

Western blotting analysis using anti-GLP1R antibody (Cat#52519). Total lysates (30  $\mu$ g) were loaded and separated by SDS-PAGE. The blot was incubated with anti-GLP1R antibody (Cat#52519, 1:2,500) and HRP-conjugated goat anti-rabbit secondary antibody (Cat#201, 1:20,000) respectively. Image was developed using FeQ™ ECL Substrate Kit (Cat#226).

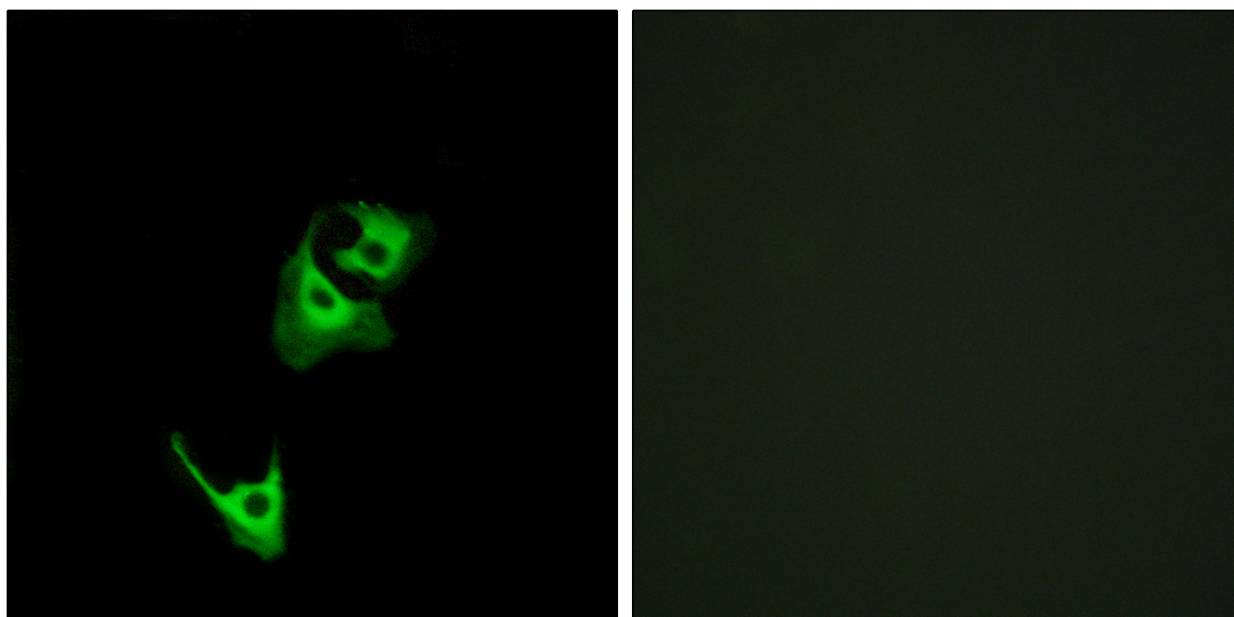
**SUPPORT**

SUPPORT@GENUINBIOTECH.COM  
TEL: +1-540-855-7041

**ORDERS**

SALES@GENUINBIOTECH.COM  
FAX: +1-540-855-7041

**WWW.GENUINBIOTECH.COM**



Immunocytochemical analysis of HeLa cells, using GLP1R antibody. The picture on the right is blocked with the synthesized peptide.

---

### SUPPORT

SUPPORT@GENUINBIOTECH.COM  
TEL: +1-540-855-7041

### ORDERS

SALES@GENUINBIOTECH.COM  
FAX: +1-540-855-7041

[WWW.GENUINBIOTECH.COM](http://WWW.GENUINBIOTECH.COM)