

Catalog #: 52522

Aliases

IFNG; Interferon Gamma; Immune Interferon; IFN-Gamma; IMD69; IFG; IFI

Background

Gene Name: IFNG

NCBI Gene Entry: [3458](#)

UniProt Entry: [P01579](#)

Application Information

Molecular Weight: Predicted, 19 kDa, observed, 17 kDa

Clonality: Rabbit polyclonal antibody

Species Reactivity: Human, mouse, rat

Applications Tested: Western blotting (WB), immunohistochemistry (IHC), immunocytochemistry (IC)

Immunogen

A synthesized peptide derived from human IFN-gamma

Isotype

Rabbit IgG

Storage Buffer

Supplied in PBS containing 50% glycerol, 0.2% BSA and 0.01% sodium azide.

Storage

Store at -20 °C for one year.

Recommended Dilutions

Western Blotting (WB): 1:500-1:2,000

Immunohistochemistry (IHC): 1:100-1:300

Immunocytochemistry (IC): 1:50-1:200

Note: This product is for research use only.

Validation Data

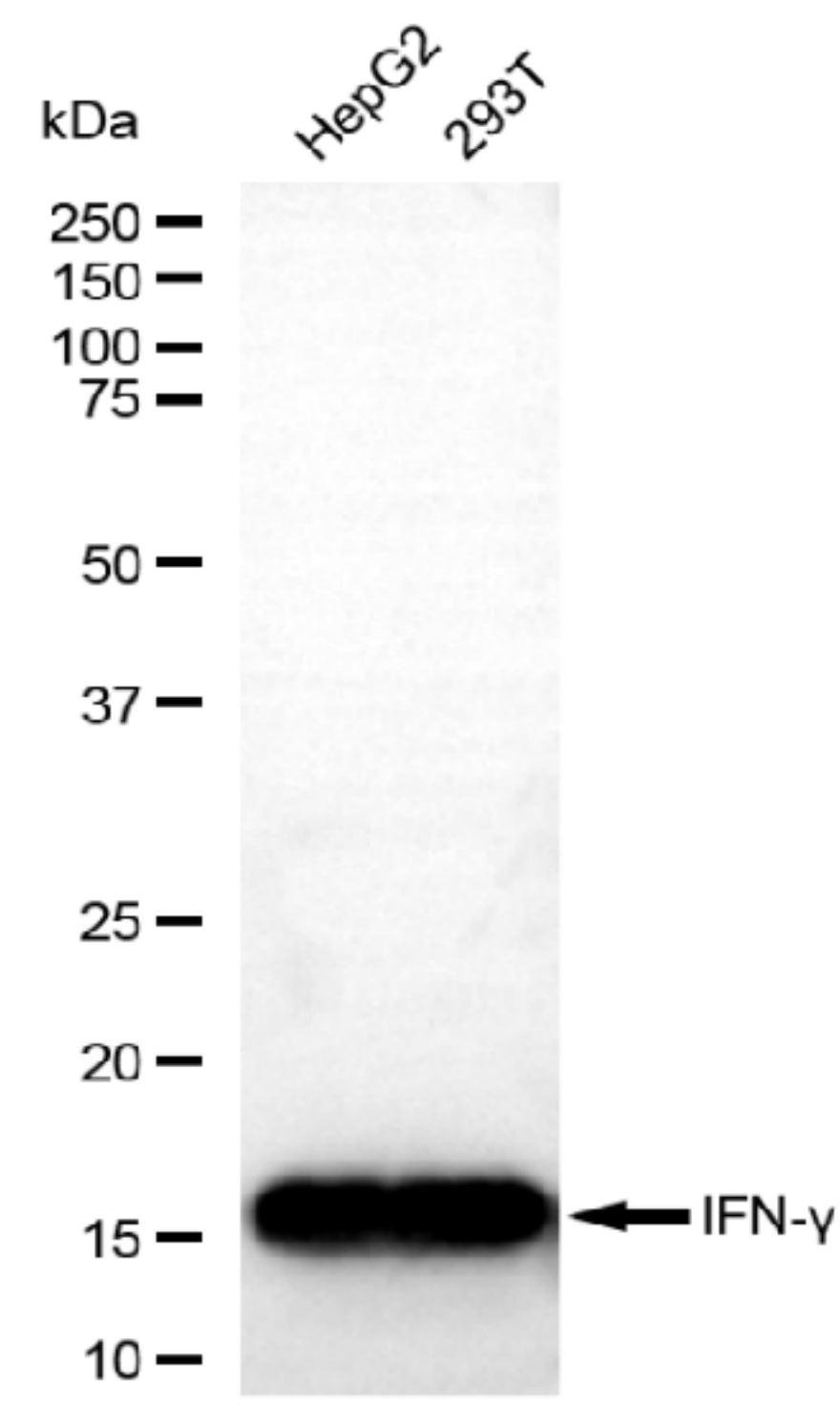
SUPPORT

SUPPORT@GENUINBIOTECH.COM
TEL: +1-540-855-7041

ORDERS

SALES@GENUINBIOTECH.COM
FAX: +1-540-855-7041

WWW.GENUINBIOTECH.COM



Copyright ©2025 Genuin Biotechnologies LLC

Western blotting analysis using anti-IFNG antibody (Cat#52522). Total lysates (30 μ g) were loaded and separated by SDS-PAGE. The blot was incubated with anti-IFNG antibody (Cat#52522, 1:2,500) and HRP-conjugated goat anti-rabbit secondary antibody (Cat#201, 1:20,000) respectively. Image was developed using FeQ™ ECL Substrate Kit (Cat#226).

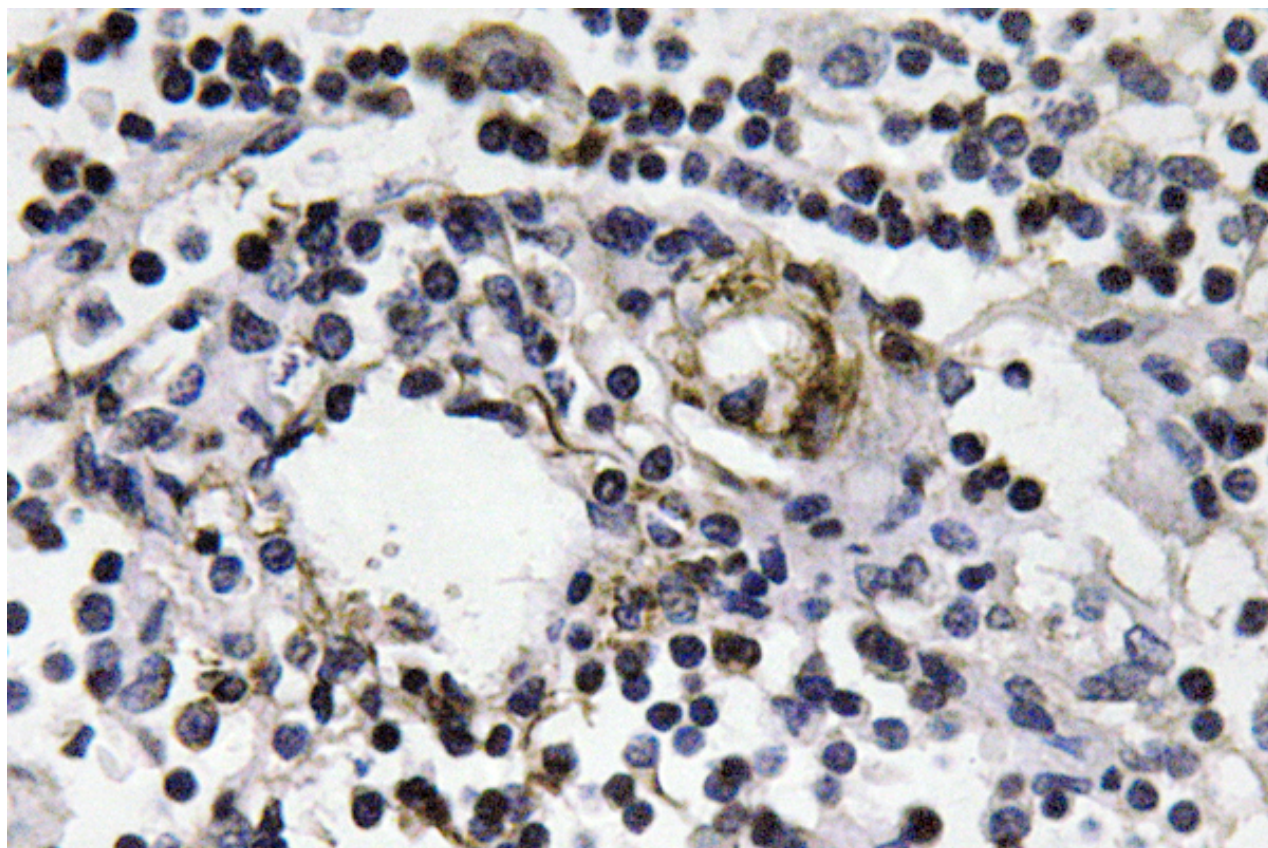
SUPPORT

SUPPORT@GENUINBIOTECH.COM
TEL: +1-540-855-7041

ORDERS

SALES@GENUINBIOTECH.COM
FAX: +1-540-855-7041

WWW.GENUINBIOTECH.COM



Immunohistochemistry analysis of IFNG antibody in paraffin-embedded human lymph node tissue.