

## Catalog #: 52526

### Aliases

KLF13; KLF Transcription Factor 13; RFLAT-1; BTEB3; NSLP1; Novel Sp1-Like Zinc Finger Transcription Factor 1; Transcription Factor BTEB3; Transcription Factor NSLP1; Krueppel-Like Factor 13; Kruppel Like Factor 13; BTE-Binding Protein 3; FKLF-2; RANTES Factor Of Late Activated T Lymphocytes-1; RANTES Factor Of Late Activated T-Lymphocytes 1; Basic Transcription Element Binding Protein 3; Basic Transcription Element-Binding Protein 3; RFLAT1; FKLF2

### Background

Gene Name: KLF13

NCBI Gene Entry: [51621](#)

UniProt Entry: [Q9Y2Y9](#)

### Application Information

Molecular Weight: Predicted, 31 kDa; observed, 31 kDa

Clonality: Rabbit polyclonal antibody

Species Reactivity: Human, mouse

Applications Tested: Western blotting (WB), immunohistochemistry (IHC), immunocytochemistry (IC)

### Immunogen

A synthesized peptide derived from human KLF13

### Isotype

Rabbit IgG

### Storage Buffer

Supplied in PBS containing 50% glycerol, 0.5% BSA and 0.02% sodium azide.

### Storage

Store at -20 °C for one year.

### Recommended Dilutions

Western Blotting (WB): 1:500-1:2,000

Immunohistochemistry (IHC): 1:100-1:300

Immunocytochemistry (IC): 1:50-1:200

---

#### SUPPORT

SUPPORT@GENUINBIOTECH.COM  
TEL: +1-540-855-7041

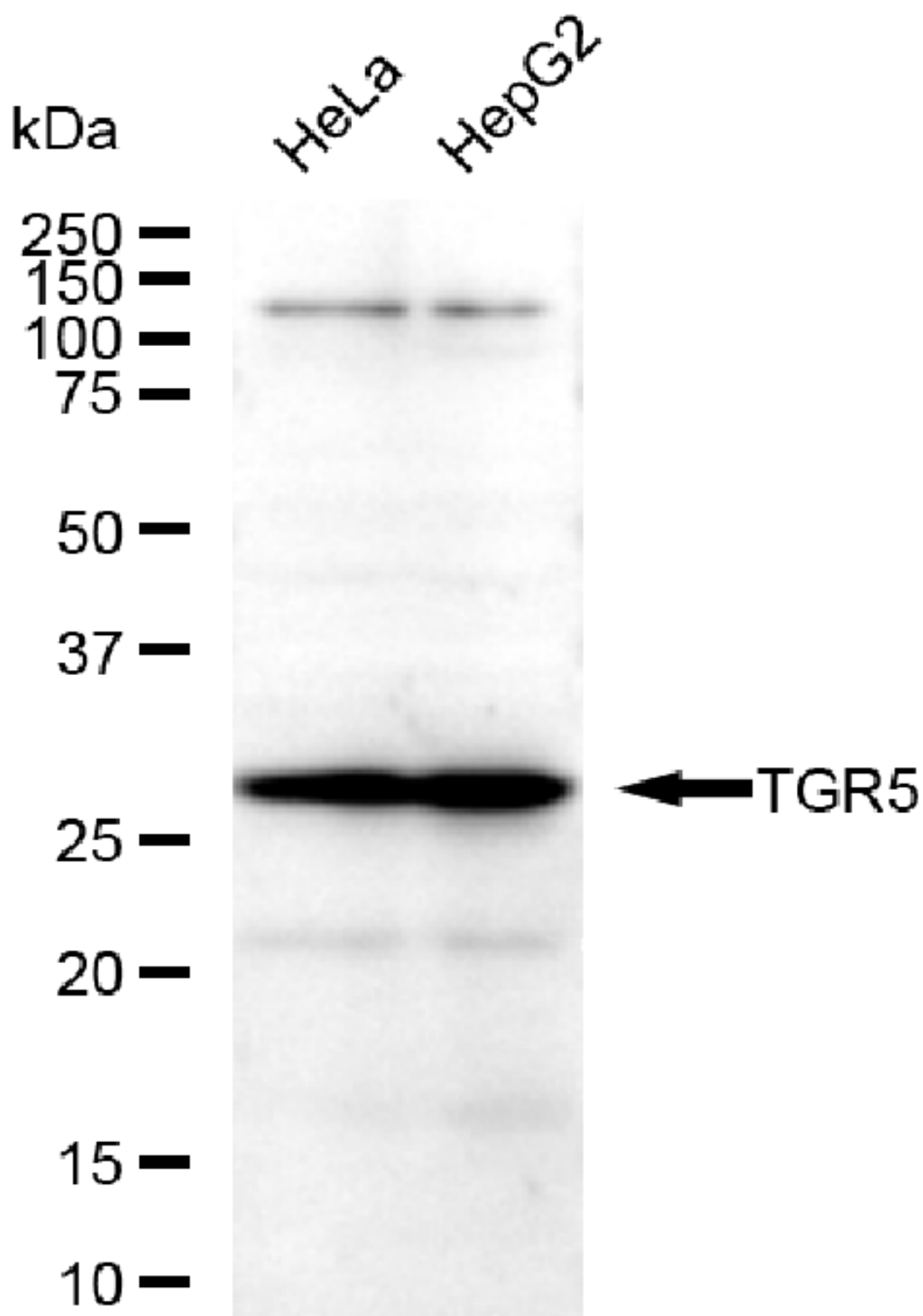
#### ORDERS

SALES@GENUINBIOTECH.COM  
FAX: +1-540-855-7041

[WWW.GENUINBIOTECH.COM](http://WWW.GENUINBIOTECH.COM)

**Note:** This product is for research use only.

## Validation Data



Copyright ©2025 Genuin Biotechnologies LLC

### SUPPORT

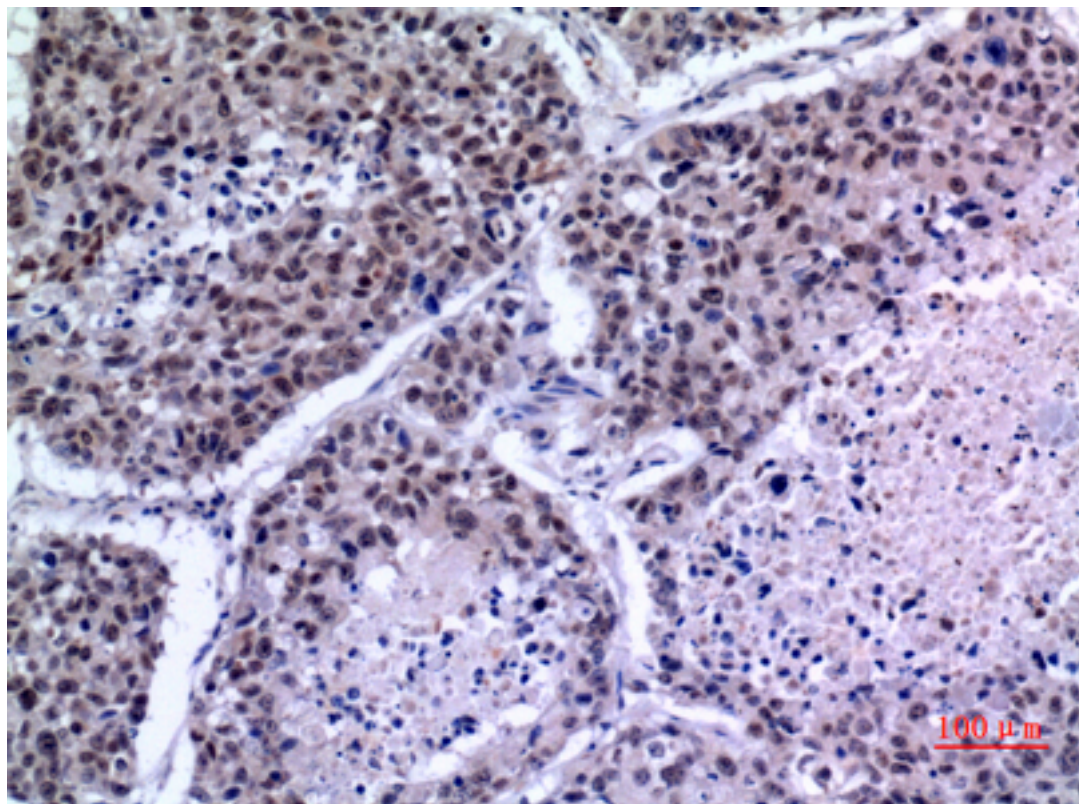
SUPPORT@GENUINBIOTECH.COM  
TEL: +1-540-855-7041

### ORDERS

SALES@GENUINBIOTECH.COM  
FAX: +1-540-855-7041

WWW.GENUINBIOTECH.COM

Western blotting analysis using anti-KLF13 antibody (Cat#52526). Total lysates (30 µg) were loaded and separated by SDS-PAGE. The blot was incubated with anti-KLF13 antibody (Cat#52526, 1:2,500) and HRP-conjugated goat anti-rabbit secondary antibody (Cat#201, 1:20,000) respectively. Image was developed using FeQ™ ECL Substrate Kit (Cat#226).



Immunohistochemical analysis of paraffin-embedded human-lung, antibody was diluted at 1:100.