

Catalog #: 52528

Aliases

DUSP14; Dual Specificity Phosphatase 14; MKP-L; MKP6; Mitogen-Activated Protein Kinase Phosphatase 6; Dual Specificity Protein Phosphatase 14; MKP-1-Like Protein Tyrosine Phosphatase; MAP Kinase Phosphatase 6; MKP-6; MKP-1 Like Protein Tyrosine Phosphatase; EC 3.1.3.16; EC 3.1.3.48

Background

Gene Name: DUSP14

NCBI Gene Entry: [11072](#)

UniProt Entry: [O95147](#)

Application Information

Molecular Weight: Predicted, 22 kDa; observed, 21 kDa

Clonality: Rabbit polyclonal antibody

Species Reactivity: Human, mouse

Applications Tested: Western blotting (WB)

Immunogen

A synthesized peptide derived from human DUSP14

Isotype

Rabbit IgG

Storage Buffer

Supplied in PBS containing 50% glycerol, and 0.02% sodium azide.

Storage

Store at -20 °C for one year.

Recommended Dilutions

Western Blotting (WB): 1:500-1:2,000

Note: This product is for research use only.

Validation Data

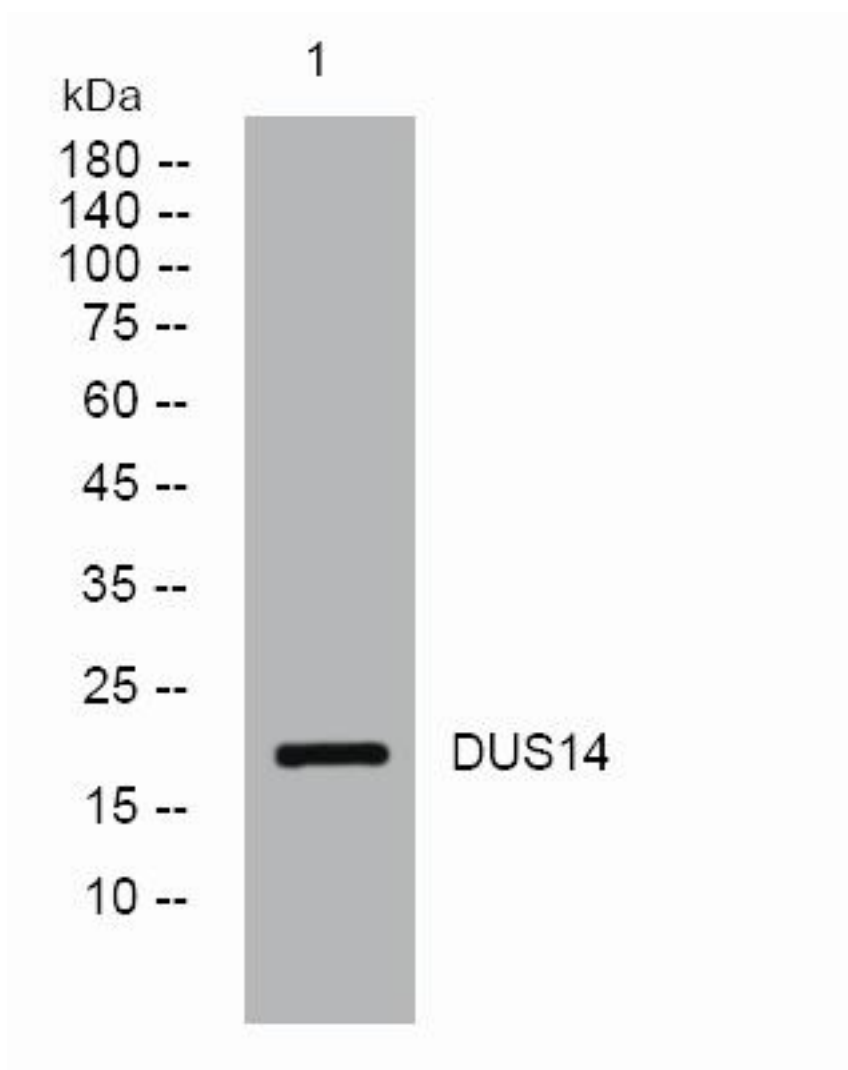
SUPPORT

SUPPORT@GENUINBIOTECH.COM
TEL: +1-540-855-7041

ORDERS

SALES@GENUINBIOTECH.COM
FAX: +1-540-855-7041

WWW.GENUINBIOTECH.COM



Western blotting analysis of lysates from DU145 cells, primary antibody was diluted at 1:1,000, 4°C over night.