

## Catalog #: 52532

### Aliases

PIK3R1; Phosphoinositide-3-Kinase Regulatory Subunit 1; GRB1; P85-ALPHA; P85alpha; P85; Phosphatidylinositol 3-Kinase 85 KDa Regulatory Subunit Alpha; Phosphoinositide-3-Kinase, Regulatory Subunit 1 (Alpha); Phosphatidylinositol 3-Kinase Regulatory Subunit Alpha; Phosphoinositide-3-Kinase Regulatory Subunit Alpha; PtdIns-3-Kinase Regulatory Subunit Alpha; Growth Factor Receptor Bound 1; PI3K Regulatory Subunit Alpha; PI3-Kinase Subunit P85-Alpha; PI3 Kinase-Associated P85; Phosphatidylinositol 3-Kinase, Regulatory Subunit, Polypeptide 1 (P85 Alpha); Phosphatidylinositol 3-Kinase-Associated P-85 Alpha; PtdIns-3-Kinase Regulatory Subunit P85-Alpha; PI3-Kinase Regulatory Subunit Alpha; IMD36; AGM7

### Background

Gene Name: PIK3R1

NCBI Gene Entry: [5295](#)

UniProt Entry: [P27986](#)

### Application Information

Molecular Weight: Predicted, 84 kDa; observed, 85 kDa

Clonality: Rabbit polyclonal antibody

Species Reactivity: Human, mouse, rat

Applications Tested: Western blotting (WB), immunohistochemistry (IHC), immunocytochemistry (IC)

### Immunogen

A synthesized peptide derived from human PI3-kinase p85-alpha

### Isotype

Rabbit IgG

### Storage Buffer

Supplied in PBS containing 50% glycerol, 0.5% BSA and 0.02% sodium azide.

### Storage

Store at -20 °C for one year.

### Recommended Dilutions

Western Blotting (WB): 1:500-1:2,000

---

#### SUPPORT

SUPPORT@GENUINBIOTECH.COM  
TEL: +1-540-855-7041

#### ORDERS

SALES@GENUINBIOTECH.COM  
FAX: +1-540-855-7041

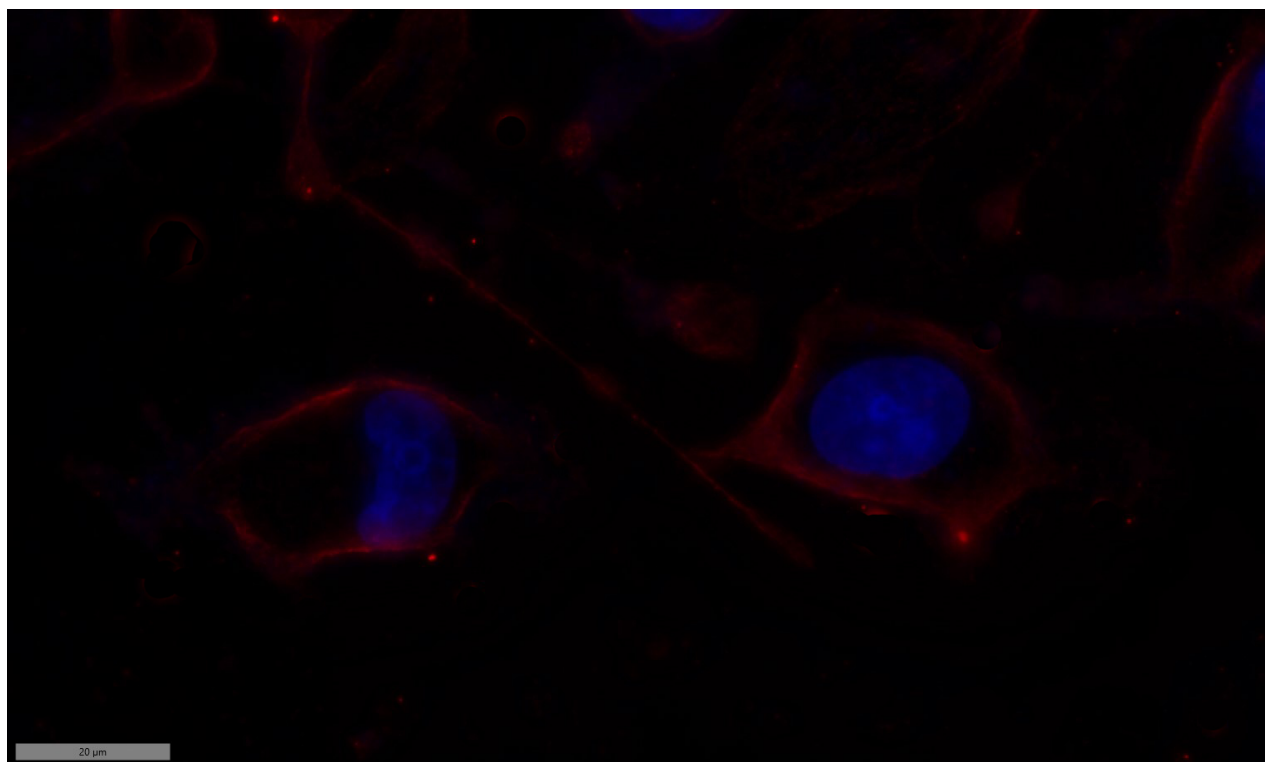
#### WWW.GENUINBIOTECH.COM

Immunohistochemistry (IHC): 1:100-1:300

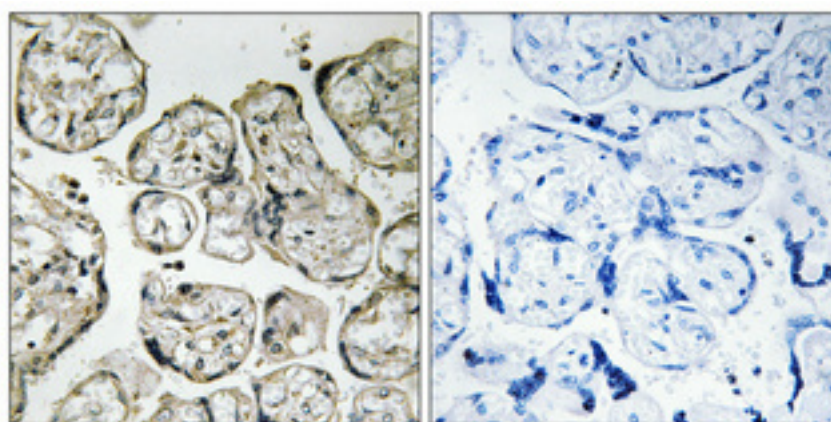
Immunocytochemistry (IC): 1:200-1:1,000

**Note:** This product is for research use only.

## Validation Data



Immunocytochemical analysis of MCF7 cell. Primary antibody was diluted at 1:100 (4°C overnight). AF594-Conjugated goat anti-rabbit IgG (H&L) secondary antibody was diluted at 1:500 (room temperature, 50min).



Immunohistochemical analysis of paraffin-embedded Human placenta. Antibody was diluted at 1:100 (4°C overnight). High-pressure and temperature Tris-EDTA, pH 8.0 was used for antigen

### SUPPORT

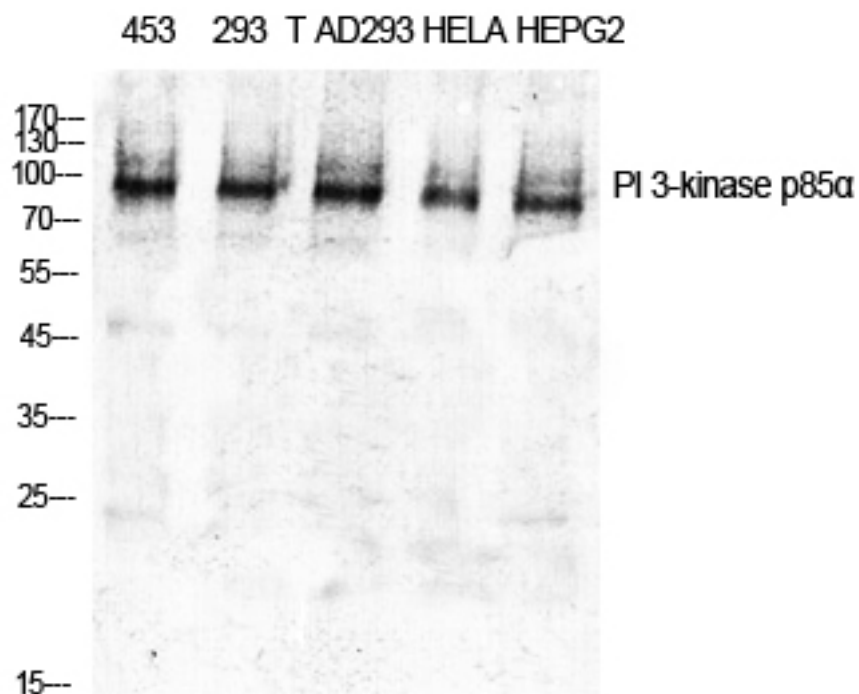
SUPPORT@GENUINBIOTECH.COM  
TEL: +1-540-855-7041

### ORDERS

SALES@GENUINBIOTECH.COM  
FAX: +1-540-855-7041

[WWW.GENUINBIOTECH.COM](http://WWW.GENUINBIOTECH.COM)

retrieval. Negative control (right) obtained from antibody was pre-absorbed by immunogen peptide.



Western blotting analysis of various cells using PIK3R1 antibody diluted at 1:1,000.