

Catalog #: 52536

Aliases

TREM2; Triggering Receptor Expressed On Myeloid Cells 2; TREM-2; Trem2a; Trem2b; Trem2c; Triggering Receptor Expressed On Myeloid Cells 2a; Triggering Receptor Expressed On Monocytes 2; PLOSL2; AD17

Background

Gene Name: TREM2

NCBI Gene Entry: [54209](#)

UniProt Entry: [Q9NZC2](#)

Application Information

Molecular Weight: Predicted, 25 kDa; observed, 25 kDa

Clonality: Rabbit polyclonal antibody

Species Reactivity: Human, mouse

Applications Tested: Western blotting (WB)

Immunogen

A synthesized peptide derived from human TREM2

Isotype

Rabbit IgG

Storage Buffer

Supplied in PBS containing 50% glycerol, and 0.02% sodium azide.

Storage

Store at -20 °C for one year.

Recommended Dilutions

Western Blotting (WB): 1:500-1:2,000

Note: This product is for research use only.

Validation Data

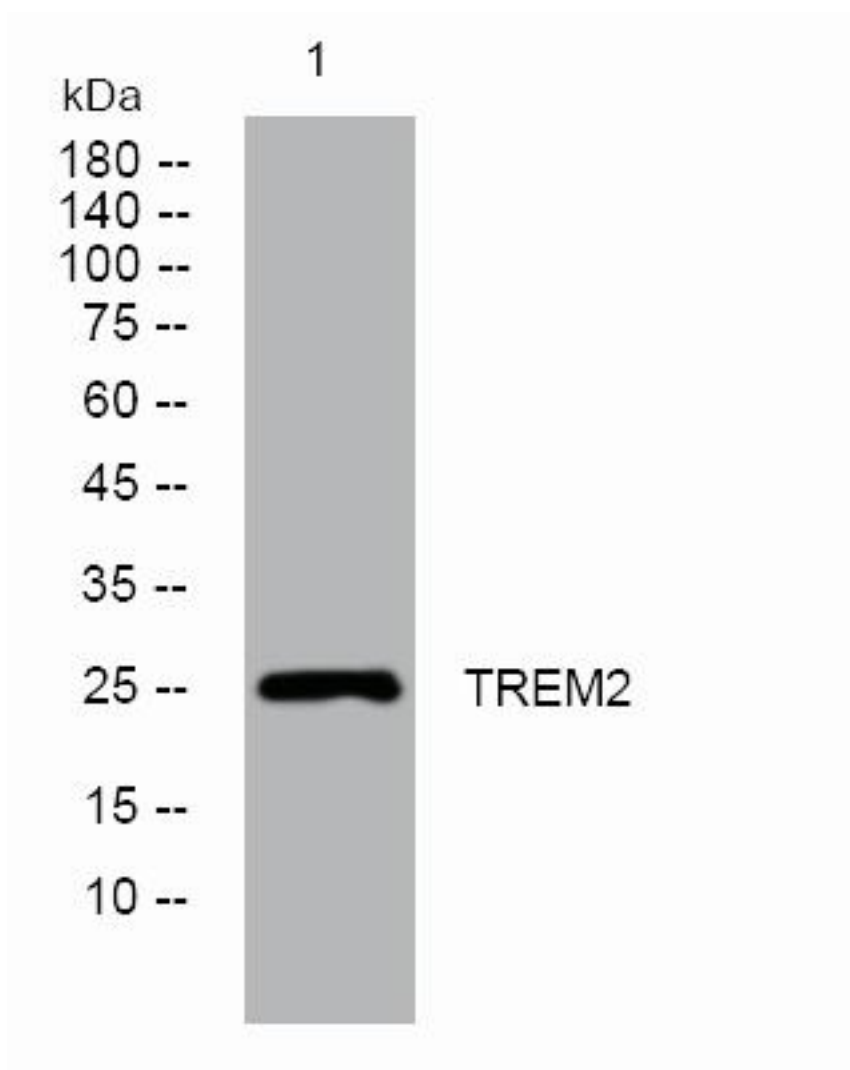
SUPPORT

SUPPORT@GENUINBIOTECH.COM
TEL: +1-540-855-7041

ORDERS

SALES@GENUINBIOTECH.COM
FAX: +1-540-855-7041

WWW.GENUINBIOTECH.COM



Western blotting analysis of lysates from DU145 cells, primary antibody was diluted at 1:1,000, 4°over night.