

## Catalog #: 52537

### Aliases

ABCG2; ATP Binding Cassette Subfamily G Member 2 (JR Blood Group); BCRP; ABCP; MXR; EST157481; CD338; ATP-Binding Cassette, Sub-Family G (WHITE), Member 2 (Junior Blood Group); Broad Substrate Specificity ATP-Binding Cassette Transporter ABCG2; ATP Binding Cassette Subfamily G Member 2 (Junior Blood Group); Placenta-Specific ATP-Binding Cassette Transporter; Mitoxantrone Resistance-Associated Protein; Breast Cancer Resistance Protein; Urate Exporter; CDw338; BCRP1; Broad Substrate Specificity ATP-Binding Cassette Transporter ABCG2 Isoform 1 (Junior Blood Group); Multi Drug Resistance Efflux Transport ATP-Binding Cassette Sub-Family G (WHITE) Member; ATP-Binding Cassette, Sub-Family G (WHITE), Member 2; ATP-Binding Cassette Sub-Family G Member 2; ATPbinding Cassette Transporter ABCG2; ATP-Binding Cassette Transporter G2; Placenta Specific MDR Protein; ABC Transporter; CD338 Antigen; EC 7.6.2.2; CDw388; UAQTL1; ABC15; GOUT1; MXR-1; BMDP; MXR1; MRX

### Background

Gene Name: ABCG2

NCBI Gene Entry: [9429](#)

UniProt Entry: [Q9UNQ0](#)

### Application Information

Molecular Weight: Predicted, 72 kDa; observed, 72 kDa

Clonality: Rabbit polyclonal antibody

Species Reactivity: Human, mouse, rat

Applications Tested: Western blotting (WB), immunohistochemistry (IHC), immunocytochemistry (IC)

### Immunogen

A synthesized peptide derived from human ABCG2

### Isotype

Rabbit IgG

### Storage Buffer

Supplied in PBS containing 50% glycerol, 0.5% BSA and 0.02% sodium azide.

### Storage

---

#### SUPPORT

SUPPORT@GENUINBIOTECH.COM  
TEL: +1-540-855-7041

#### ORDERS

SALES@GENUINBIOTECH.COM  
FAX: +1-540-855-7041

[WWW.GENUINBIOTECH.COM](http://WWW.GENUINBIOTECH.COM)

Store at -20 °C for one year.

## Recommended Dilutions

Western Blotting (WB): 1:500-1:2,000

Immunohistochemistry (IHC): 1:100-1:300

Immunocytochemistry (IC): 1:100-1:300

**Note:** This product is for research use only.

## Validation Data

---

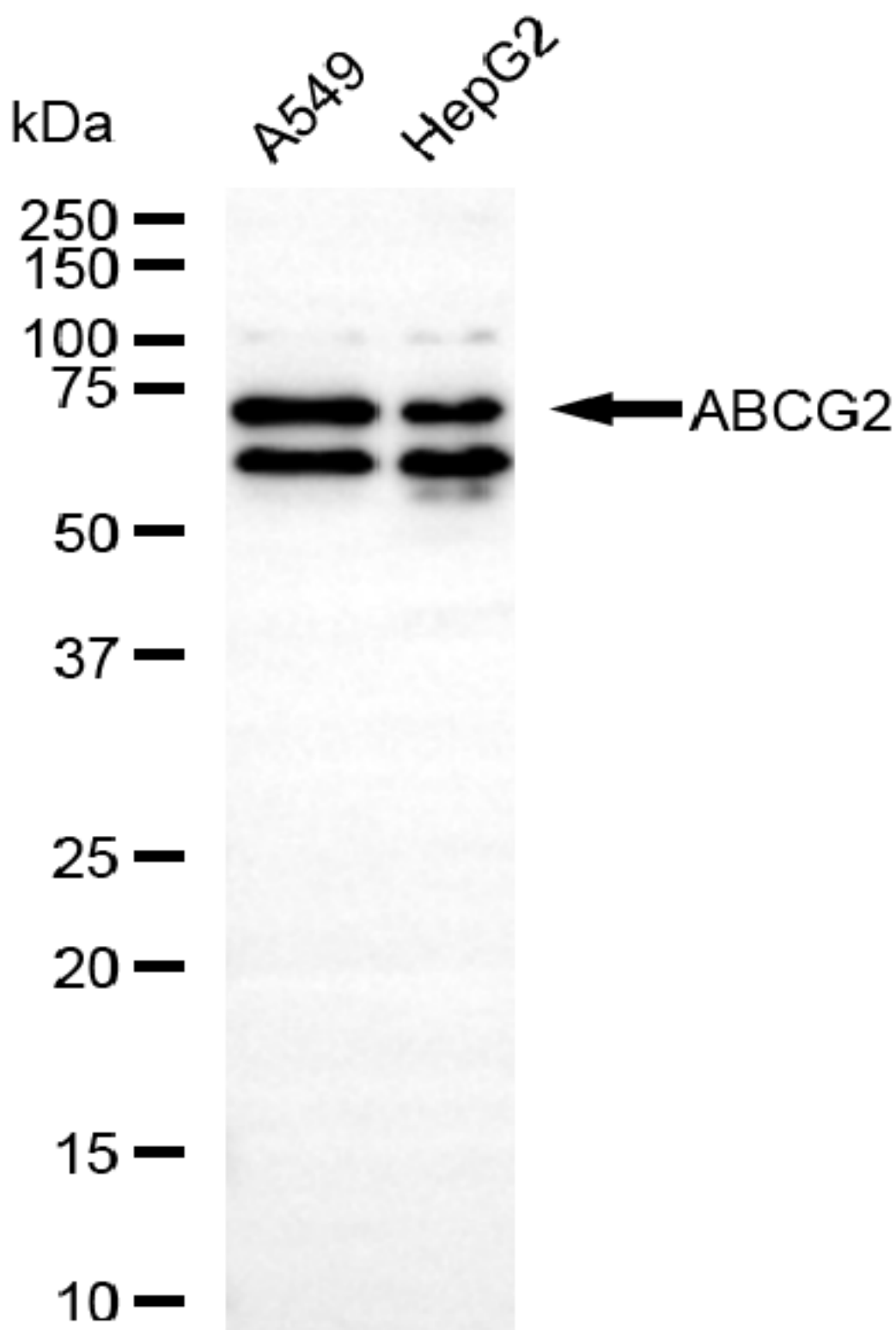
### SUPPORT

SUPPORT@GENUINBIOTECH.COM  
TEL: +1-540-855-7041

### ORDERS

SALES@GENUINBIOTECH.COM  
FAX: +1-540-855-7041

[WWW.GENUINBIOTECH.COM](http://WWW.GENUINBIOTECH.COM)



Copyright ©2025 Genuin Biotechnologies LLC

Western blotting analysis using anti-ABCG2 antibody (Cat#52537). Total lysates (30  $\mu$ g) were loaded and separated by SDS-PAGE. The blot was incubated with anti-ABCG2 antibody (Cat#52537, 1:2,500) and HRP-conjugated goat anti-rabbit secondary antibody (Cat#201, 1:20,000) respectively. Image was developed using FeQ™ ECL Substrate Kit (Cat#226).

**SUPPORT**

SUPPORT@GENUINBIOTECH.COM  
TEL: +1-540-855-7041

**ORDERS**

SALES@GENUINBIOTECH.COM  
FAX: +1-540-855-7041

**WWW.GENUINBIOTECH.COM**

---

**SUPPORT**

SUPPORT@GENUINBIOTECH.COM  
TEL: +1-540-855-7041

**ORDERS**

SALES@GENUINBIOTECH.COM  
FAX:+1-540-855-7041

**WWW.GENUINBIOTECH.COM**