

Catalog #: 52541

Aliases

CLEC5A; C-Type Lectin Domain Containing 5A; MDL-1; C-Type Lectin Domain Family 5 Member A; CLECSF5; C-Type (Calcium Dependent, Carbohydrate-Recognition Domain) Lectin, Superfamily Member 5; C-Type Lectin Superfamily Member 5; MDL1; C-Type Lectin Domain Family 5, Member A; Myeloid DAP12-Associating Lectin-1; Myeloid DAP12-Associating Lectin 1

Background

Gene Name: CLEC5A

NCBI Gene Entry: [23601](#)

UniProt Entry: [Q9NY25](#)

Application Information

Molecular Weight: Predicted, 22 kDa; observed, 20 kDa

Clonality: Rabbit polyclonal antibody

Species Reactivity: Human, mouse

Applications Tested: Western blotting (WB)

Immunogen

A synthesized peptide derived from human CLEC5A

Isotype

Rabbit IgG

Storage Buffer

Supplied in PBS containing 50% glycerol, and 0.02% sodium azide.

Storage

Store at -20 °C for one year.

Recommended Dilutions

Western Blotting (WB): 1:500-1:2,000

Note: This product is for research use only.

Validation Data

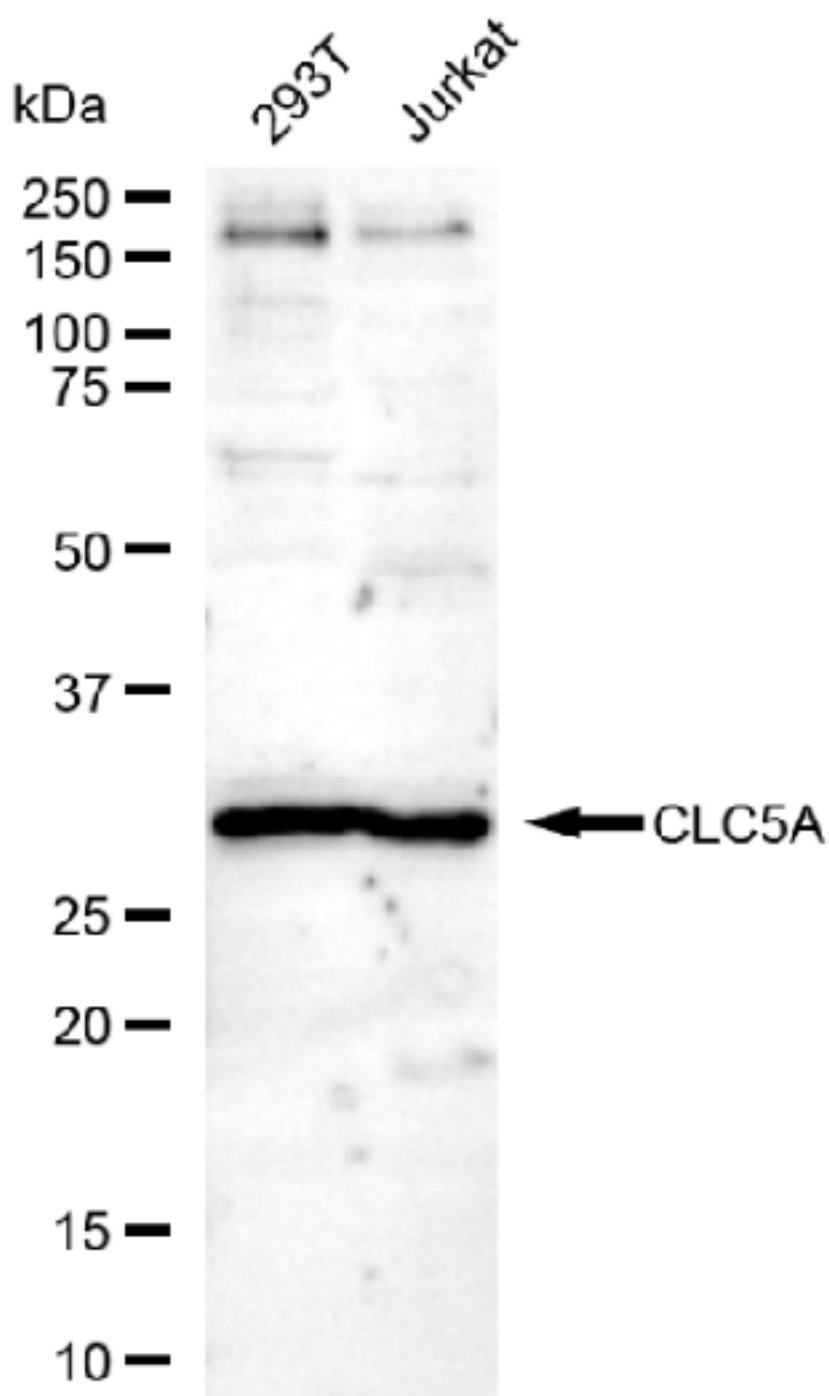
SUPPORT

SUPPORT@GENUINBIOTECH.COM
TEL: +1-540-855-7041

ORDERS

SALES@GENUINBIOTECH.COM
FAX: +1-540-855-7041

WWW.GENUINBIOTECH.COM



Copyright ©2025 Genuin Biotechnologies LLC

Western blotting analysis using anti-CLEC5A antibody (Cat#52541). Total lysates (30 µg) were loaded and separated by SDS-PAGE. The blot was incubated with anti-CLEC5A antibody (Cat#52541, 1:2,500) and HRP-conjugated goat anti-rabbit secondary antibody (Cat#201, 1:20,000) respectively. Image was developed using FeQ™ ECL Substrate Kit (Cat#226).

SUPPORT

SUPPORT@GENUINBIOTECH.COM
TEL: +1-540-855-7041

ORDERS

SALES@GENUINBIOTECH.COM
FAX: +1-540-855-7041

WWW.GENUINBIOTECH.COM