

Catalog #: 52550

Aliases

FAP; Fibroblast Activation Protein Alpha; Seprase; DPPIV; 170 KDa Melanoma Membrane-Bound Gelatinase; Gelatine Degradation Protease FAP; Integral Membrane Serine Protease; Post-Proline Cleaving Enzyme; Surface-Expressed Protease; Prolyl Endopeptidase FAP; Dipeptidyl Peptidase FAP; FAPalpha; SIMP; Fibroblast Activation Protein, Alpha; Serine Integral Membrane Protease; EC 3.4.21.26; EC 3.4.14.5; EC 3.4.21.-; FAPA

Background

Gene Name: FAP

NCBI Gene Entry: [2191](#)

UniProt Entry: [Q12884](#)

Application Information

Molecular Weight: Predicted, 88 kDa; observed, 88 kDa

Clonality: Rabbit polyclonal antibody

Species Reactivity: Human, mouse, rat

Applications Tested: Western blotting (WB), immunohistochemistry (IHC), immunocytochemistry (IC)

Immunogen

A synthesized peptide derived from human FAP

Isotype

Rabbit IgG

Storage Buffer

Supplied in PBS (pH7.3) containing 30% glycerol, and 0.01% sodium azide.

Storage

Store at -20 °C for one year.

Recommended Dilutions

Western Blotting (WB): 1:500-1:1,000

Immunohistochemistry (IHC): 1:100-1:200

Immunocytochemistry (IC): 1:100-1:500

SUPPORT

SUPPORT@GENUINBIOTECH.COM
TEL: +1-540-855-7041

ORDERS

SALES@GENUINBIOTECH.COM
FAX: +1-540-855-7041

WWW.GENUINBIOTECH.COM

Note: This product is for research use only.

Validation Data

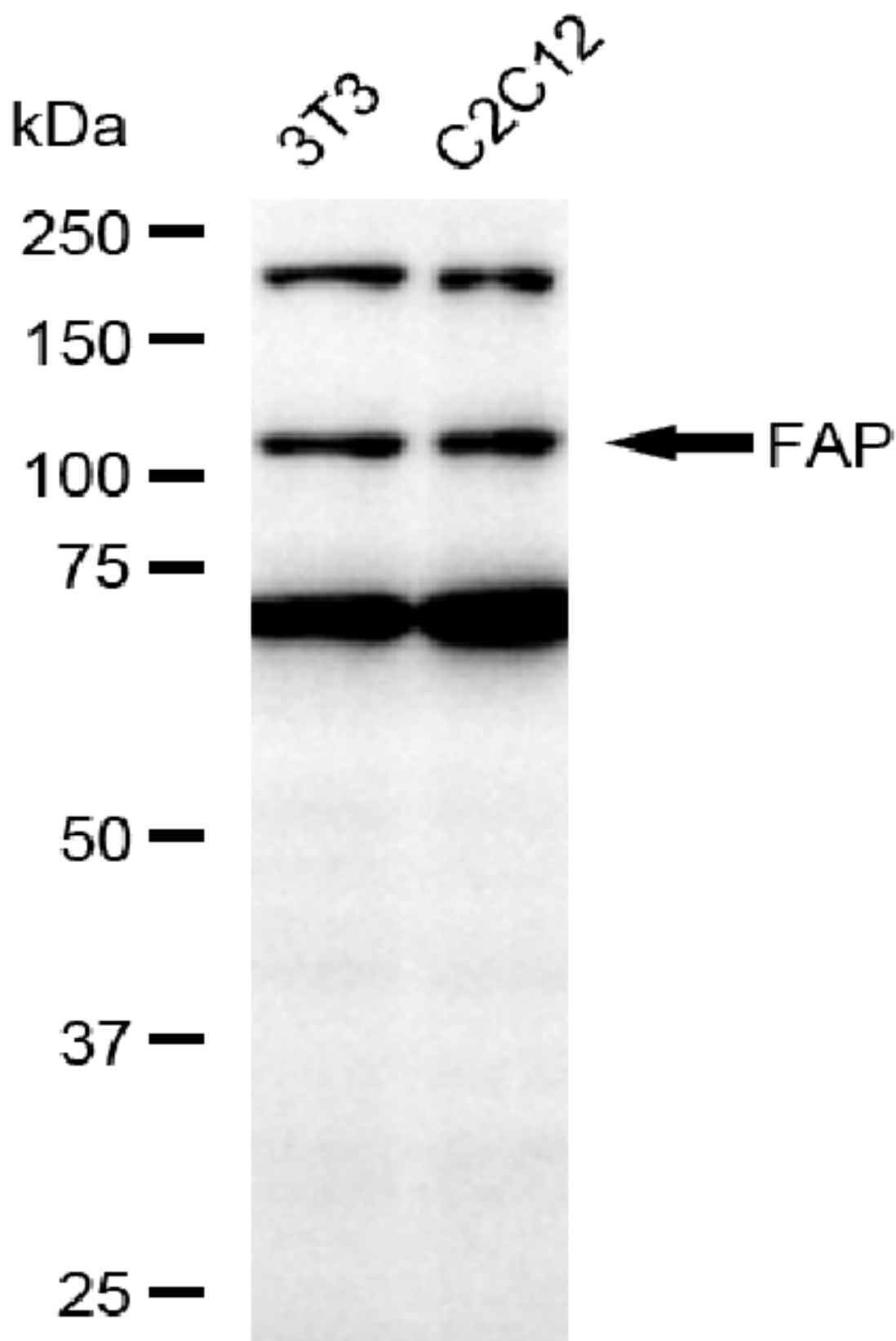
SUPPORT

SUPPORT@GENUINBIOTECH.COM
TEL: +1-540-855-7041

ORDERS

SALES@GENUINBIOTECH.COM
FAX: +1-540-855-7041

WWW.GENUINBIOTECH.COM



Copyright ©2025 Genuin Biotechnologies LLC

Western blotting analysis using anti-FAP antibody (Cat#52550). Total lysates (30 µg) were loaded

SUPPORT

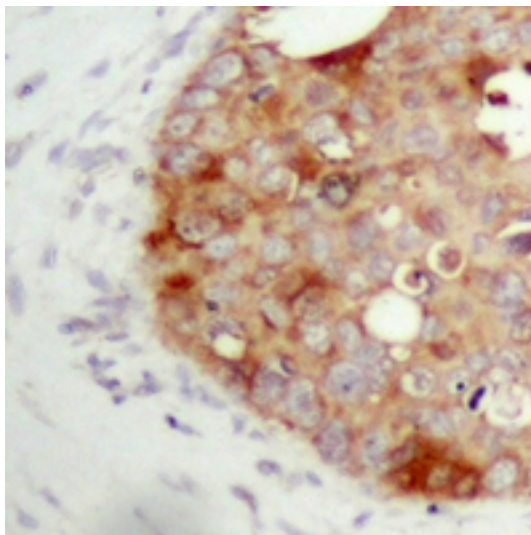
SUPPORT@GENUINBIOTECH.COM
TEL: +1-540-855-7041

ORDERS

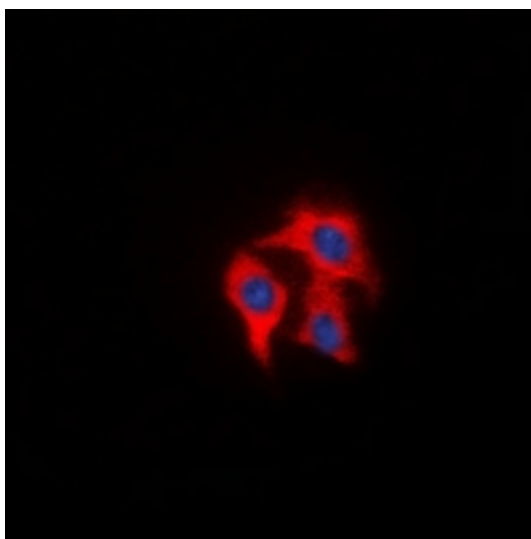
SALES@GENUINBIOTECH.COM
FAX: +1-540-855-7041

WWW.GENUINBIOTECH.COM

and separated by SDS-PAGE. The blot was incubated with anti-FAP antibody (Cat#52550, 1:2,500) and HRP-conjugated goat anti-rabbit secondary antibody (Cat#201, 1:20,000) respectively. Image was developed using FeQ™ ECL Substrate Kit (Cat#226).



Immunohistochemical analysis of FAP staining in human prostate cancer formalin fixed paraffin embedded tissue section. The section was pre-treated using heat mediated antigen retrieval with sodium citrate buffer (pH 6.0). The section was then incubated with the antibody at room temperature and detected using an HRP conjugated compact polymer system.



Immunocytochemical analysis of FAP staining in HeLa cells. Formalin-fixed cells were permeabilized with 0.1% Triton X-100 in TBS for 5-10 minutes and blocked with 3% BSA-PBS for 30 minutes at room temperature. Cells were probed with the primary antibody in 3% BSA-PBS and incubated overnight at 4 °C in a humidified chamber. Cells were washed with PBST and incubated with a DyLight 594-conjugated secondary antibody (red) in PBS at room temperature in the dark. DAPI was used to stain the cell nuclei (blue).