

Catalog #: 52552

Aliases

PER1; Period Circadian Regulator 1; RIGUI 2; PER; Period Circadian Protein Homolog 1; Circadian Clock Protein PERIOD 1; Period Circadian Clock 1; HPER1; Circadian Pacemaker Protein RIGUI; Circadian Pacemaker Protein Rigui; Period, Drosophila, Homolog Of; Period (Drosophila) Homolog 1; Period Homolog 1 (Drosophila); Period Homolog 1; KIAA0482; HPER

Background

Gene Name: PER1

NCBI Gene Entry: [5187](#)

UniProt Entry: [O15534](#)

Application Information

Molecular Weight: Predicted, 136 kDa; observed, 141 kDa

Clonality: Rabbit polyclonal antibody

Species Reactivity: Human, mouse, rat

Applications Tested: Western blotting (WB)

Immunogen

A synthesized peptide derived from human PER1

Isotype

Rabbit IgG

Storage Buffer

Supplied in PBS containing 50% glycerol, and 0.02% sodium azide.

Storage

Store at -20 °C for one year.

Recommended Dilutions

Western Blotting (WB): 1:500-1:2,000

Note: This product is for research use only.

Validation Data

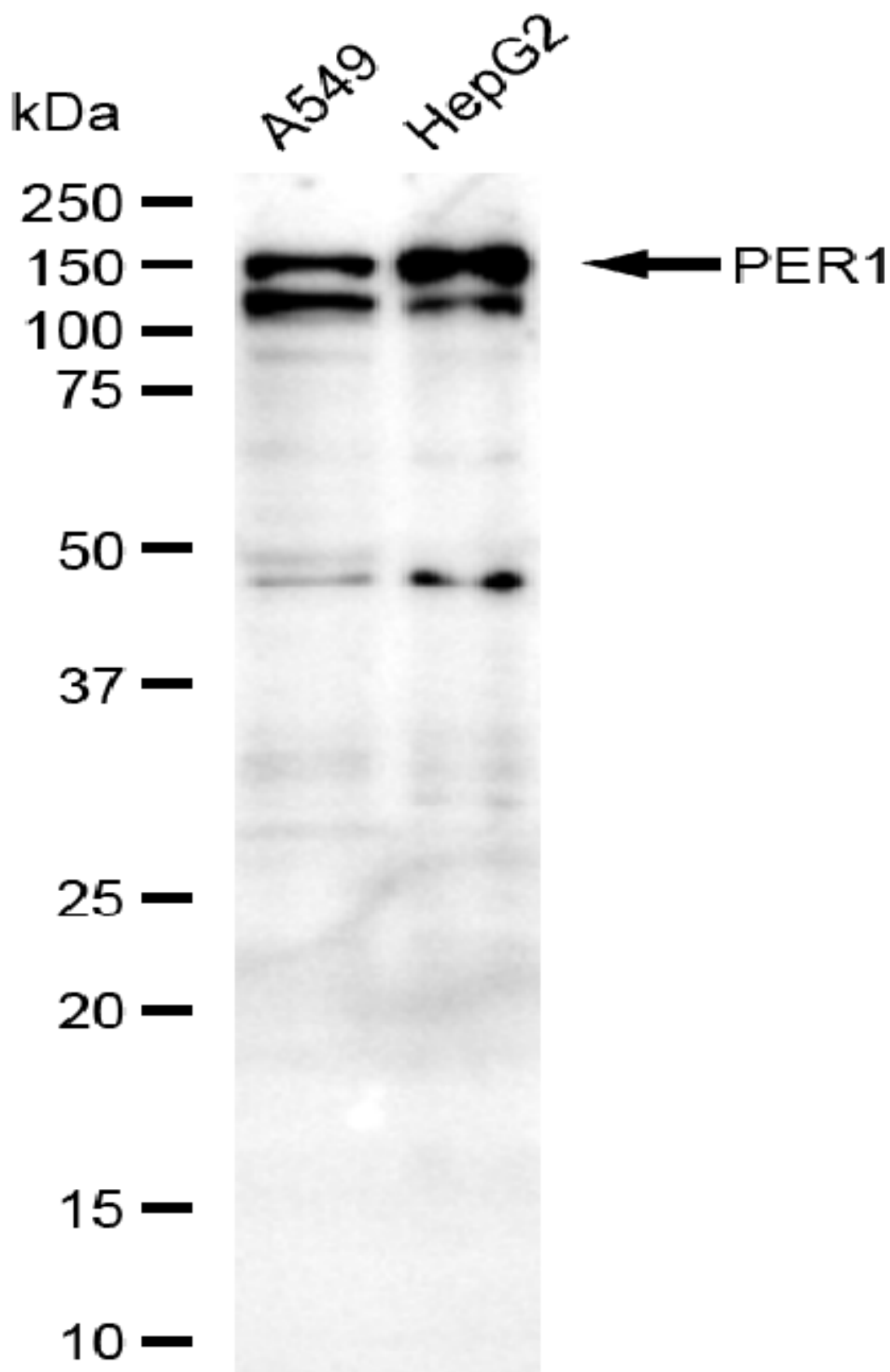
SUPPORT

SUPPORT@GENUINBIOTECH.COM
TEL: +1-540-855-7041

ORDERS

SALES@GENUINBIOTECH.COM
FAX: +1-540-855-7041

WWW.GENUINBIOTECH.COM



Copyright ©2025 Genuin Biotechnologies LLC

SUPPORT

SUPPORT@GENUINBIOTECH.COM
TEL: +1-540-855-7041

ORDERS

SALES@GENUINBIOTECH.COM
FAX: +1-540-855-7041

WWW.GENUINBIOTECH.COM

Western blotting analysis using anti-PER1 antibody (Cat#52552). Total lysates (30 µg) were loaded and separated by SDS-PAGE. The blot was incubated with anti-PER1 antibody (Cat#52552, 1:2,500) and HRP-conjugated goat anti-rabbit secondary antibody (Cat#201, 1:20,000) respectively. Image was developed using FeQ™ ECL Substrate Kit (Cat#226).