

## Catalog #: 52581

### Aliases

GLS2; Glutaminase 2; GLS; GA; HLGA; LGA; Glutaminase Liver Isoform, Mitochondrial; Glutaminase 2 (Liver, Mitochondrial); L-Glutamine Amidohydrolase; EC 3.5.1.2; Phosphate-Activated Glutaminase; Phosphate-Dependent Glutaminase; Breast Cell Glutaminase; Glutaminase I; L-Glutaminase

### Background

Gene Name: GLS2

NCBI Gene Entry: [27165](#)

UniProt Entry: [Q9UI32](#)

### Application Information

Molecular Weight: Predicted, 66 kDa; observed, 66 kDa

Clonality: Mouse monoclonal antibody

Clone ID: 25GB4210

Species Reactivity: Human, mouse

Applications Tested: Western blotting (WB), immunohistochemistry (IHC)

### Immunogen

Recombinant protein of human GLS2

### Isotype

Mouse IgG1 kappa

### Storage Buffer

Supplied in PBS (pH7.3) containing 30% glycerol, and 0.01% sodium azide.

### Storage

Store at -20 °C for one year.

### Recommended Dilutions

Western Blotting (WB): 1:500-1:1,000

Immunohistochemistry (IHC): 1:50-1:200

**Note:** This product is for research use only.

---

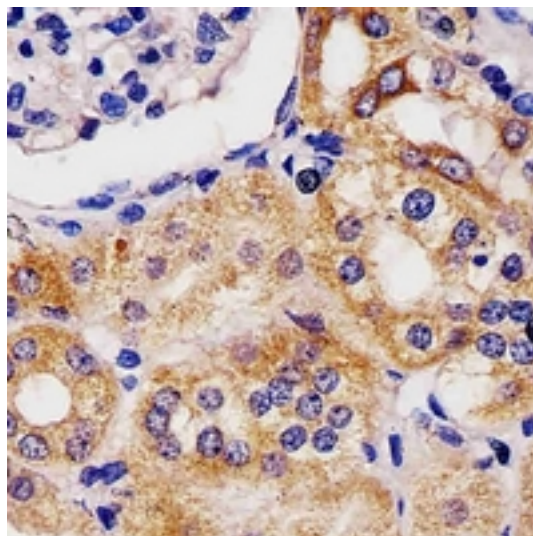
#### SUPPORT

SUPPORT@GENUINBIOTECH.COM  
TEL: +1-540-855-7041

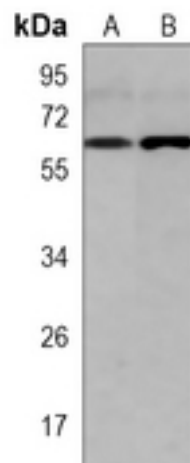
#### ORDERS

SALES@GENUINBIOTECH.COM  
FAX: +1-540-855-7041

[WWW.GENUINBIOTECH.COM](http://WWW.GENUINBIOTECH.COM)

**Validation Data**

Immunohistochemical analysis of GLS2 staining in human kidney formalin fixed paraffin embedded tissue section. The section was pre-treated using heat mediated antigen retrieval with sodium citrate buffer (pH 6.0). The section was then incubated with the antibody at room temperature and detected using an HRP conjugated compact polymer system. DAB was used as the chromogen. The section was then counterstained with haematoxylin and mounted with DPX.



Western blotting analysis of GLS2 expression in human brain (A), mouse liver (B) whole cell lysates.