

Catalog #: 52584

Aliases

PPP2R1A; Protein Phosphatase 2 Scaffold Subunit Aalpha; Serine/Threonine-Protein Phosphatase 2A 65 KDa Regulatory Subunit A Alpha Isoform; PP2A-Aalpha; PR65A; PP2AA; Protein Phosphatase 2 (Formerly 2A), Regulatory Subunit A (PR 65), Alpha Isoform; Protein Phosphatase 2A, Regulatory Subunit A, Alpha Isoform; Protein Phosphatase 2A Structural Subunit A, Alpha Isoform; Protein Phosphatase 2, Regulatory Subunit A, Alpha; Protein Phosphatase 2, 65kDa Regulatory Subunit A; Medium Tumor Antigen-Associated 61 KDa Protein; Medium Tumor Antigen-Associated 61 KDa Protein; Testicular Secretory Protein Li 1; PP2A Subunit A Isoform PR65-Alpha; PP2A Subunit A Isoform R1-Alpha; PP2AAALPHA; MRD36; PP2Aa; HJS2

Background

Gene Name: PPP2R1A

NCBI Gene Entry: [5518](#)

UniProt Entry: [P30153](#)

Application Information

Molecular Weight: Predicted, 65 kDa; observed, 65 kDa

Clonality: Rabbit polyclonal antibody

Species Reactivity: Human, mouse

Applications Tested: Western blotting (WB)

Immunogen

A synthesized peptide derived from human PPP2R1A

Isotype

Rabbit IgG

Storage Buffer

Supplied in 0.01M TBS (pH7.4) containing 50% glycerol, 1% BSA and 0.02% proclin300.

Storage

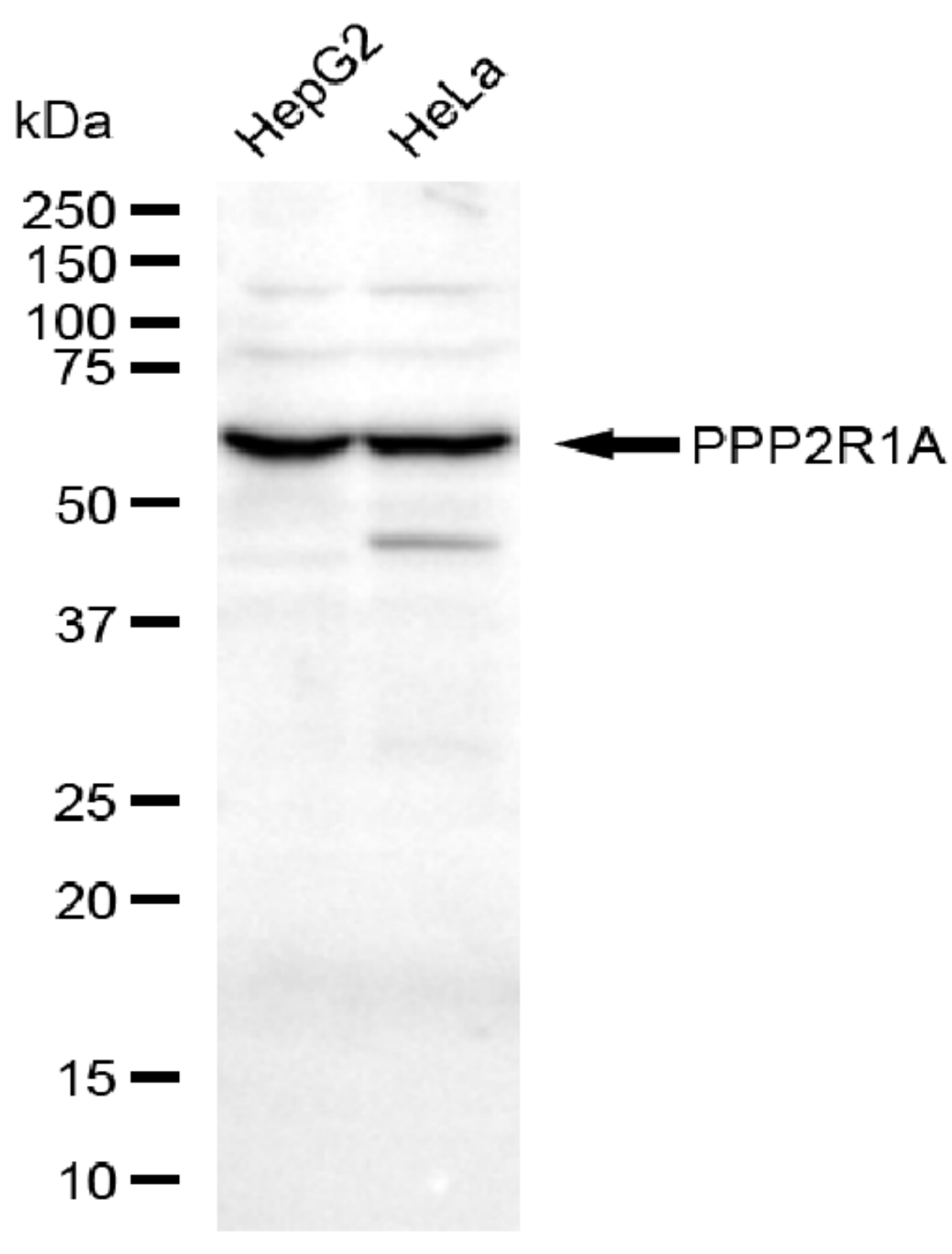
Store at -20 °C for one year.

Recommended Dilutions

Western Blotting (WB): 1:500-1:2,500

Note: This product is for research use only.

Validation Data



Copyright ©2025 Genuin Biotechnologies LLC

Western blotting analysis using anti-PPP2R1A antibody (Cat#52584). Total lysates (30 µg) were loaded and separated by SDS-PAGE. The blot was incubated with anti-PPP2R1A antibody

SUPPORT

SUPPORT@GENUINBIOTECH.COM
TEL: +1-540-855-7041

ORDERS

SALES@GENUINBIOTECH.COM
FAX: +1-540-855-7041

WWW.GENUINBIOTECH.COM

(Cat#52584, 1:2,500) and HRP-conjugated goat anti-rabbit secondary antibody (Cat#201, 1:20,000) respectively. Image was developed using FeQ™ ECL Substrate Kit (Cat#226).