

Catalog #: 52592

Aliases

SGCG; Sarcoglycan Gamma; SCARMD2; DAGA4; DMDA; A4; Sarcoglycan, Gamma (35kDa Dystrophin-Associated Glycoprotein); 35 KDa Dystrophin-Associated Glycoprotein; 35kD Dystrophin-Associated Glycoprotein; Gamma-Sarcoglycan; MGC130048; Gamma-SG; LGMD2C; 35DAG; DMDA1; SCG3; TYPE; MAM; Limb Girdle Muscular Dystrophy 2C (Duchenne-Like Muscular Dystrophy, Autosomal Recessive); Maghrebian Myopathy (Autosomal Recessive); Gamma Sarcoglycan; LGMDR5

Background

Gene Name: SGCG

NCBI Gene Entry: [6445](#)

UniProt Entry: [Q13326](#)

Application Information

Molecular Weight: Predicted, 32 kDa; observed, 32 kDa

Clonality: Rabbit polyclonal antibody

Species Reactivity: Human, mouse

Applications Tested: Western blotting (WB), immunohistochemistry (IHC)

Immunogen

A synthesized peptide derived from human SGCG

Isotype

Rabbit IgG

Storage Buffer

Supplied in PBS containing 50% glycerol, 0.5% BSA and 0.02% sodium azide.

Storage

Store at -20 °C for one year.

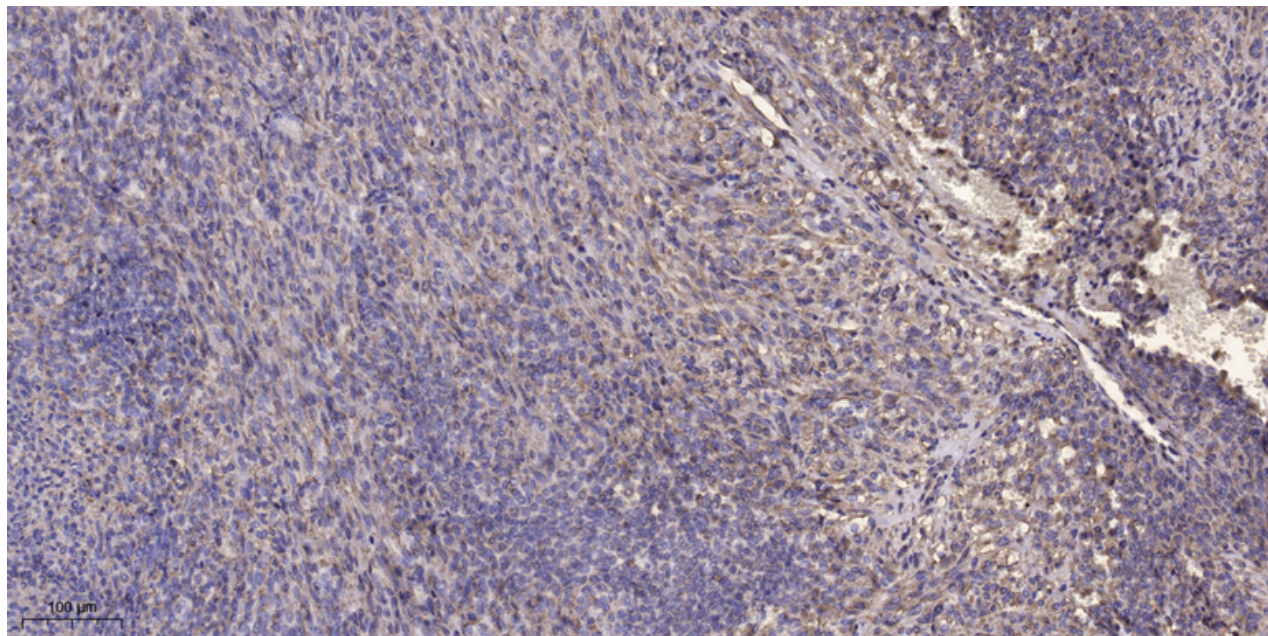
Recommended Dilutions

Western Blotting (WB): 1:500-1:2,000

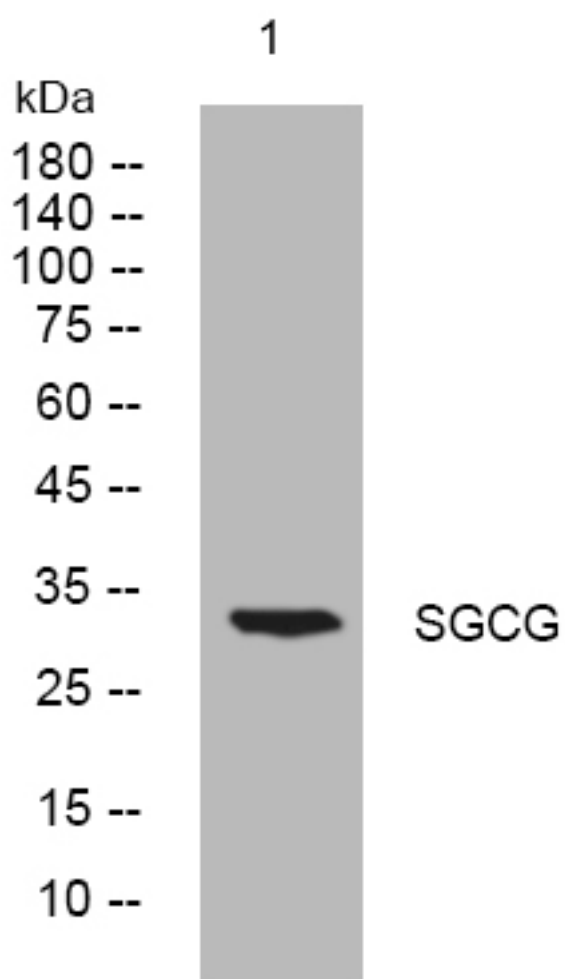
Immunohistochemistry (IHC): 1:50-1:300

Note: This product is for research use only.

Validation Data



Immunohistochemical analysis of paraffin-embedded human Colon cancer. Antibody was diluted at 1:200 (4°C overnight). Tris-EDTA, pH 9.0 was used for antigen retrieval. Secondary antibody was diluted at 1:200 (room temperature, 45min).



Western blotting analysis of lysates from K562 cells, primary antibody was diluted at 1:1,000, 4°C over night.