

Catalog #: 52593

Aliases

SGCB; Sarcoglycan Beta; A3b; SGC; Sarcoglycan, Beta (43kDa Dystrophin-Associated Glycoprotein); 43 KDa Dystrophin-Associated Glycoprotein; Beta-Sarcoglycan; Beta-SG; LGMD2E; 43DAG; Beta-Sarcoglycan(43kD Dystrophin-Associated Glycoprotein); Limb Girdle Muscular Dystrophy 2E (Non-Linked Families); LGMDR4

Background

Gene Name: SGCB

NCBI Gene Entry: [6443](#)

UniProt Entry: [Q16585](#)

Application Information

Molecular Weight: Predicted, 35 kDa; observed, 43 kDa

Clonality: Rabbit polyclonal antibody

Species Reactivity: Human, mouse

Applications Tested: Western blotting (WB), immunohistochemistry (IHC), immunocytochemistry (IC)

Immunogen

A synthesized peptide derived from human SGCB

Isotype

Rabbit IgG

Storage Buffer

Supplied in PBS containing 50% glycerol, 0.5% BSA and 0.02% sodium azide.

Storage

Store at -20 °C for one year.

Recommended Dilutions

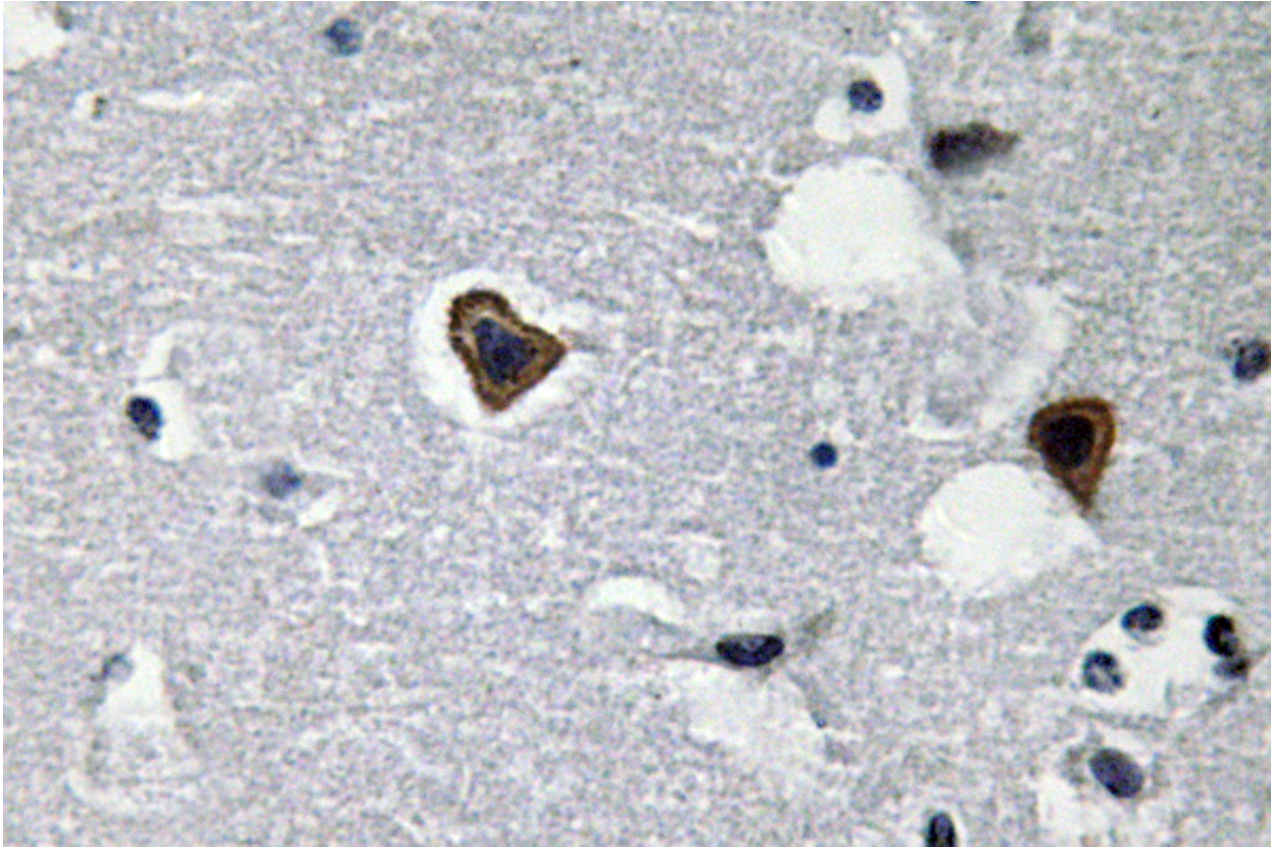
Western Blotting (WB): 1:500-1:2,000

Immunohistochemistry (IHC): 1:100-1:300

Immunocytochemistry (IC): 1:50-1:200

Note: This product is for research use only.

Validation Data



Immunohistochemistry analysis of SGCB antibody in paraffin-embedded human brain tissue.

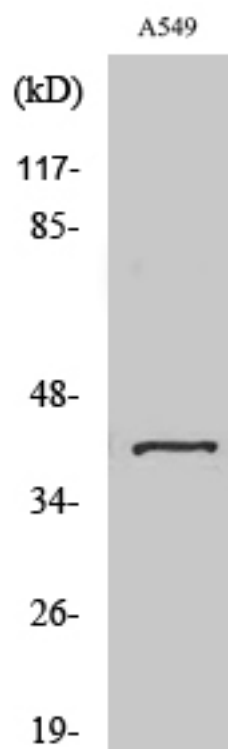
SUPPORT

SUPPORT@GENUINBIOTECH.COM
TEL: +1-540-855-7041

ORDERS

SALES@GENUINBIOTECH.COM
FAX: +1-540-855-7041

WWW.GENUINBIOTECH.COM



Western blotting analysis using anti-SGCB antibody (Cat#52593). Total cell lysates (30 μ g) from various cell lines were loaded and separated by SDS-PAGE. The blot was incubated with anti-SGCB antibody (Cat#52593, 1:2,000) and HRP-conjugated goat anti-rabbit secondary antibody respectively.