

Catalog #: 52596

Aliases

GPBAR1; G Protein-Coupled Bile Acid Receptor 1; M-BAR; BG37; TGR5; GPCR19; GPR131; G-Protein Coupled Bile Acid Receptor 1; Membrane-Type Receptor For Bile Acids; G-Protein Coupled Receptor GPCR19; MGC40597; GPCR; G-Protein Coupled Bile Acid Receptor BG37; Membrane Bile Acid Receptor; HGPCR19; HBG37

Background

Gene Name: GPBAR1

NCBI Gene Entry: [151306](#)

UniProt Entry: [Q8TDU6](#)

Application Information

Molecular Weight: Predicted, 35 kDa; observed, 35 kDa

Clonality: Rabbit polyclonal antibody

Species Reactivity: Human, mouse, rat

Applications Tested: Western blotting (WB), immunohistochemistry (IHC)

Immunogen

A synthesized peptide derived from human GPBAR1

Isotype

Rabbit IgG

Storage Buffer

Supplied in PBS containing 50% glycerol, 0.5% BSA and 0.02% sodium azide.

Storage

Store at -20 °C for one year.

Recommended Dilutions

Western Blotting (WB): 1:500-1:2,500

Immunohistochemistry (IHC): 1:50-1:300

Note: This product is for research use only.

Validation Data

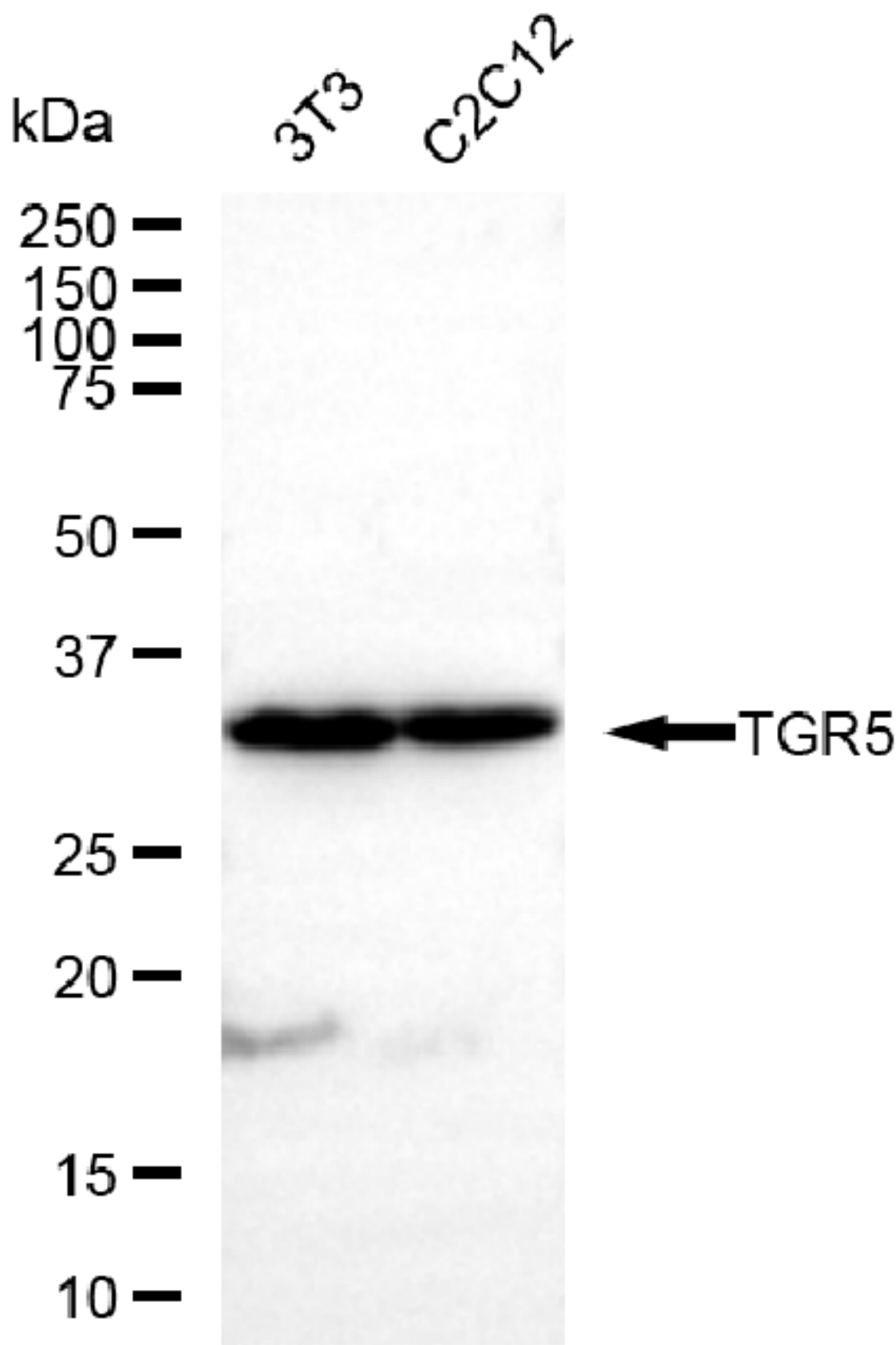
SUPPORT

SUPPORT@GENUINBIOTECH.COM
TEL: +1-540-855-7041

ORDERS

SALES@GENUINBIOTECH.COM
FAX: +1-540-855-7041

WWW.GENUINBIOTECH.COM



Copyright ©2025 Genuin Biotechnologies LLC

Western blotting analysis using anti-GPBAR1 antibody (Cat#52596). Total lysates (30 µg) were loaded and separated by SDS-PAGE. The blot was incubated with anti-GPBAR1 antibody (Cat#52596, 1:2,500) and HRP-conjugated goat anti-rabbit secondary antibody (Cat#201, 1:20,000) respectively. Image was developed using FeQ™ ECL Substrate Kit (Cat#226).