

Catalog #: 52597

Aliases

SLC11A2; Solute Carrier Family 11 Member 2 ; DMT-1; DCT1; DMT1; Natural Resistance-Associated Macrophage Protein 2; Divalent Cation Transporter 1; NRAMP2; Solute Carrier Family 11 (Proton-Coupled Divalent Metal Ion Transporter), Member 2; Divalent Metal Transporter 1; FLJ37416; NRAMP 2; Solute Carrier Family 11 (Proton-Coupled Divalent Metal Ion Transporters), Member 2; AHMIO1

Background

Gene Name: SLC11A2

NCBI Gene Entry: [4891](#)

UniProt Entry: [P49281](#)

Application Information

Molecular Weight: Predicted, 60 kDa, observed, 60 kDa

Clonality: Rabbit polyclonal antibody

Species Reactivity: Human, mouse, rat

Applications Tested: Western blotting (WB)

Immunogen

A synthesized peptide derived from human SLC11A2

Isotype

Rabbit IgG

Storage Buffer

Supplied in PBS containing 50% glycerol, 0.5% BSA and 0.02% sodium azide.

Storage

Store at -20 °C for one year.

Recommended Dilutions

Western Blotting (WB): 1:500-1:2,000

Note: This product is for research use only.

Validation Data

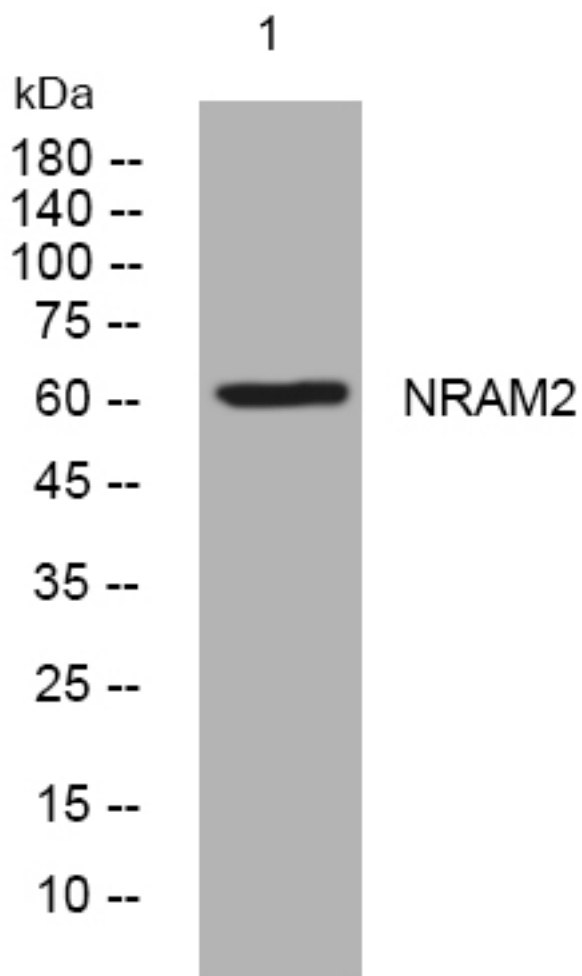
SUPPORT

SUPPORT@GENUINBIOTECH.COM
TEL: +1-540-855-7041

ORDERS

SALES@GENUINBIOTECH.COM
FAX: +1-540-855-7041

WWW.GENUINBIOTECH.COM



Western blotting analysis of lysates from A431 cells, primary antibody was diluted at 1:1000, 4°over night

SUPPORT

SUPPORT@GENUINBIOTECH.COM
TEL: +1-540-855-7041

ORDERS

SALES@GENUINBIOTECH.COM
FAX: +1-540-855-7041

WWW.GENUINBIOTECH.COM