

Catalog #: 52598

Aliases

IL17A; Interleukin 17A; IL-17A; IL-17; CTLA8; IL17; Interleukin 17 (Cytotoxic T-Lymphocyte-Associated Serine Esterase 8); Cytotoxic T-Lymphocyte-Associated Protein 8; Cytotoxic T-Lymphocyte-Associated Antigen 8; Interleukin-17A; CTLA-8; Interleukin-17; ILA17

Background

Gene Name: IL17

NCBI Gene Entry: [3605](#)

UniProt Entry: [Q16552](#)

Application Information

Molecular Weight: Predicted, 17 kDa, observed, 17 kDa

Clonality: Rabbit polyclonal antibody

Species Reactivity: Human, mouse, rat

Applications Tested: Western blotting (WB), flow cytometry (FCM)

Immunogen

A synthesized peptide derived from human IL17

Isotype

Rabbit IgG

Storage Buffer

Supplied in PBS containing 50% glycerol, 0.5% BSA and 0.02% sodium azide.

Storage

Store at -20 °C for one year.

Recommended Dilutions

Western Blotting (WB): 1:500-1:2,000

Flow Cytometry (FCM) : 1:50-1:200

Note: This product is for research use only.

Validation Data

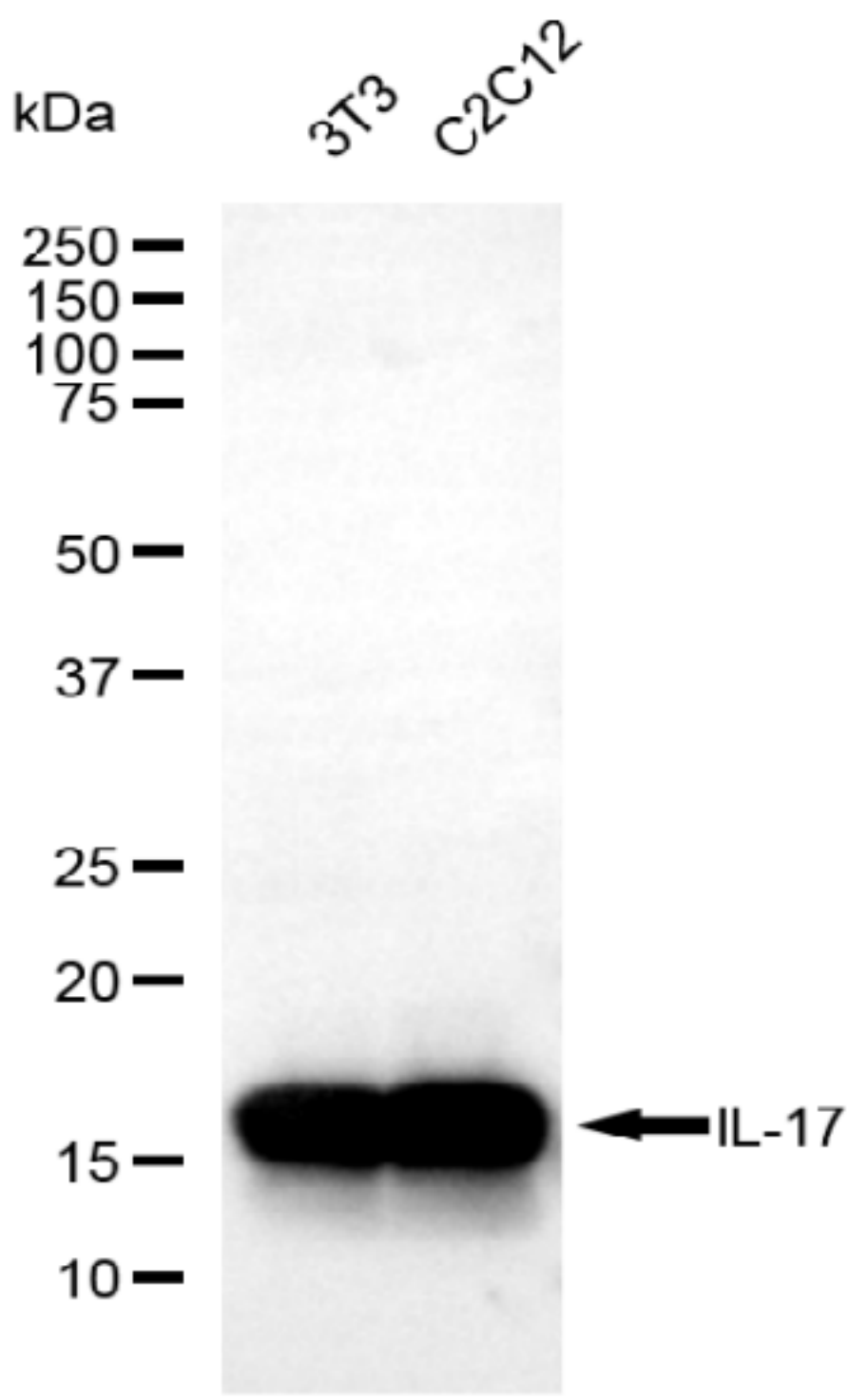
SUPPORT

SUPPORT@GENUINBIOTECH.COM
TEL: +1-540-855-7041

ORDERS

SALES@GENUINBIOTECH.COM
FAX: +1-540-855-7041

WWW.GENUINBIOTECH.COM



Copyright ©2025 Genuin Biotechnologies LLC

Western blotting analysis using anti-IL-17 antibody (Cat#52598). Total lysates (30 µg) were loaded and separated by SDS-PAGE. The blot was incubated with anti-IL-17 antibody (Cat#52598, 1:2,500) and HRP-conjugated goat anti-rabbit secondary antibody (Cat#201, 1:20,000) respectively. Image was developed using FeQ™ ECL Substrate Kit (Cat#226).

SUPPORT

SUPPORT@GENUINBIOTECH.COM
TEL: +1-540-855-7041

ORDERS

SALES@GENUINBIOTECH.COM
FAX: +1-540-855-7041

WWW.GENUINBIOTECH.COM