

Catalog #: 52600

Aliases

MLXIP; MLX Interacting Protein; BHLHe36; MONDOA; MIR; KIAA0867; Class E Basic Helix-Loop-Helix Protein 36; Transcriptional Activator MondoA; MLX-Interacting Protein; Mlx Interactor; BHLHE36

Background

Gene Name: MLXIP

NCBI Gene Entry: [22877](#)

UniProt Entry: [Q9HAP2](#)

Application Information

Molecular Weight: Predicted, 101 kDa, observed, 101 kDa

Clonality: Rabbit polyclonal antibody

Species Reactivity: Human, mouse

Applications Tested: Western blotting (WB)

Immunogen

A synthesized peptide derived from human MLXIP

Isotype

Rabbit IgG

Storage Buffer

Supplied in PBS containing 50% glycerol, 0.5% BSA and 0.02% sodium azide.

Storage

Store at -20 °C for one year.

Recommended Dilutions

Western Blotting (WB): 1:500-1:2,000

Note: This product is for research use only.

Validation Data

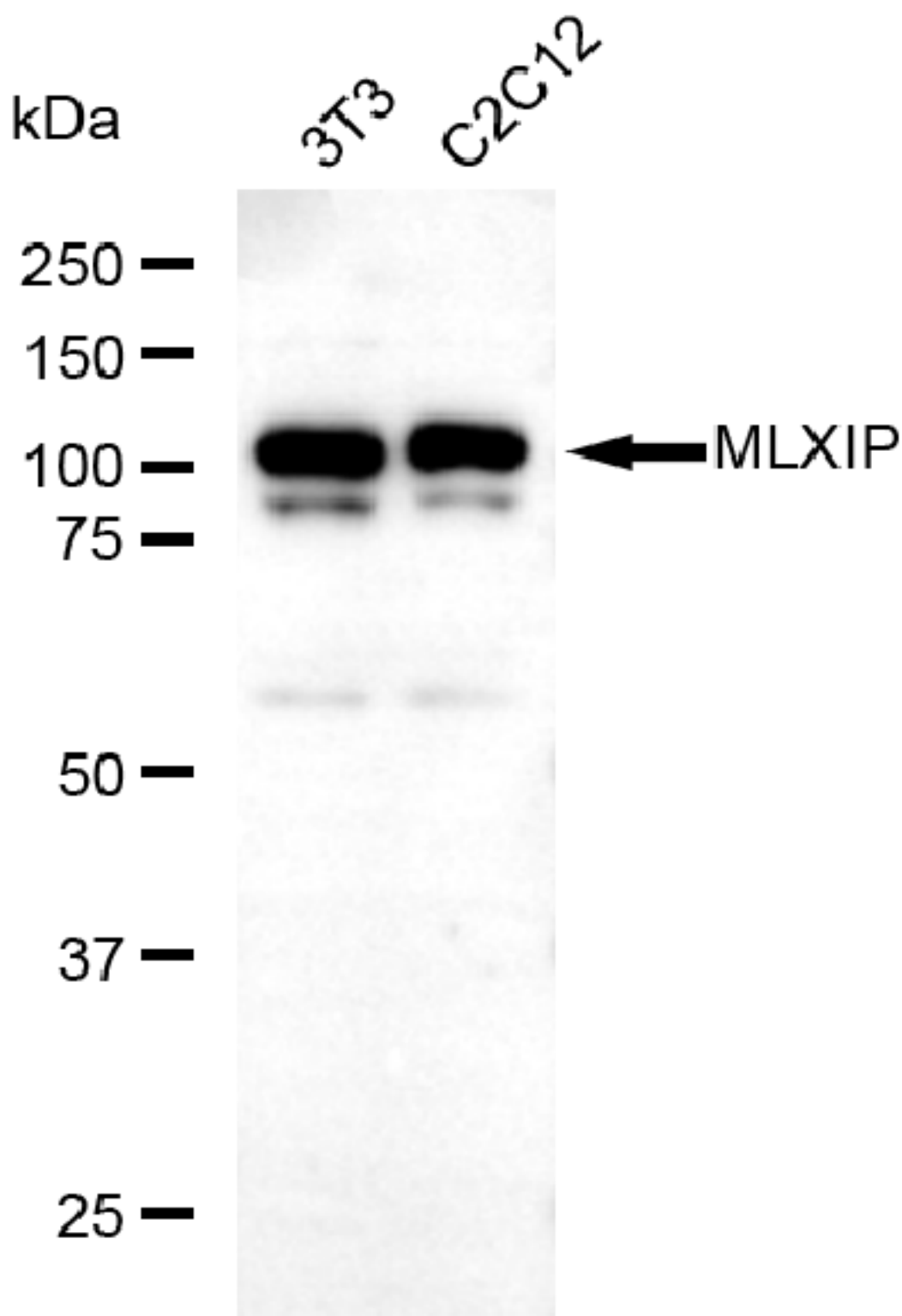
SUPPORT

SUPPORT@GENUINBIOTECH.COM
TEL: +1-540-855-7041

ORDERS

SALES@GENUINBIOTECH.COM
FAX: +1-540-855-7041

WWW.GENUINBIOTECH.COM



Copyright ©2025 Genuin Biotechnologies LLC

Western blotting analysis using anti-MLXIP antibody (Cat#52600). Total lysates (30 μ g) were loaded and separated by SDS-PAGE. The blot was incubated with anti-MLXIP antibody (Cat#52600, 1:2,500) and HRP-conjugated goat anti-rabbit secondary antibody (Cat#201, 1:20,000) respectively. Image was developed using FeQ™ ECL Substrate Kit (Cat#226).

SUPPORT

SUPPORT@GENUINBIOTECH.COM
TEL: +1-540-855-7041

ORDERS

SALES@GENUINBIOTECH.COM
FAX: +1-540-855-7041

WWW.GENUINBIOTECH.COM