

Catalog #: 52606

Aliases

KRT8; Keratin 8; CK-8; CYK8; K8; CARD2; K2C8; CK8; KO; Keratin, Type II Cytoskeletal 8; Type-II Keratin Kb8; Keratin 8, Type II; Cytokeratin-8; Keratin-8

Background

Gene Name: KRT8

NCBI Gene Entry: [3856](#)

UniProt Entry: [P05787](#)

Application Information

Molecular Weight: Predicted, 54 kDa, observed, 54 kDa

Clonality: Mouse monoclonal antibody

Clone ID: 25GB4825

Species Reactivity: Human, mouse, rat

Applications Tested: Western blotting (WB), immunohistochemistry(IHC), immunocytochemistry (IC)

Immunogen

A synthesized peptide derived from human KRT8

Isotype

Mouse IgG2a Kappa

Storage Buffer

Supplied in PBS containing 50% glycerol, 0.5% BSA and 0.04% sodium azide.

Storage

Store at -20 °C for one year.

Recommended Dilutions

Western Blotting (WB): 1:500-1:2,000

Immunohistochemistry(IHC): 1:200-1:1,000

Immunocytochemistry (IC): 1:100-1:500

Note: This product is for research use only.

SUPPORT

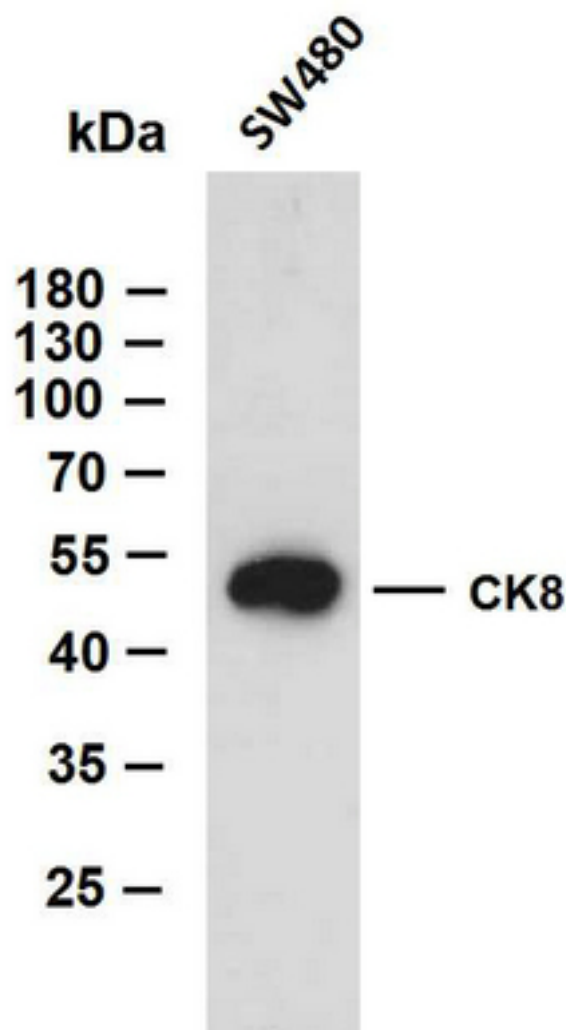
SUPPORT@GENUINBIOTECH.COM
TEL: +1-540-855-7041

ORDERS

SALES@GENUINBIOTECH.COM
FAX: +1-540-855-7041

WWW.GENUINBIOTECH.COM

Validation Data



SW480 whole cell lysates were separated by 10% SDS-PAGE, and the membrane was blotted with anti-CK8(ABT535) antibody. The HRP-conjugated Goat anti-Mouse IgG(H + L) antibody was used to detect the antibody. Lane 1: SW480