

# Anti-GNAI2 Recombinant Rabbit Monoclonal Antibody



**Catalog #: 5261**

## Aliases

GNAI2; G Protein Subunit Alpha I2; Guanine Nucleotide-Binding Protein G(I) Subunit Alpha-2; GNAI2B; GIP; Guanine Nucleotide Binding Protein (G Protein), Alpha Inhibiting Activity Polypeptide 2; GTP-Binding Regulatory Protein Gi Alpha-2 Chain; Adenylate Cyclase-Inhibiting G Alpha Protein; Guanine Nucleotide-Binding Protein G(I), Alpha-2 Subunit; Heterotrimeric Guanine Nucleotide-Binding Protein 1C; H\_LUCA15.1; H\_LUCA16.1; HG1C

## Background

Gene Name: GNAI2

NCBI Gene Entry: [2771](#)

UniProt Entry: [P04899](#)

## Application Information

Molecular Weight: Predicted, 40 kDa; observed, 36 kDa

Clonality: Rabbit monoclonal antibody

Clone ID: 25GB410

Species Reactivity: Human, mouse, rat

Applications Tested: Western blotting (WB)

## Immunogen

A synthesized peptide derived from human GNAI2

## Isotype

Rabbit IgG

## Storage Buffer

Supplied in PBS (pH 7.4) containing 50% glycerol, and 0.02% sodium azide.

## Storage

Store at -20 °C for one year.

## Recommended Dilutions

Western Blotting (WB): 1:1,000-1:5,000

**Note:** This product is for research use only.

---

### SUPPORT

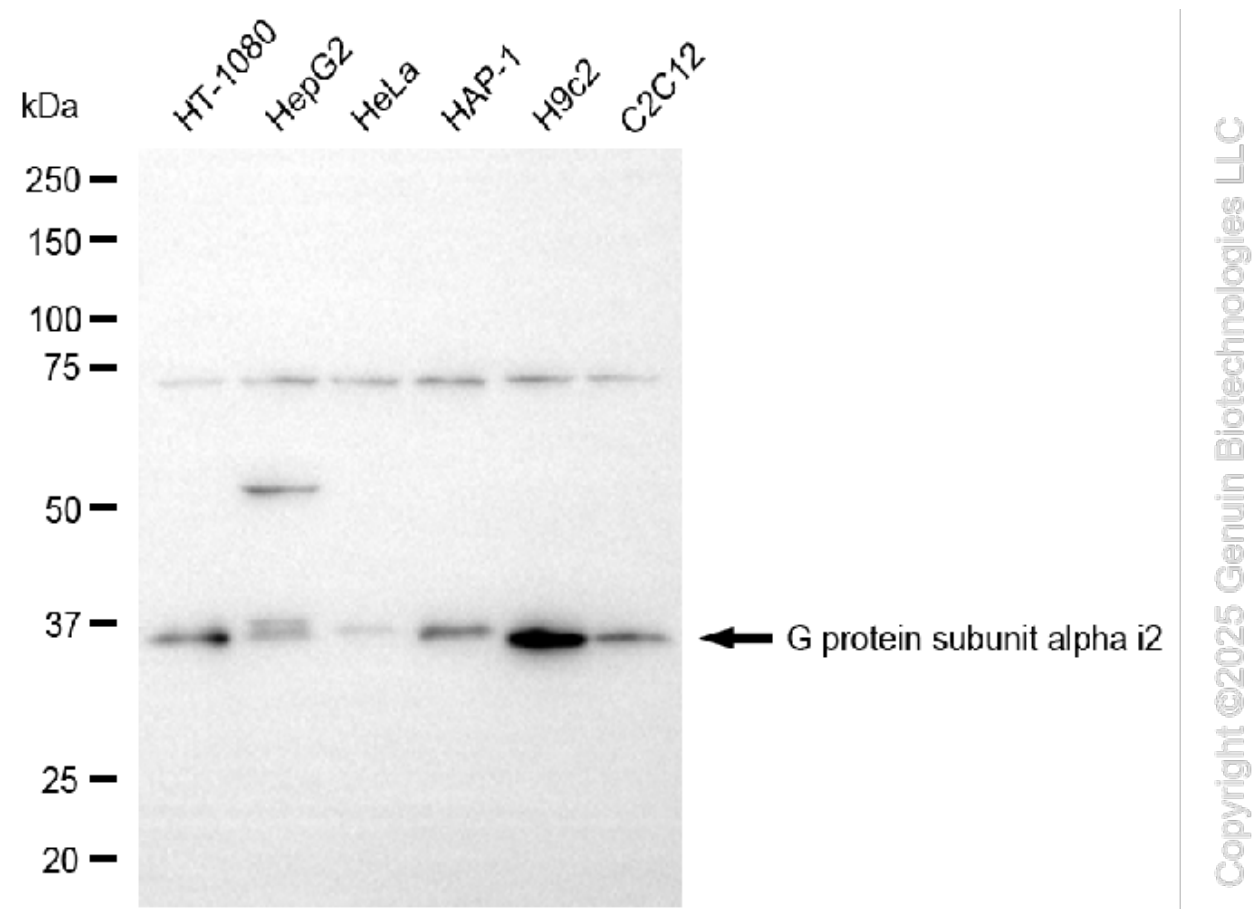
SUPPORT@GENUINBIOTECH.COM  
TEL: +1-540-855-7041

### ORDERS

SALES@GENUINBIOTECH.COM  
FAX: +1-540-855-7041

[WWW.GENUINBIOTECH.COM](http://WWW.GENUINBIOTECH.COM)

## Validation Data



Western blotting analysis using anti-G protein subunit alpha i2 antibody (Cat#5261). Total cell lysates (30  $\mu$ g) from various cell lines were loaded and separated by SDS-PAGE. The blot was incubated with anti-G protein subunit alpha i2 antibody (Cat#5261, 1:5,000) and HRP-conjugated goat anti-rabbit secondary antibody (Cat#201, 1:20,000) respectively. Image was developed using NaQ™ ECL Substrate Kit (Cat#716).