

## Catalog #: 52611

### Aliases

ANO6; Anoctamin 6; Transmembrane Protein 16F; TMEM16F; Small-Conductance Calcium-Activated Nonselective Cation Channel; DKFZp313M0720; SCAN Channel; Anoctamin-6; BDPLT7; SCTS

### Background

Gene Name: ANO6

NCBI Gene Entry: [196527](#)

UniProt Entry: [Q4KMQ2](#)

### Application Information

Molecular Weight: Predicted, 106 kDa; observed, 100 kDa

Clonality: Rabbit polyclonal antibody

Species Reactivity: Human, mouse

Applications Tested: Western blotting (WB)

### Immunogen

A synthesized peptide derived from human ANO6

### Isotype

Rabbit IgG

### Storage Buffer

Supplied in PBS containing 50% glycerol, 0.5% BSA and 0.02% sodium azide.

### Storage

Store at -20 °C for one year.

### Recommended Dilutions

Western Blotting (WB): 1:500-1:2,000

**Note:** This product is for research use only.

### Validation Data

---

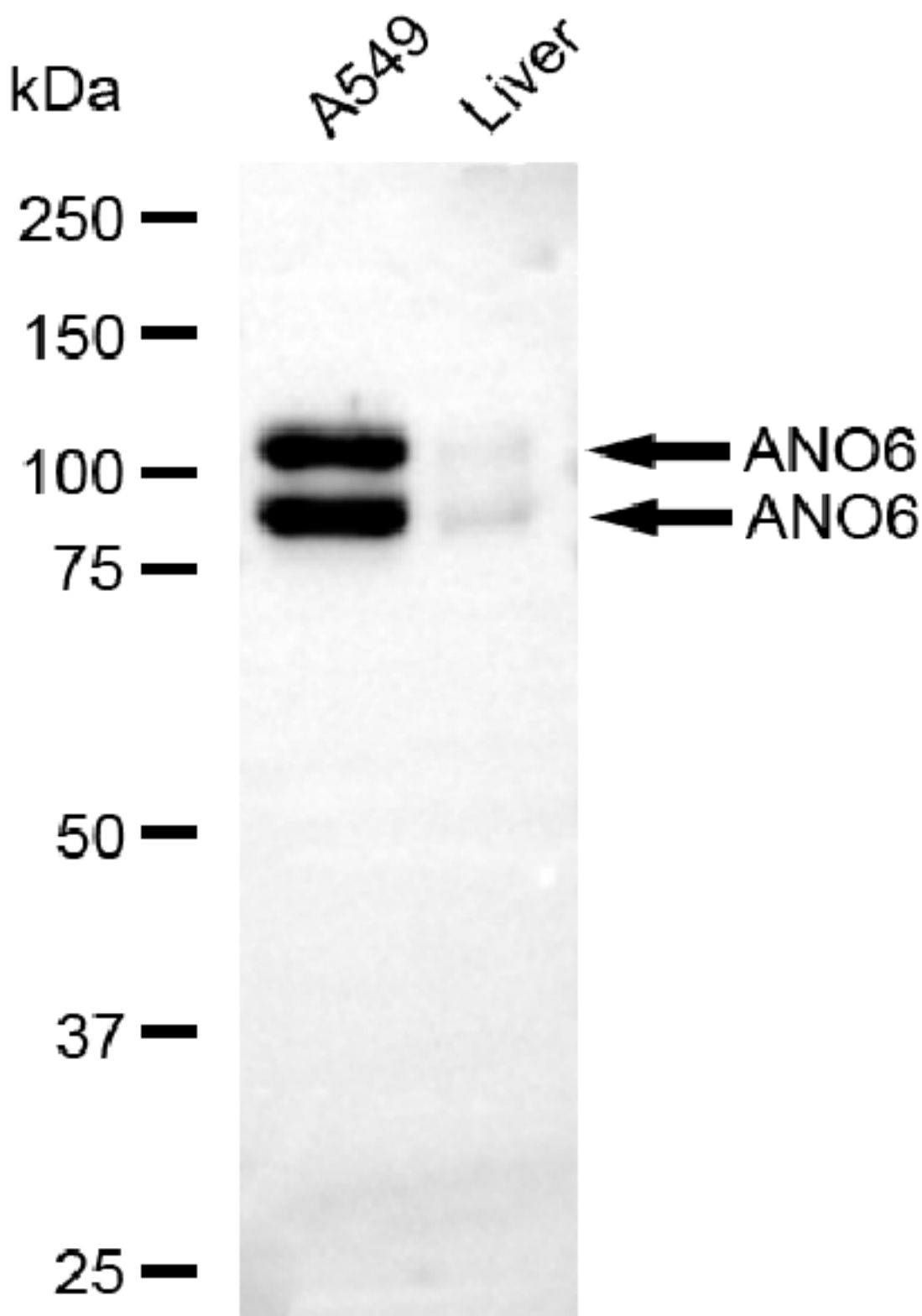
#### SUPPORT

SUPPORT@GENUINBIOTECH.COM  
TEL: +1-540-855-7041

#### ORDERS

SALES@GENUINBIOTECH.COM  
FAX: +1-540-855-7041

[WWW.GENUINBIOTECH.COM](http://WWW.GENUINBIOTECH.COM)



Copyright ©2025 Genuin Biotechnologies LLC

Western blotting analysis using anti-ANO6 antibody (Cat#52611). Total lysates (30 µg) were loaded and separated by SDS-PAGE. The blot was incubated with anti-ANO6 antibody (Cat#52611, 1:2,500) and HRP-conjugated goat anti-rabbit secondary antibody (Cat#201,

**SUPPORT**

SUPPORT@GENUINBIOTECH.COM  
TEL: +1-540-855-7041

**ORDERS**

SALES@GENUINBIOTECH.COM  
FAX: +1-540-855-7041

**WWW.GENUINBIOTECH.COM**

1:20,000) respectively. Image was developed using FeQ™ ECL Substrate Kit (Cat#226).