

Catalog #: 52617

Aliases

TET3; Tet Methylcytosine Dioxygenase 3; HCG_40738; Methylcytosine Dioxygenase TET3; Tet Oncogene Family Member 3; Ten-Eleven Translocation 3; MGC22014; Probable Methylcytosine Dioxygenase TET3; Putative Methylcytosine Dioxygenase; EC 1.14.11.80; EC 1.14.11.N2; KIAA0401; BEFAHRS

Background

Gene Name: TET3

NCBI Gene Entry: [200424](#)

UniProt Entry: [O43151](#)

Application Information

Molecular Weight: Predicted, 194 kDa

Clonality: Rabbit polyclonal antibody

Species Reactivity: Human, mouse, rat

Applications Tested: Western blotting (WB)

Immunogen

A synthesized peptide derived from human TET3

Isotype

Rabbit IgG

Storage Buffer

Supplied in PBS containing 50% glycerol, 0.5% BSA and 0.02% sodium azide.

Storage

Store at -20 °C for one year.

Recommended Dilutions

Western Blotting (WB): 1:500-1:2,000

Note: This product is for research use only.

Validation Data

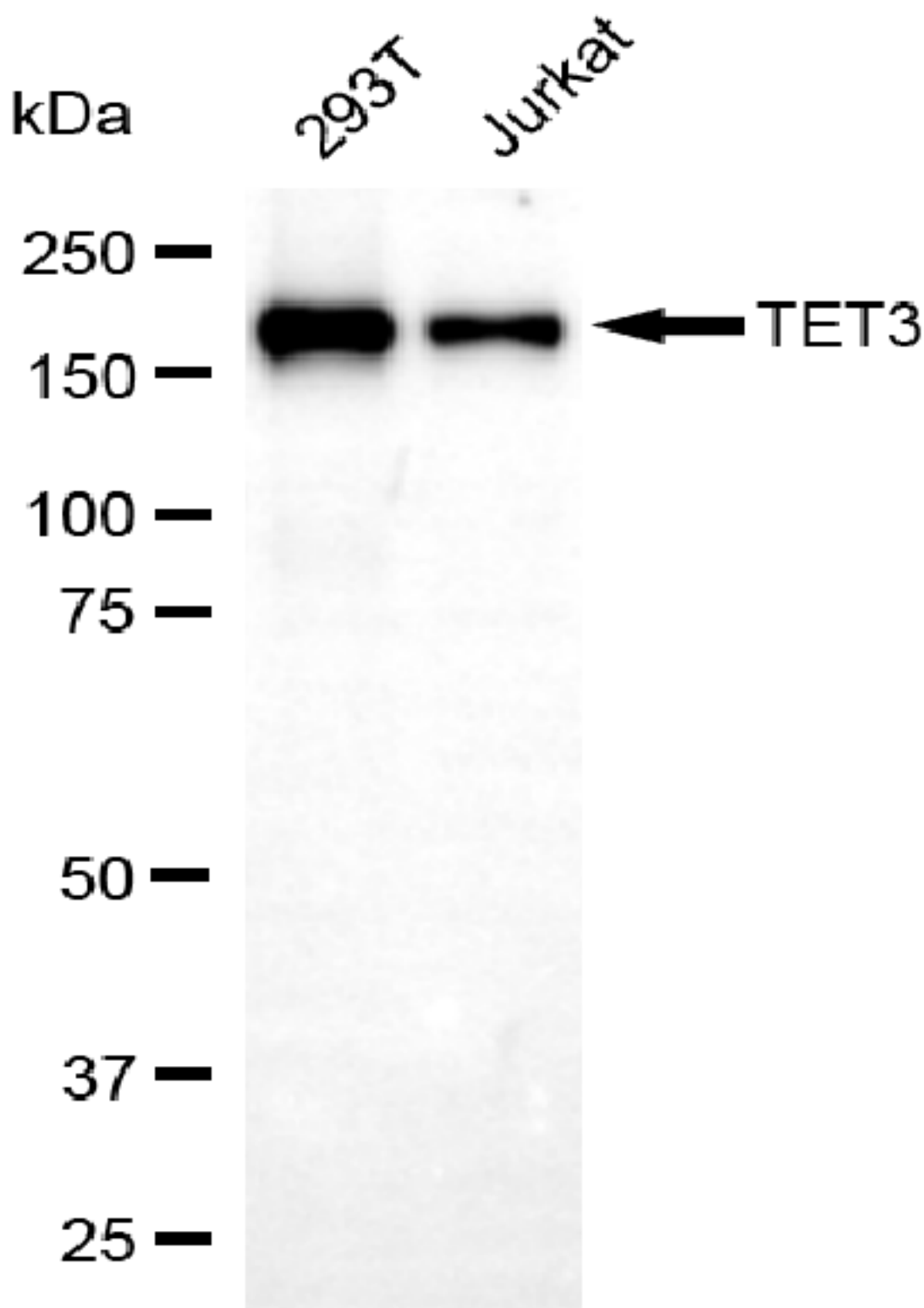
SUPPORT

SUPPORT@GENUINBIOTECH.COM
TEL: +1-540-855-7041

ORDERS

SALES@GENUINBIOTECH.COM
FAX: +1-540-855-7041

WWW.GENUINBIOTECH.COM



Copyright ©2025 Genuin Biotechnologies LLC

Western blotting analysis using anti-TET3 antibody (Cat#52617). Total lysates (30 μ g) were loaded and separated by SDS-PAGE. The blot was incubated with anti-TET3 antibody (Cat#52617, 1:2,500) and HRP-conjugated goat anti-rabbit secondary antibody (Cat#201, 1:20,000) respectively. Image was developed using FeQTM ECL Substrate Kit (Cat#226).

SUPPORT

SUPPORT@GENUINBIOTECH.COM
TEL: +1-540-855-7041

ORDERS

SALES@GENUINBIOTECH.COM
FAX: +1-540-855-7041

WWW.GENUINBIOTECH.COM

SUPPORT

SUPPORT@GENUINBIOTECH.COM
TEL: +1-540-855-7041

ORDERS

SALES@GENUINBIOTECH.COM
FAX:+1-540-855-7041

WWW.GENUINBIOTECH.COM