

## Catalog #: 52620

### Aliases

SH2D5; SH2 Domain Containing 5; SH2 Domain-Containing Protein 5

### Background

Gene Name: SH2D5

NCBI Gene Entry: [400745](#)

UniProt Entry: [Q6ZV89](#)

### Application Information

Molecular Weight: Predicted, 47 kDa; observed, 35 kDa

Clonality: Rabbit polyclonal antibody

Species Reactivity: Human, mouse, rat

Applications Tested: Western blotting (WB), immunohistochemistry (IHC)

### Immunogen

A synthesized peptide derived from human SH2D5

### Isotype

Rabbit IgG

### Storage Buffer

Supplied in PBS containing 50% glycerol, 0.5% BSA and 0.02% sodium azide.

### Storage

Store at -20 °C for one year.

### Recommended Dilutions

Western Blotting (WB): 1:500-1:2,000

Immunohistochemistry(IHC): 1:50-1:300

**Note:** This product is for research use only.

### Validation Data

---

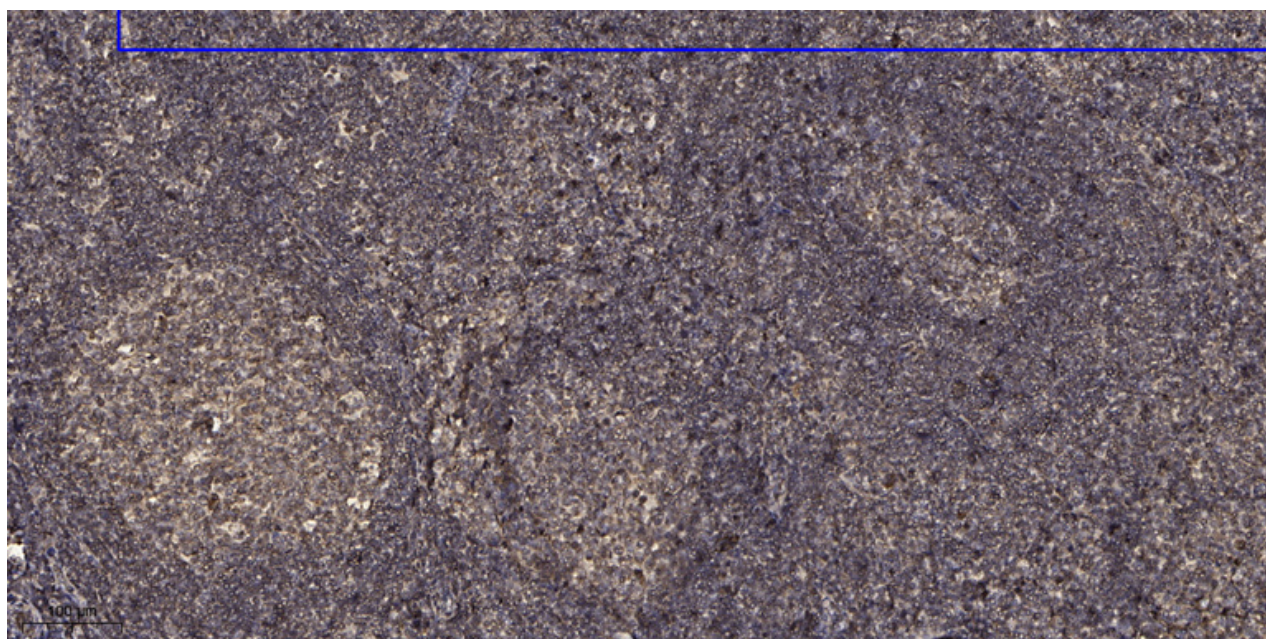
#### SUPPORT

SUPPORT@GENUINBIOTECH.COM  
TEL: +1-540-855-7041

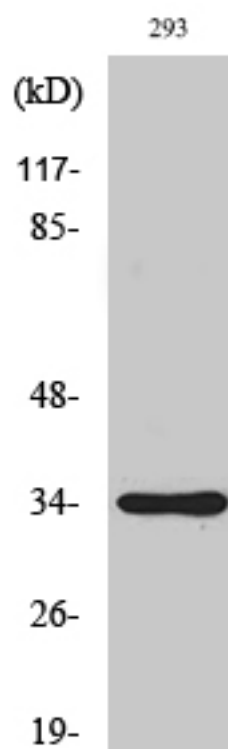
#### ORDERS

SALES@GENUINBIOTECH.COM  
FAX: +1-540-855-7041

[WWW.GENUINBIOTECH.COM](http://WWW.GENUINBIOTECH.COM)



Immunohistochemical analysis of paraffin-embedded human tonsil. Antibody was diluted at 1:200 (4°C overnight). Tris-EDTA, pH9.0 was used for antigen retrieval. Secondary antibody was diluted at 1:200 (room temperature, 45min).



Western blotting analysis using anti-SH2D5 antibody (Cat#52620). Total cell lysates from various cell lines were loaded and separated by SDS-PAGE. The blot was incubated with anti-SH2D5 antibody (Cat#52620, 1:2,000).

**SUPPORT**

SUPPORT@GENUINBIOTECH.COM  
TEL: +1-540-855-7041

**ORDERS**

SALES@GENUINBIOTECH.COM  
FAX: +1-540-855-7041

**WWW.GENUINBIOTECH.COM**

---

**SUPPORT**

SUPPORT@GENUINBIOTECH.COM  
TEL: +1-540-855-7041

**ORDERS**

SALES@GENUINBIOTECH.COM  
FAX:+1-540-855-7041

**WWW.GENUINBIOTECH.COM**