

Catalog #: 52621

Aliases

BRD1; Bromodomain Containing 1; BRPF2; BRL; Bromodomain And PHD Finger-Containing Protein 2; Bromodomain-Containing Protein 1; BR140-Like Protein; Bromodomain-Containing 1; BR140-Like; BRPF1

Background

Gene Name: BRD1

NCBI Gene Entry: [23774](#)

UniProt Entry: [O95696](#)

Application Information

Molecular Weight: Predicted, 120 kDa; observed, 116 kDa

Clonality: Rabbit polyclonal antibody

Species Reactivity: Human, mouse

Applications Tested: Western blotting (WB)

Immunogen

A synthesized peptide derived from human BRD1

Isotype

Rabbit IgG

Storage Buffer

Supplied in PBS containing 50% glycerol, 0.5% BSA and 0.02% sodium azide.

Storage

Store at -20 °C for one year.

Recommended Dilutions

Western Blotting (WB): 1:500-1:2,000

Note: This product is for research use only.

Validation Data

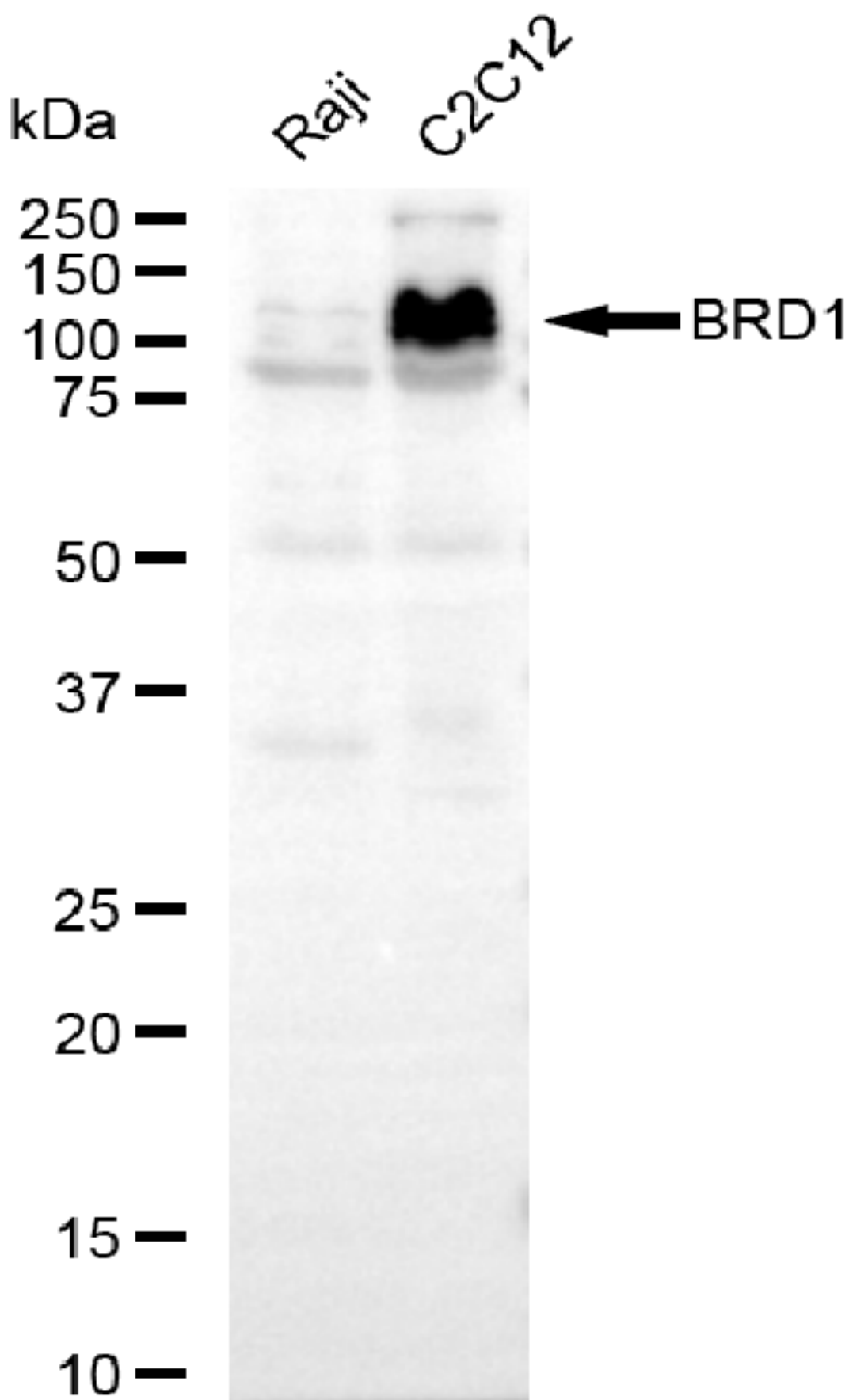
SUPPORT

SUPPORT@GENUINBIOTECH.COM
TEL: +1-540-855-7041

ORDERS

SALES@GENUINBIOTECH.COM
FAX: +1-540-855-7041

WWW.GENUINBIOTECH.COM



Copyright ©2025 Genuin Biotechnologies LLC

SUPPORT

SUPPORT@GENUINBIOTECH.COM
TEL: +1-540-855-7041

ORDERS

SALES@GENUINBIOTECH.COM
FAX: +1-540-855-7041

WWW.GENUINBIOTECH.COM

Western blotting analysis using anti-BRD1 antibody (Cat#52621). Total lysates (30 µg) were loaded and separated by SDS-PAGE. The blot was incubated with anti-BRD1 antibody (Cat#52621, 1:2,500) and HRP-conjugated goat anti-rabbit secondary antibody (Cat#201, 1:20,000) respectively. Image was developed using FeQ™ ECL Substrate Kit (Cat#226).