

## Catalog #: 52622

## Aliases

RBM10; RNA Binding Motif Protein 10; DXS8237E; GPATCH9; GPATC9; S1-1; KIAA0122; ZRANB5; Zinc Finger RANBP2-Type Containing 5; G Patch Domain-Containing Protein 9; G-Patch Domain Containing 9; RNA-Binding Protein S1-1; RNA-Binding Protein 10; MINAS-60; Epididymis Secretory Sperm Binding Protein; Ribosome Biogenesis Inhibitor MINAS-60; RNA-Binding Motif Protein 10; TARPS

## Background

Gene Name: RBM10

NCBI Gene Entry: [8241](#)

UniProt Entry: [P98175](#)

## Application Information

Molecular Weight: Predicted, 104 kDa; observed, 94,103 kDa

Clonality: Rabbit polyclonal antibody

Species Reactivity: Human, mouse, rat

Applications Tested: Western blotting (WB)

## Immunogen

A synthesized peptide derived from human RBM10

## Isotype

Rabbit IgG

## Storage Buffer

Supplied in PBS containing 50% glycerol, 0.5% BSA and 0.02% sodium azide.

## Storage

Store at -20 °C for one year.

## Recommended Dilutions

Western Blotting (WB): 1:500-1:2,500

**Note:** This product is for research use only.

## Validation Data

---

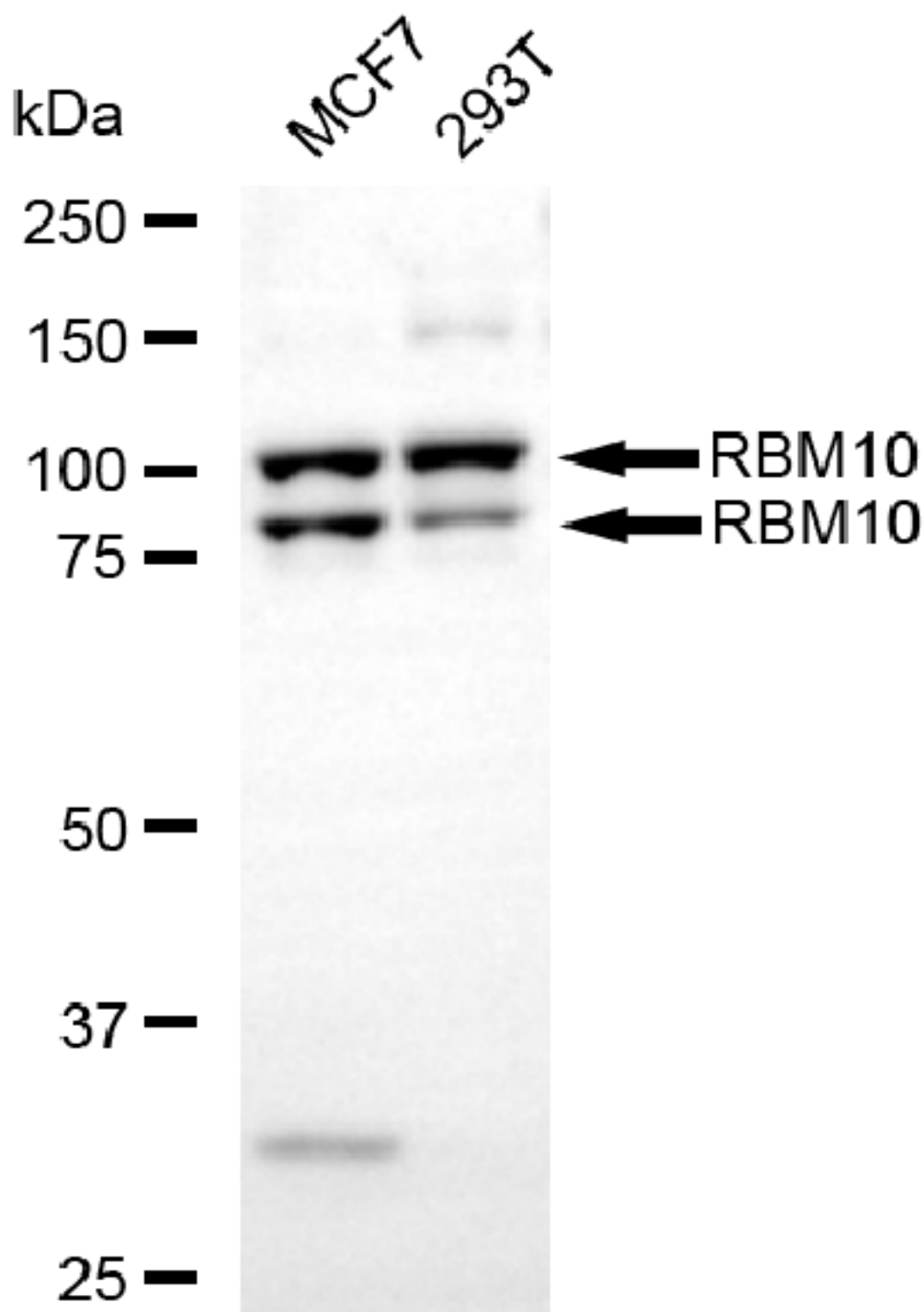
### SUPPORT

SUPPORT@GENUINBIOTECH.COM  
TEL: +1-540-855-7041

### ORDERS

SALES@GENUINBIOTECH.COM  
FAX: +1-540-855-7041

[WWW.GENUINBIOTECH.COM](http://WWW.GENUINBIOTECH.COM)



Copyright ©2025 Genuin Biotechnologies LLC

Western blotting analysis using anti-RBM10 antibody (Cat#52622). Total lysates (30  $\mu$ g) were loaded and separated by SDS-PAGE. The blot was incubated with anti-RBM10 antibody (Cat#52622, 1:2,500) and HRP-conjugated goat anti-rabbit secondary antibody (Cat#201, 1:20,000) respectively. Image was developed using FeQ™ ECL Substrate Kit (Cat#226).

**SUPPORT**

SUPPORT@GENUINBIOTECH.COM  
TEL: +1-540-855-7041

**ORDERS**

SALES@GENUINBIOTECH.COM  
FAX: +1-540-855-7041

[WWW.GENUINBIOTECH.COM](http://WWW.GENUINBIOTECH.COM)